

2017 SFEC Report

Pacific Salmon Commission
February 2017, Portland, OR
Rob Houtman
Gary S. Morishima

Duties of SFEC

1. Serve as a coastwide clearinghouse for coordination and reporting on MM and MSF programs;
2. Provide advice on potential adverse impacts of MM and MSFs on the CWT program;
3. Assess and monitor the cumulative impacts of MSFs on stocks of concern;
4. Receive and review MM and MSF proposals to identify potential issues and concerns regarding impacts on the CWT program.

SFEC is to establish a technical review process for MM/MSFs that will

- Identify potential impacts on other jurisdictions and the CWT program;
- Review procedures and protocols for marking, sampling, and evaluation;
- Establish standard formats and reporting requirements to provide post-season information and estimates of mortalities on stocks of concern;
- Identify information needs or request modifications of proposals to meet concerns regarding impacts on the CWT program; and
- Periodically assess impacts of MM/MSF programs regarding the integrity of the CWT program.

Overview

- Proposals have been received and review is underway
- MM Proposals

Species	# 2015 Mass Marked	# 2016 Mass Marked	#2017 Mass Mark Proposals
Coho	34.3 million	33.5 million	34.2 million
Chinook	117.3 million	117.1 million	116.2 million

- MSF Proposals

Species	# Proposed for 2015	# Proposed for 2016	# Proposed for 2017
Coho	25	23	23
Chinook	33	37	37
Coho & Chinook	1	1	1

MM Proposals

- All MM proposals were received within the requested timeframe,
- MM levels for Chinook remain relatively constant; slight increase for coho, slight decrease for chinook
- Change in CWT releases for both Chinook and coho
- DIT groups continue to be eliminated
- MM of Coho & Chinook releases are not all accompanied by CWT releases
 - Difficulty estimating source of MM'd encounters

MM Proposals for 2017 (excluding marked CWT'd fish)

Agency	Coho (million fish)	Chinook (million fish)
ADFG	0	0
CDFO	3.7	0
USFWS	1.7	25.0
WDFW/Tribes	22.5	70.9
ODFW/Tribes	6.2	20.3
IDFG	0	0
TOTAL	34.2	116.2

MSF Proposals

- Number of proposals similar to 2016
- Some MSFs are being conducted without proposals
- Continuing concerns regarding complex regulations and inadequate catch and CWT sampling programs for some MSFs
- ETD and Visual CWT sampling areas remain unchanged
- SFEC recommends that agencies consider the expected mark rate in a fishery when making decisions regarding implementation of MSFs

MSF Proposals for 2015-17

	Coho			Chinook		
<u>Agency</u>	<u>2015</u>	<u>2016</u>	<u>2017</u>	<u>2015</u>	<u>2016</u>	<u>2017</u>
ADFG	0	0	0	1	1	1
CDFO	6	5	5	1	1	1
WDFW	10	11	11	20	24	24
ODFW	5	5	5	6	6	6
WDFW/ODFW	2	2	2	4	5	5
IDFG	0	0	0	1	0	0
CDFG	0	0	0	0	0	0

SFEC “Stop-light” Evaluation Approach

Color	Level of concern to SFEC
#	None
#	Moderate
#	Major

- Numbers relate to specific characteristics identified in a table of the SFEC annual report
- Fill color indicates SFECs level of concern

Example: “Stoplight” Review Attributes For MSF Proposals

- 1) Fishery regulation
- 2) CWT sampling method
- 3) CWT detection method
- 4) CWT composition estimation method
- 5) Alignment of time/area strata boundaries of regulations and catch estimation and CWT sampling programs
- 6) Catch estimation by size/mark/retention status
- 7) Indicator stocks expected to be impacted by the fishery
- 8) DIT release groups expected to be impacted by the fishery

MSF Proposals Evaluation Attributes

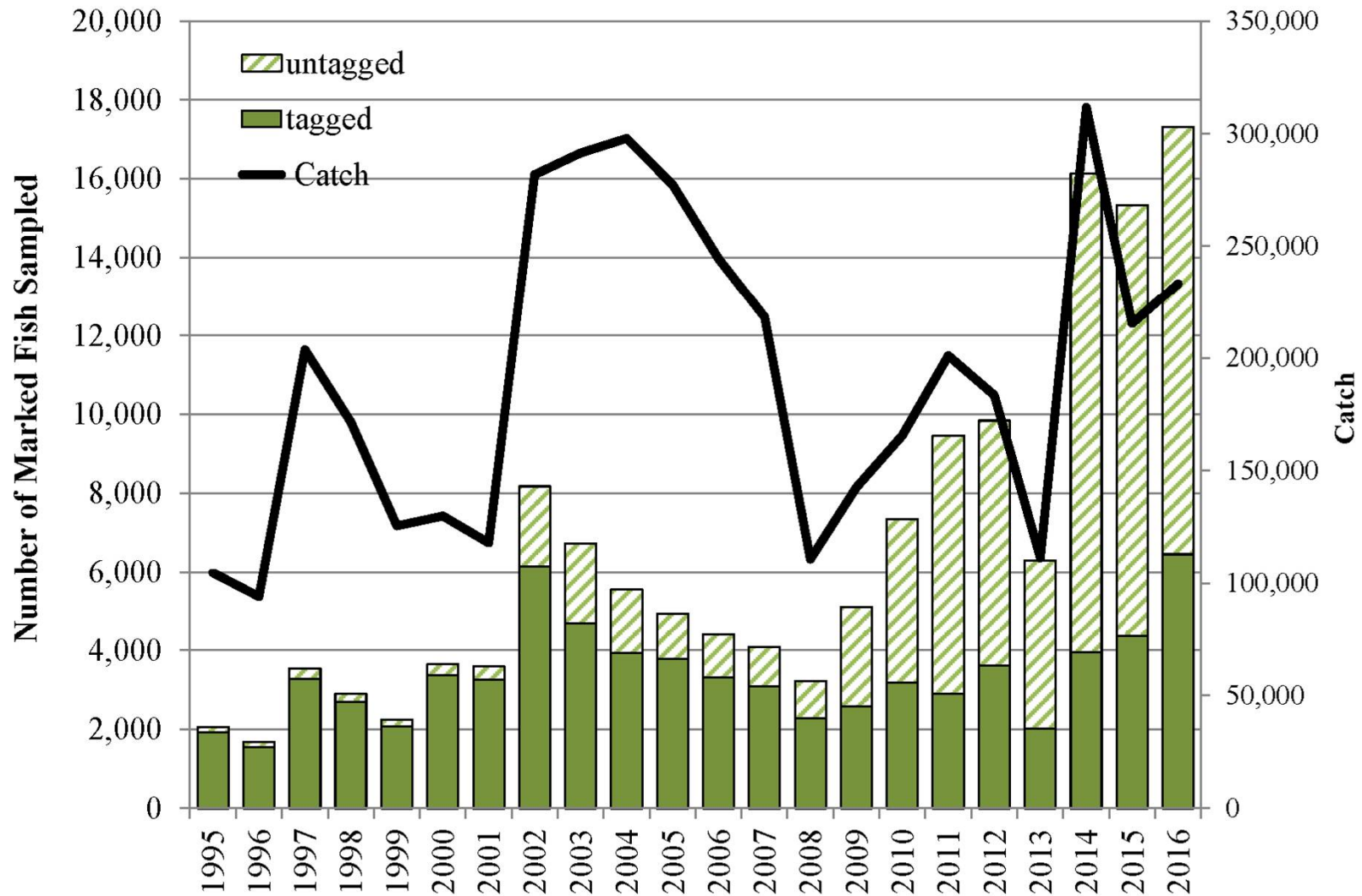
	COHO				CHINOOK			
AGENCY	# Attr	G	Y	R	# Attr	G	Y	R
ADFG	0				8	75%	25%	
FOC	47	57%	23%	19%	8	38%	38%	25%
WDFW	67	49%	16%	34%	185	80%	11%	9%
WDFW/ODFW	16	94%	6%		24	88%	13%	
ODFW	54	80%	15%	9%	46	67%	22%	11%

Example of variations in MSF Regulations

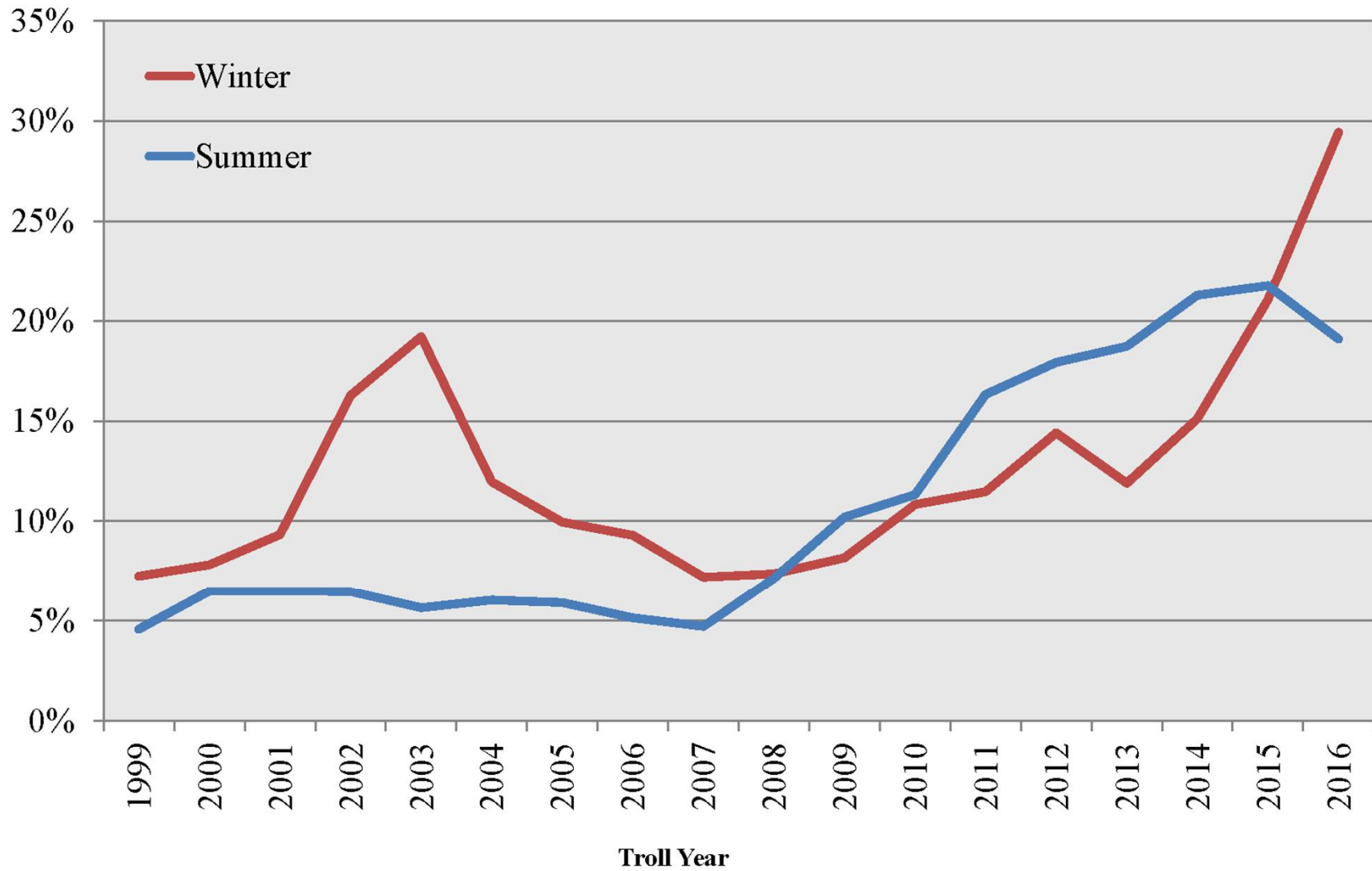
Category	Description
Simple	Only marked fish can be retained.
Marked mixed bag limit	A portion of total bag limit can be unmarked. This can be a daily limit bag or a seasonal bag limit
Mark and size-mixed bag limit	Size-range-specific allowances for retention of unmarked fish .

- Complex regulations make it more difficult to estimate MSF impacts on unmarked fish

SEAK Troll Chinook "No Pins"



SEAK Troll Chinook Ad-Clip Rate



Issues

- MSF proposals
 - required before details are known
- Post Season and detailed monitoring and reporting of MSFs, except WA Coastal and Puget Sound Marine Areas
- ADFG 2016 MSF, post season statistics provided to SFEC, indicating 459 chinook retained, but no estimates of encounters or releases. ADFG presented a report to PSC Jan 2016.

Types of Information Needed

1. MSF location, timing, regulations
2. CWT sampling method
3. CWT estimation method
4. Estimates of encounters, retentions, releases for marked and unmarked, legal, and sub/extra legal sized fish

Issues – Budget Pressures

- Concerns for maintaining base sampling programs
- Lack of DIT programs and ETD sampling.
- Dependency on CWT system – concern for erosion of cornerstone for management, stock & fishery assessments
- Support for technical and policy processes to develop agreements and to clarify responsibilities for maintaining a functional CWT program

Data-driven to Assumption-based management

- Uncertainty, risk, and precautionary approaches
 - Compensatory buffers
 - Fishing patterns (decreased reliance on mixed-stock fisheries)
- Additional funding needed to maintain stock and fishery assessment capabilities and the viability of the coastwide CWT system
- **Recommend:** Initiate multi-TC evaluation of impacts of budgetary pressures on the ability to implement PSC regimes (letter from TC Co-Chairs), specifically SFEC support for analysis of MSFs for incorporation into stock and fishery assessment methods and management models.

Future Plans

- 2017 MM/MSF reviews: target completion date Spring 2017
- MSFs
 - Focus on new or substantially changed proposals and post season reporting
- Coho DIT update – draft still in progress for PS, WC, & B C. Chinook DIT reported by CTC in exploitation rate analysis and calibration reports- differences are becoming apparent.
- Expand MSF database, e.g., NWIFC/WDFW pilot Recreational Angling Impact Database (RAID), to facilitate storage of postseason MSF estimates. Coordinate with Data Sharing and Data Standards Committees.
- Need archival/storage capability for version control of master documents