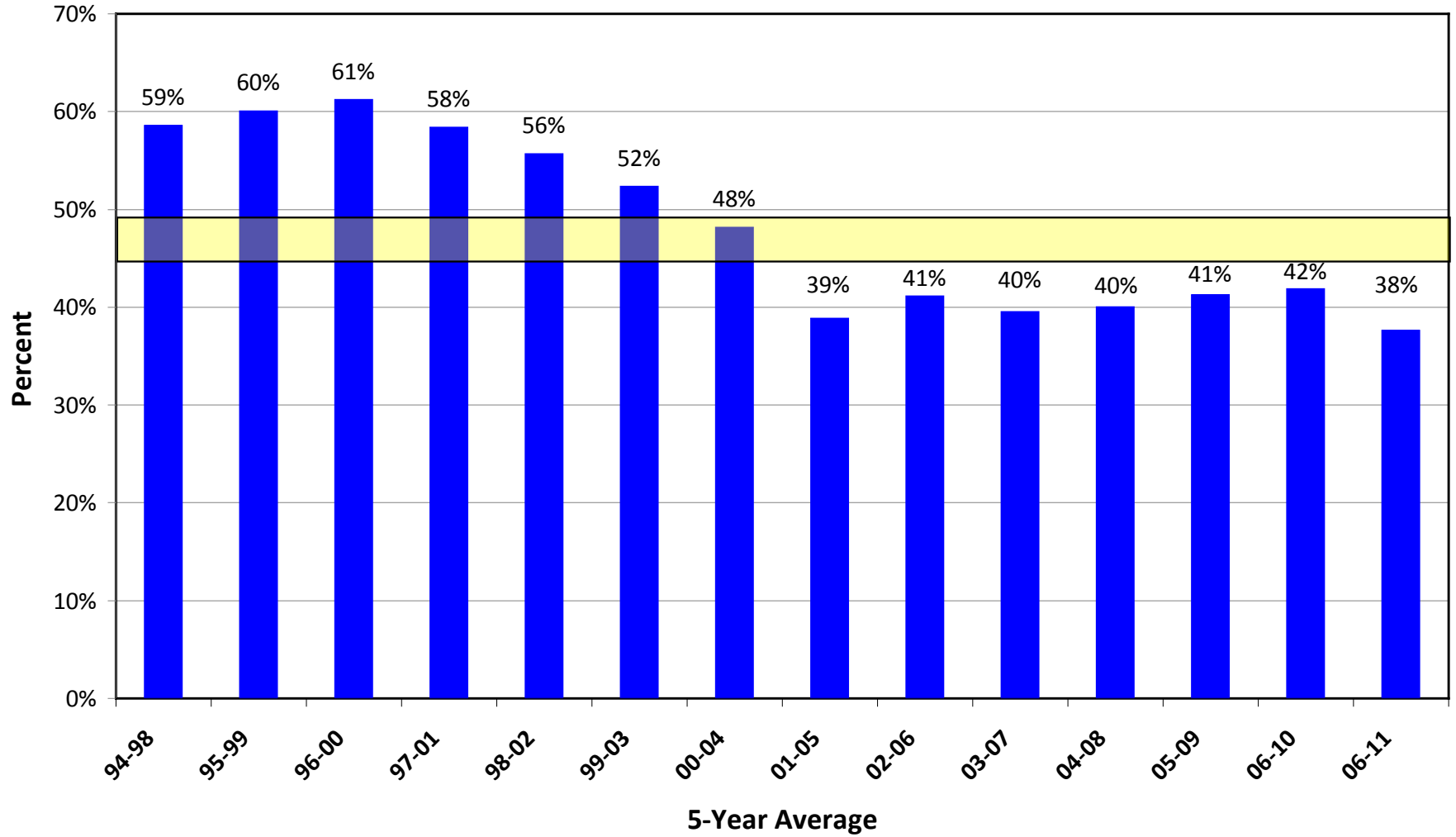


# Allocation of Enhanced Salmon

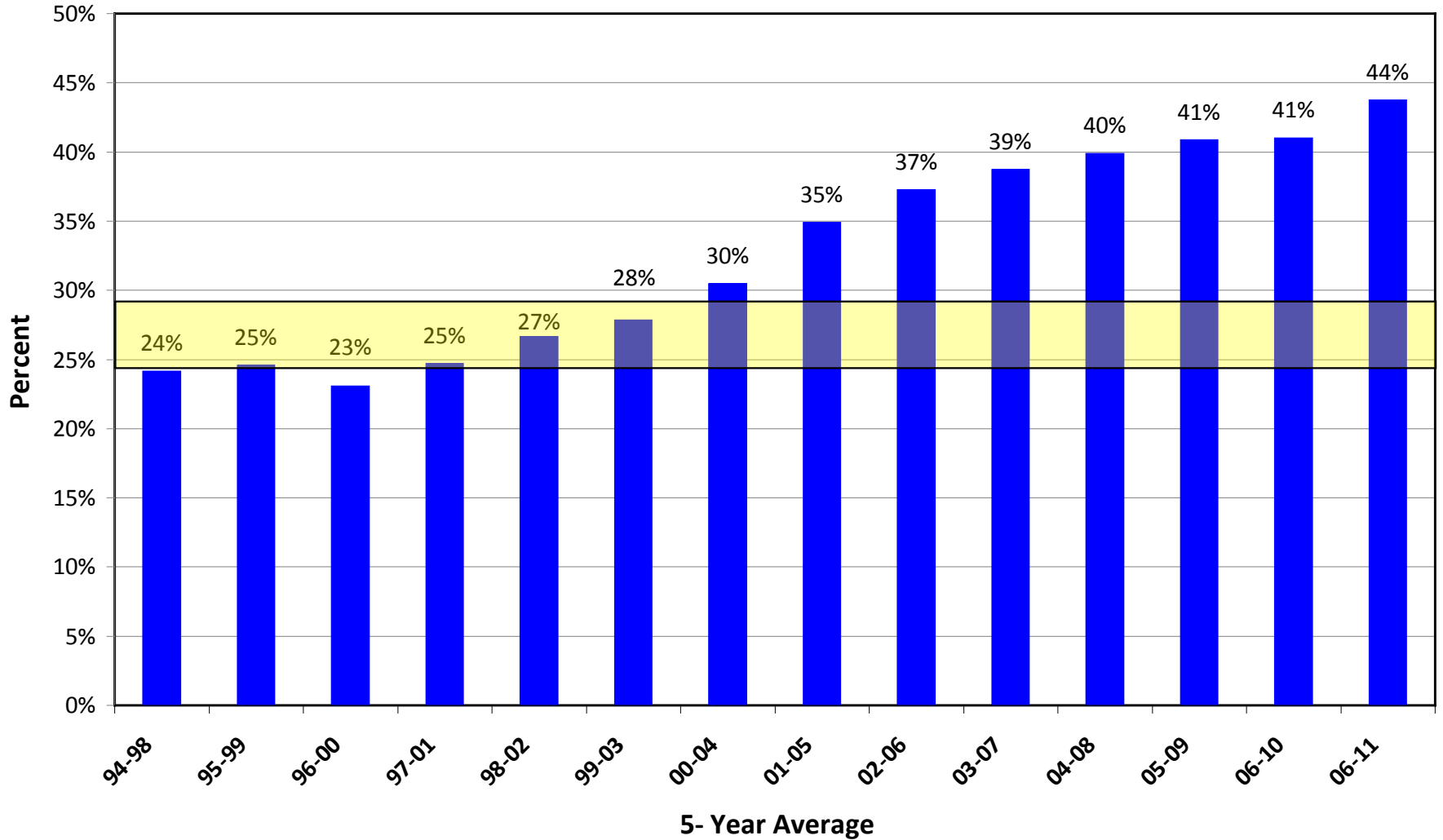
- The Southeastern Alaska Area Enhanced Salmon Allocation Management Plan

<b>Troll</b>	<b>27% - 32%</b>
<b>Gillnet</b>	<b>24% - 29%</b>
<b>Seine</b>	<b>44% - 49%</b>

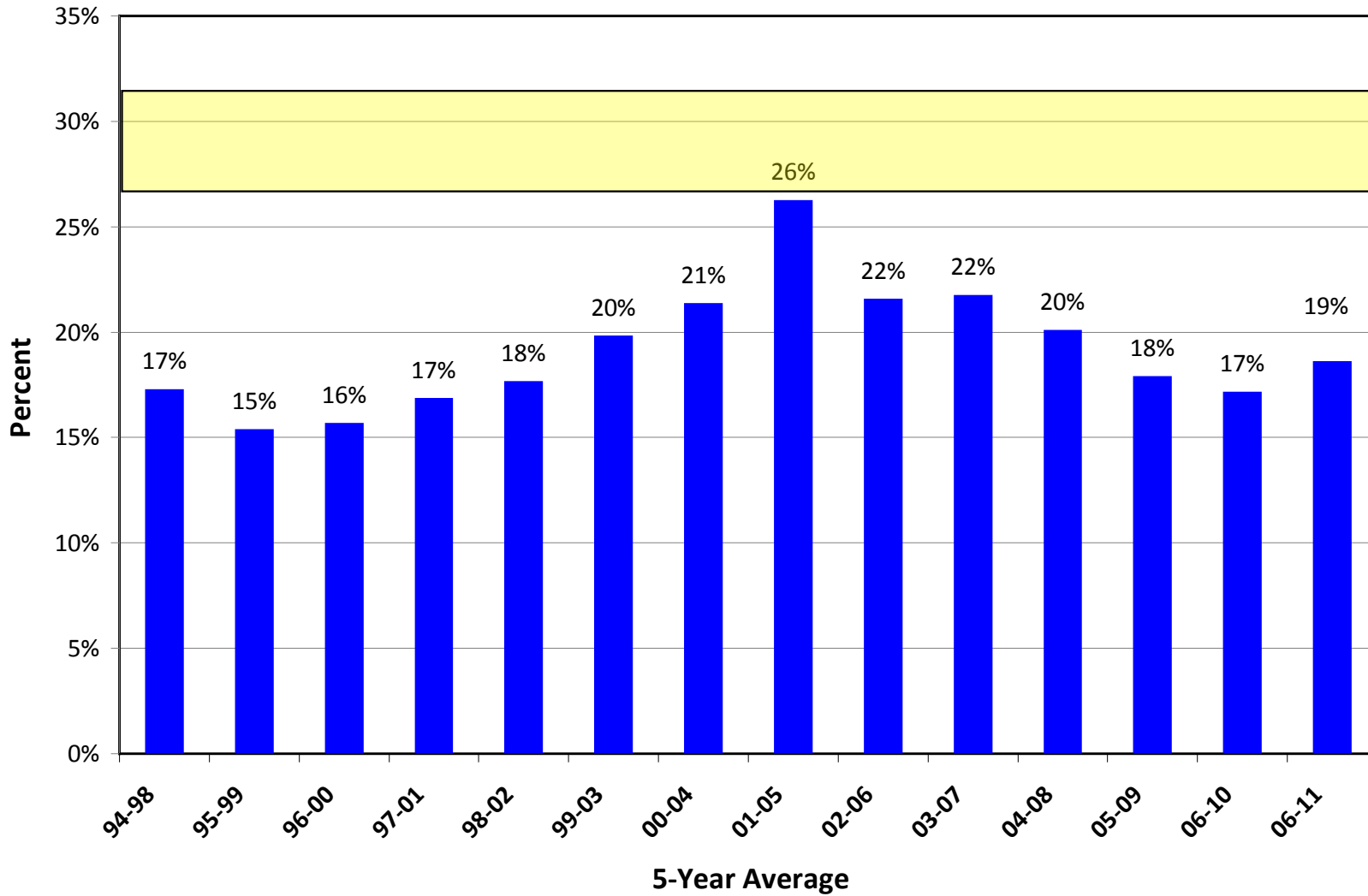
## All Enhanced Salmon - Seine (allocative range 44-49%)



# All Enhanced Salmon - Gillnet (allocative range 24-29%)

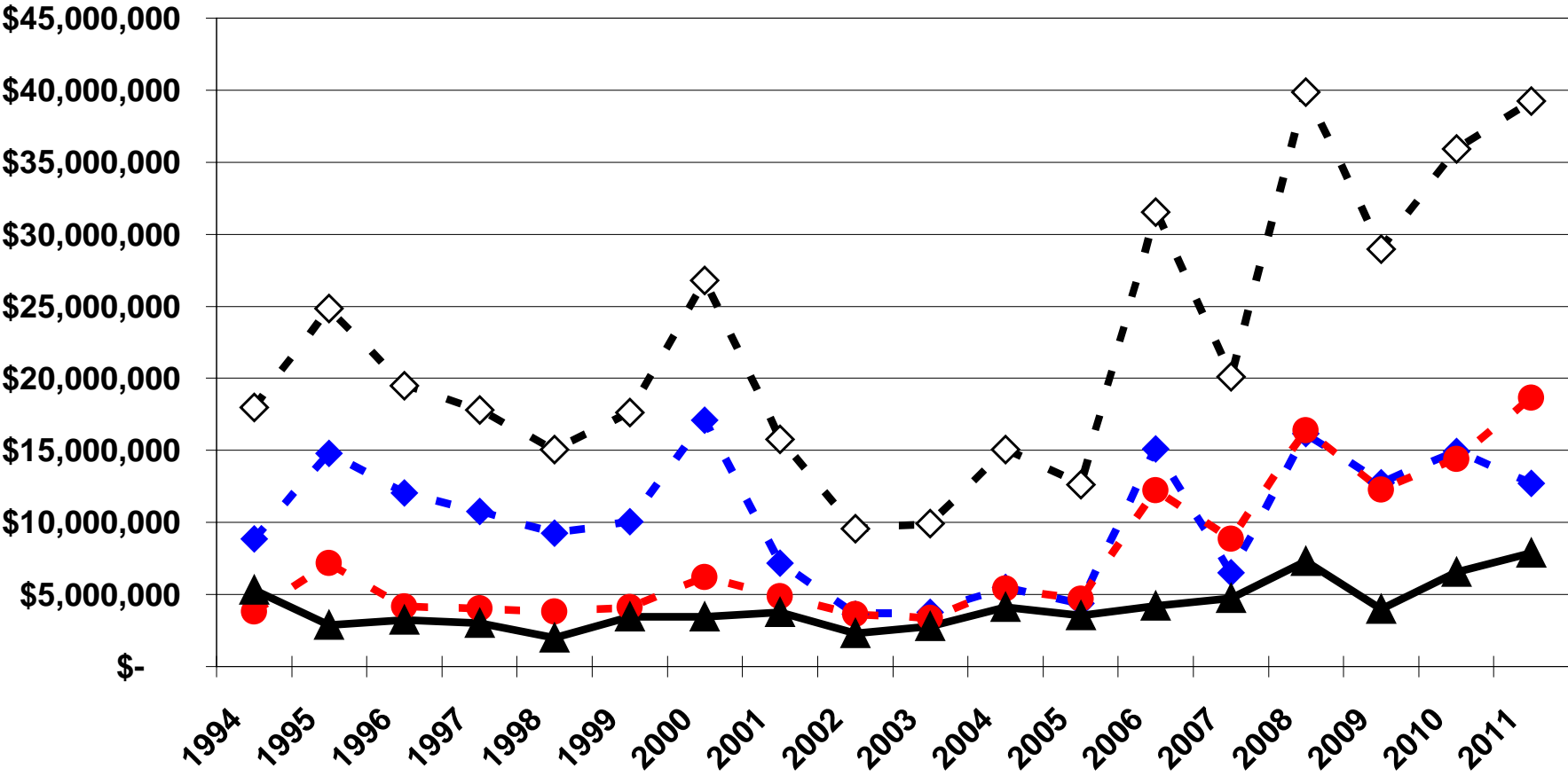


# All Enhanced Salmon - Troll (allocative range 27-32%)



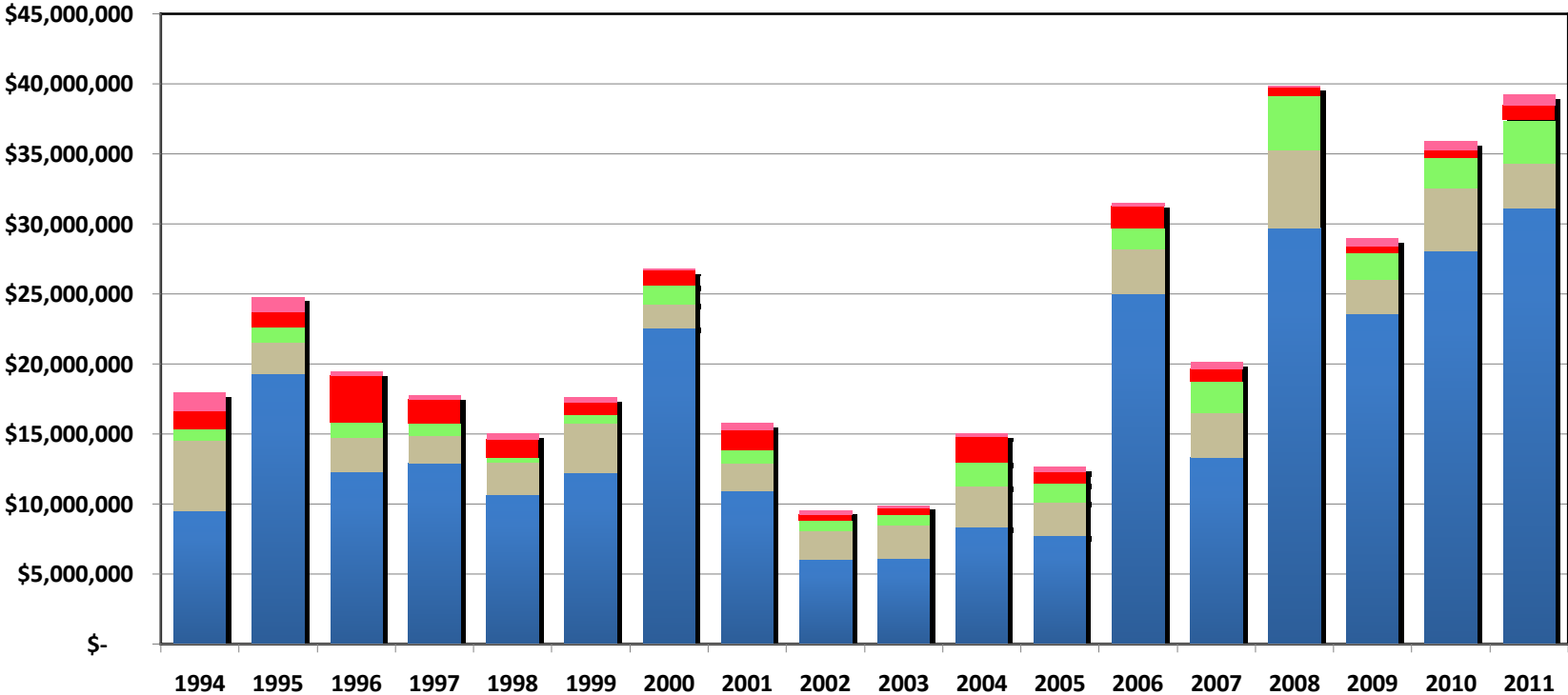
# Value of Enhanced Salmon by Gear Type

seine gillnet troll TOTAL

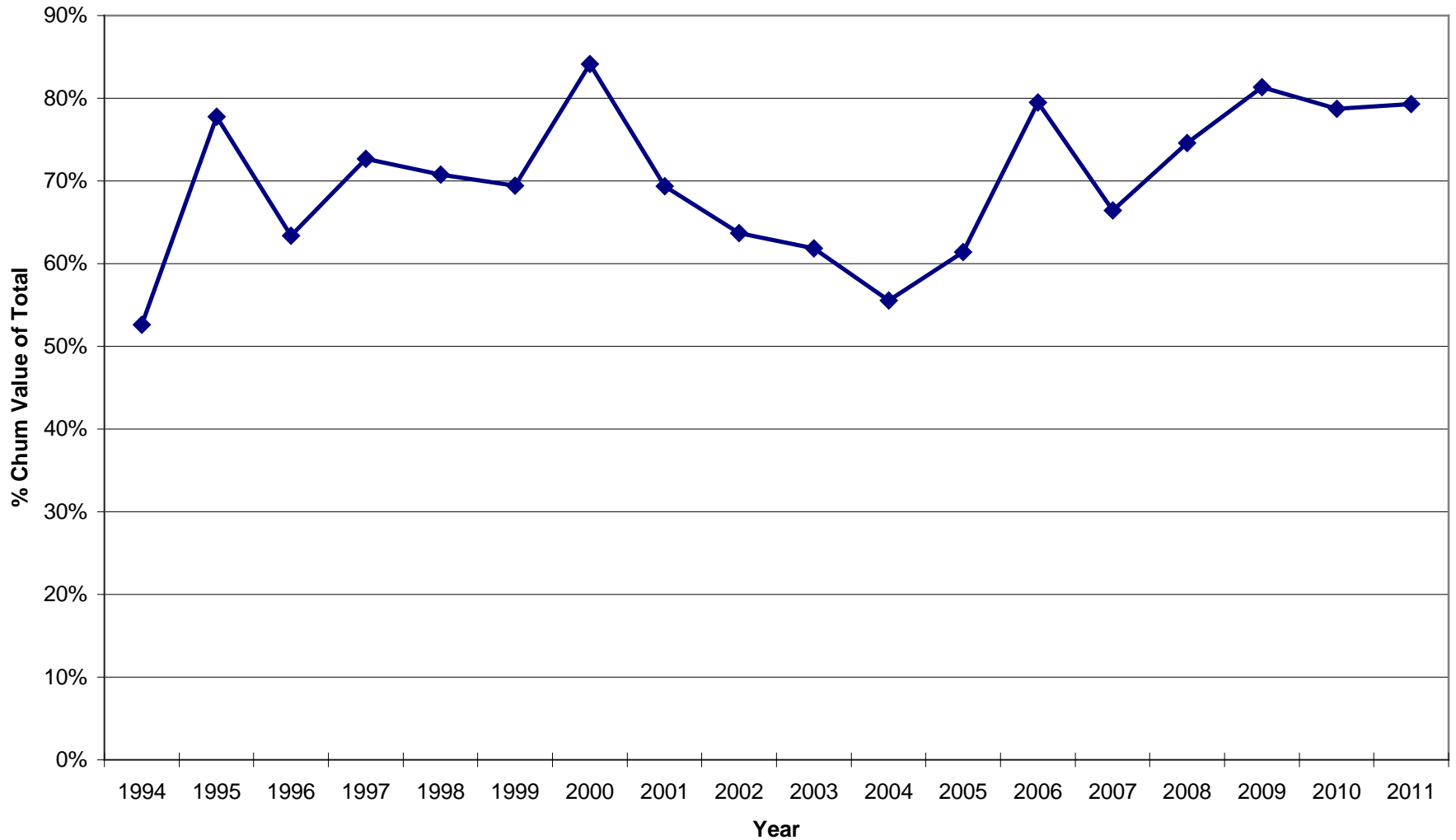


# Value of Enhanced Salmon by Species

■ chum   ■ coho   ■ chinook   ■ sockeye   ■ pink



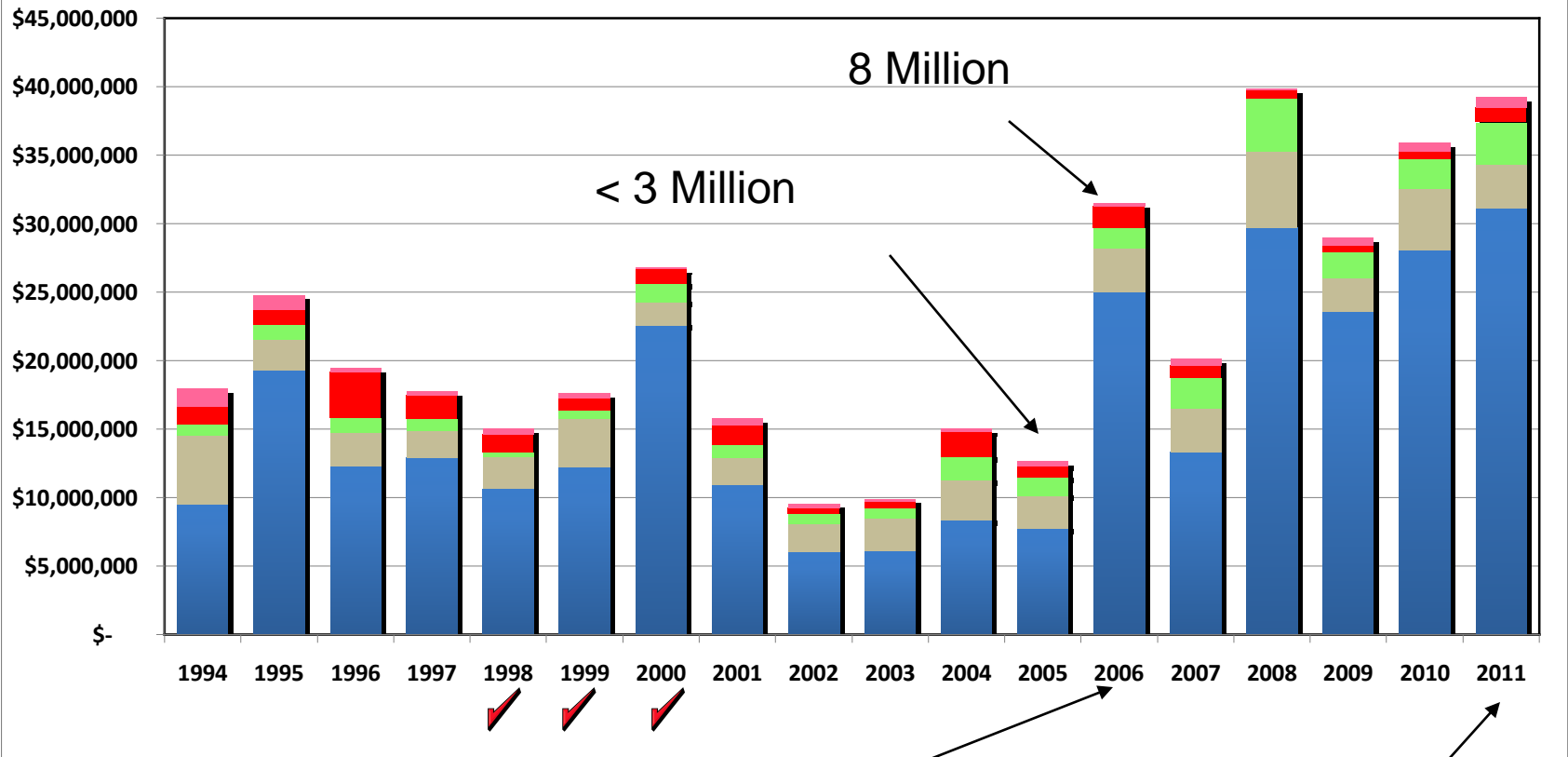
## Percent of Annual Value Derived From Chum





# Value of Enhanced Salmon by Species

■ chum   
 ■ coho   
 ■ chinook   
 ■ sockeye   
 ■ pink



\$0.34

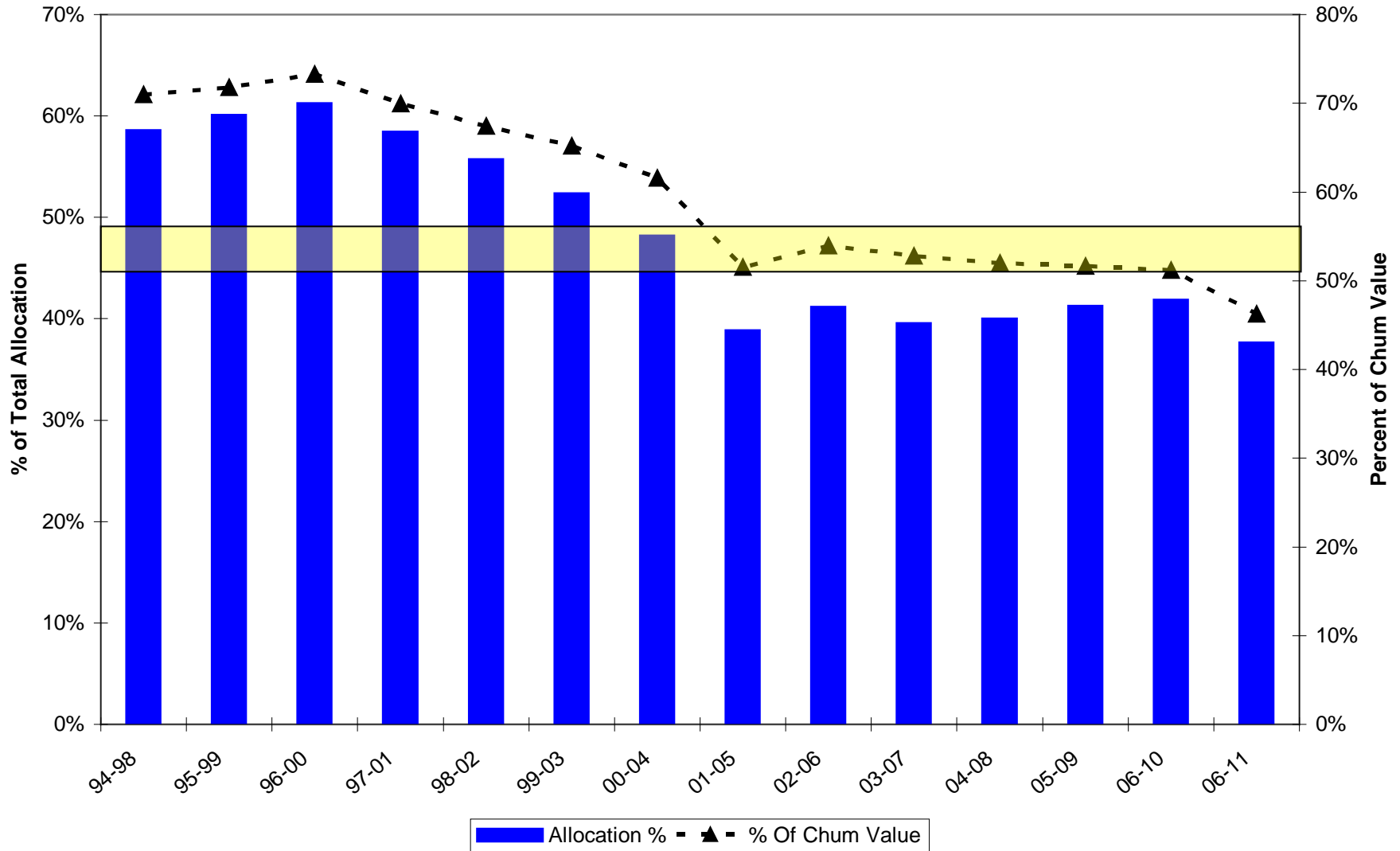
>\$0.85

5 Million

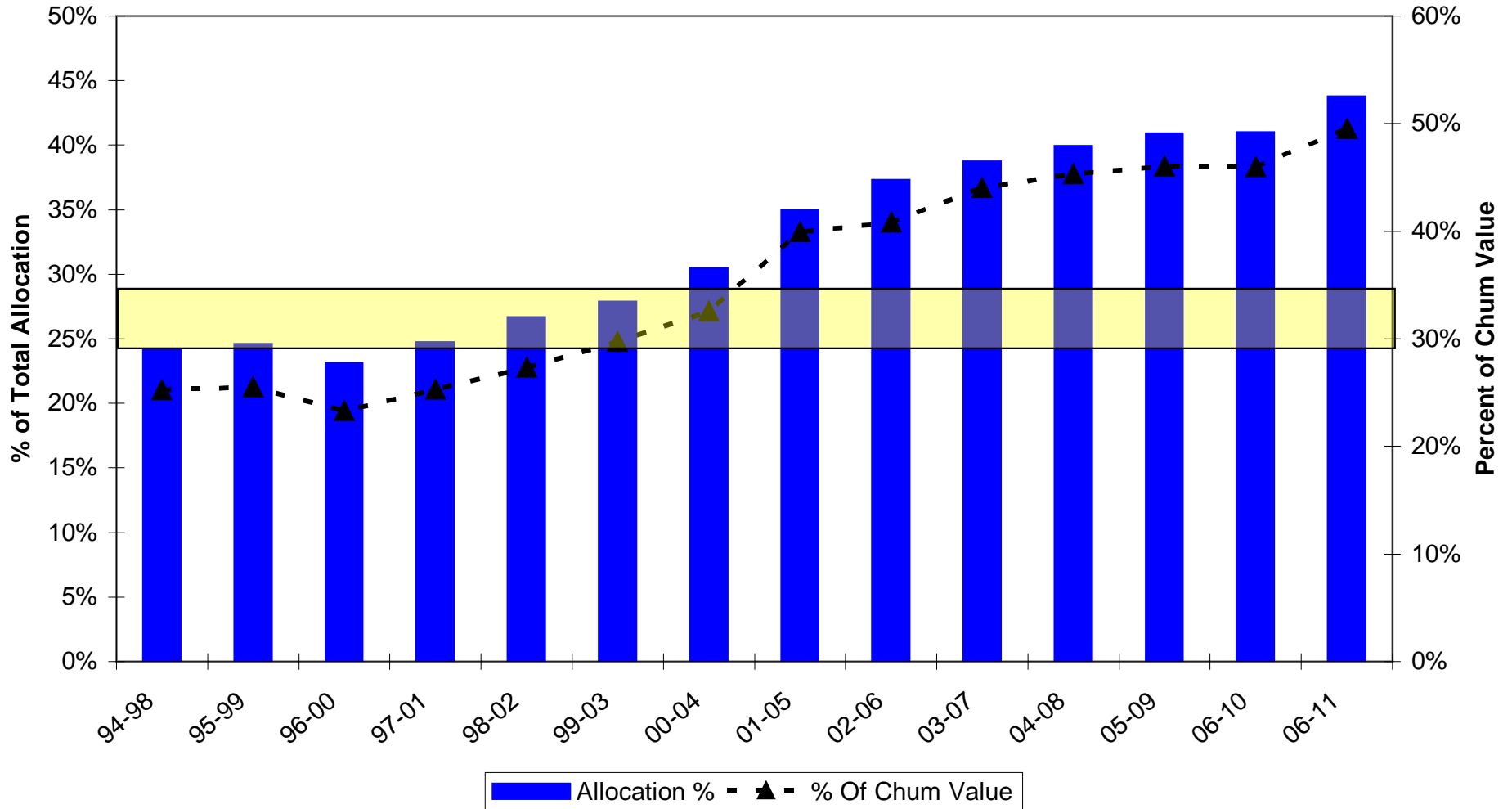
< 3 Million

8 Million

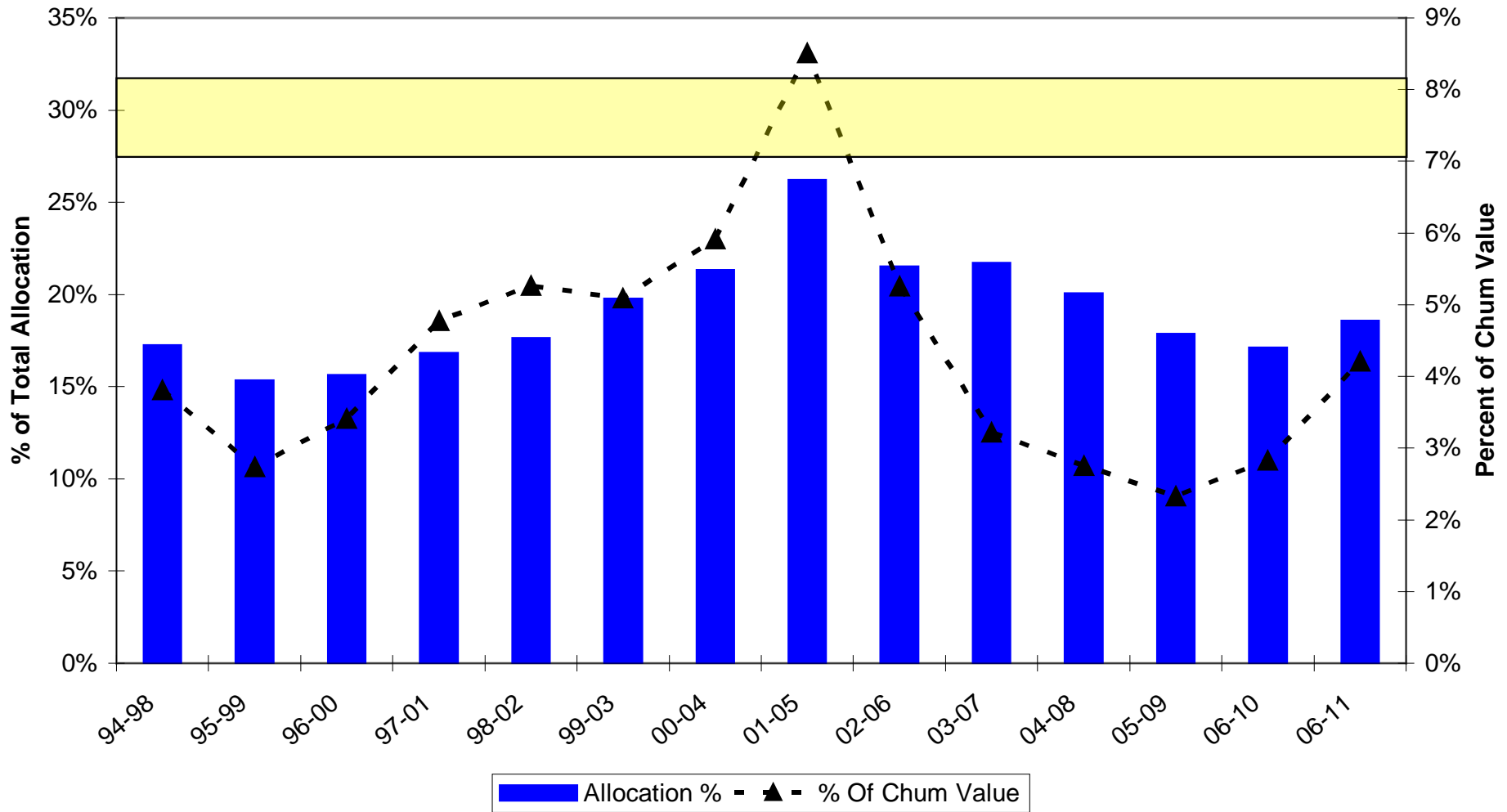
# Seine - Allocation Range & Percent Chum Value



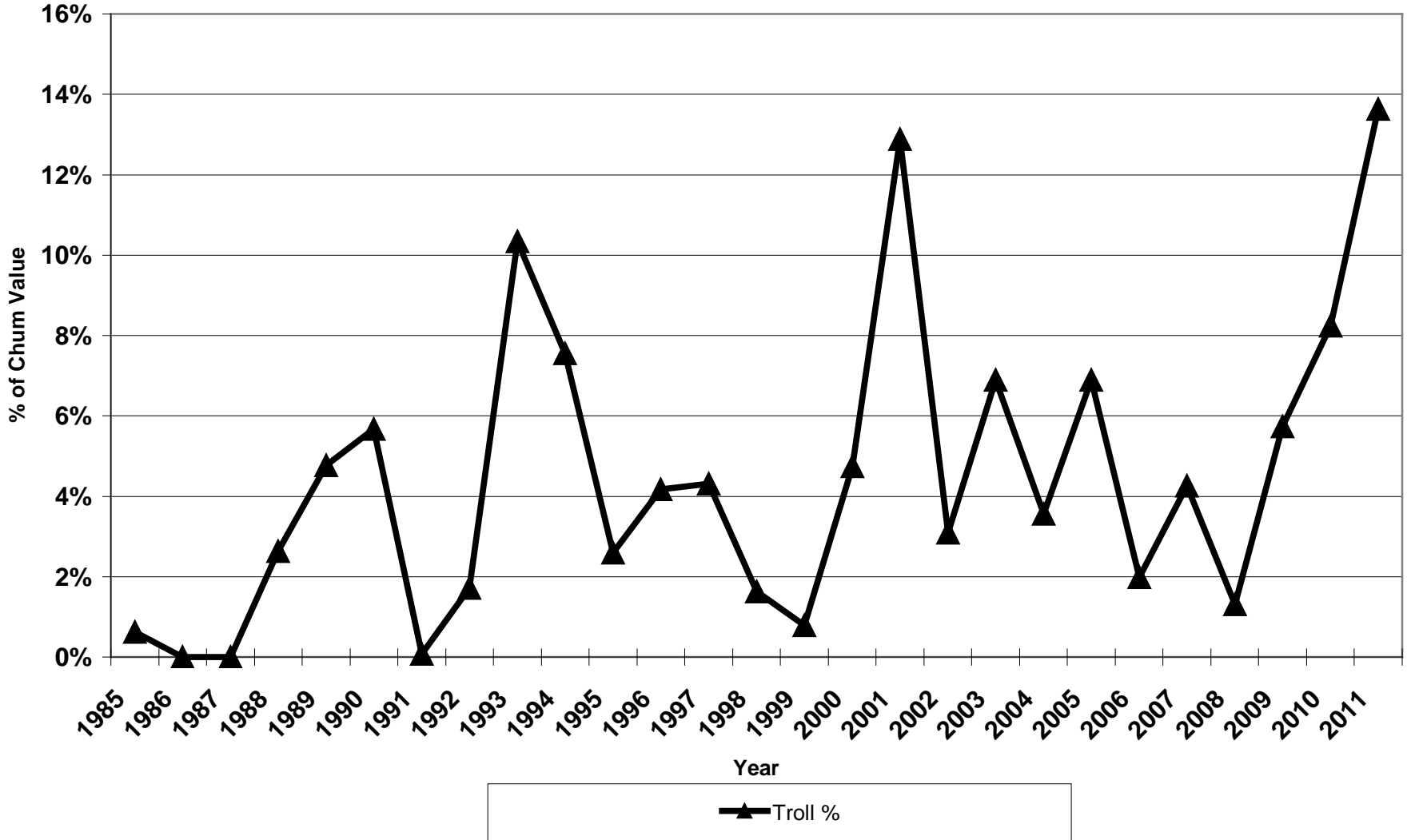
## Gillnet - Allocation Range & Percent Chum Value



# Troll - Allocation Range & Percent Chum Value



# Value of Chum Production To Troll Fleet



The Southeastern Alaska Area  
Enhanced Salmon Allocation  
Management Plan [5 AAC 33.364]

- \* ***“The Board at its discretion can adjust SHA rotations to address allocation”***

# 14 Guiding Principles

\* ***New enhanced salmon production***

# Southeast Alaska Chum Prices

Year	\$ /Lb
2005	\$0.32
2006	\$0.34
2007	\$0.37
2008	\$0.70
2009	\$0.52
2010	\$0.68
2011	\$0.85
2012	>\$0.85 ?
2013	<\$0.85 ?
2014	>\$1.37 ?



# 14 Guiding Principles

- \* ***New enhanced salmon production***
- \* ***Modification of enhancement project  
production***

