

The Making of Marx Creek

An underwater photograph showing a school of fish swimming over a rocky riverbed. The rocks are covered in green moss or algae. The water is clear and greenish.

Jessica Davila
Ketchikan- Misty Fiords
Ranger District

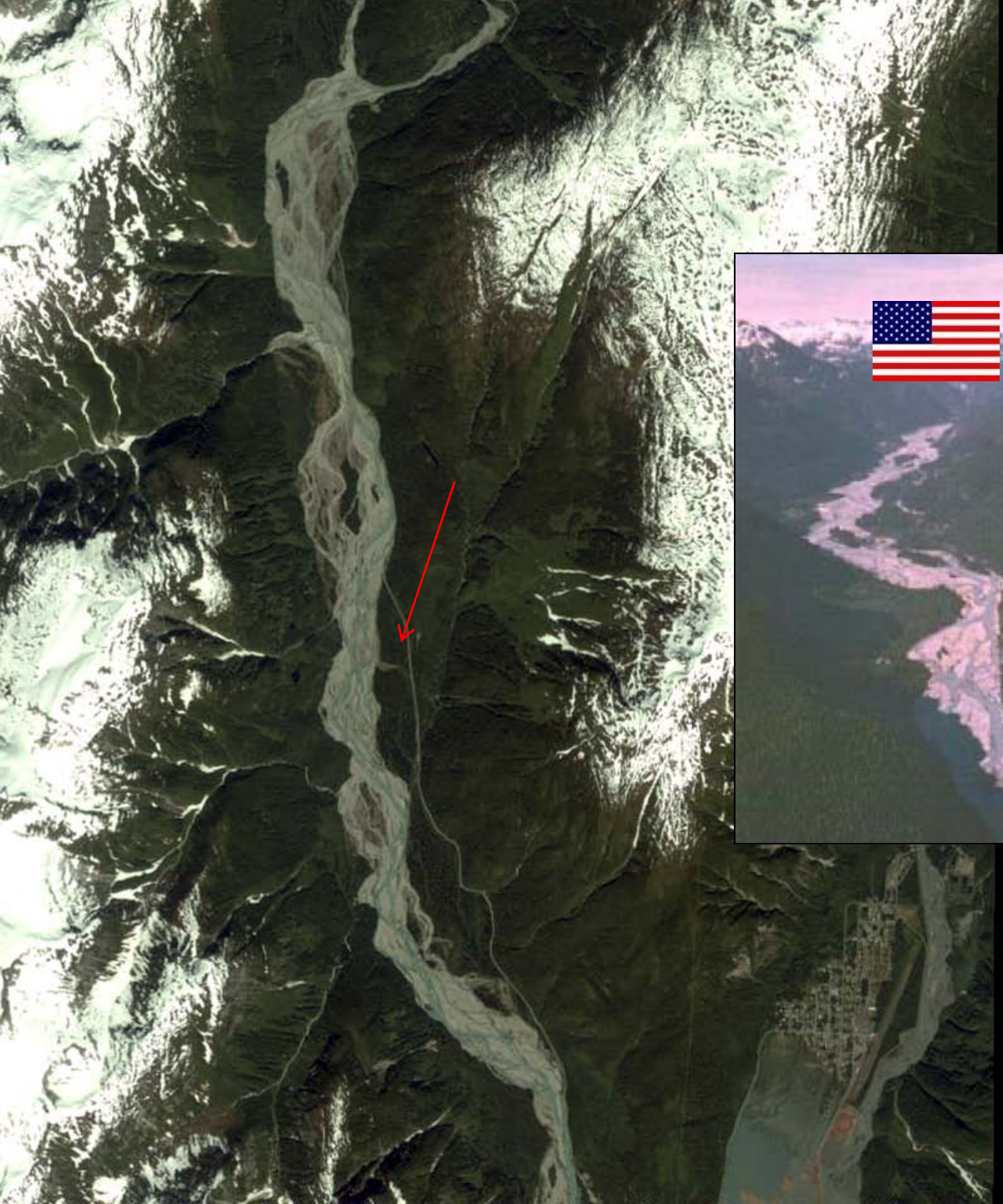
YOU
ARE
HERE



- Fish Creek chum salmon are larger than average chum salmon.

“May be the largest in North America” John H. Helle

- Fish Creek Chum have been studied over thirty years
- Chum salmon stocks of Southern Southeast Alaska and Northern British Columbia particularly those in Portland Canal have been designated as stocks of special concern by the US and Canada Pacific Salmon Treaty





Foot of Salmon Glacier
Head Waters of Salmon River

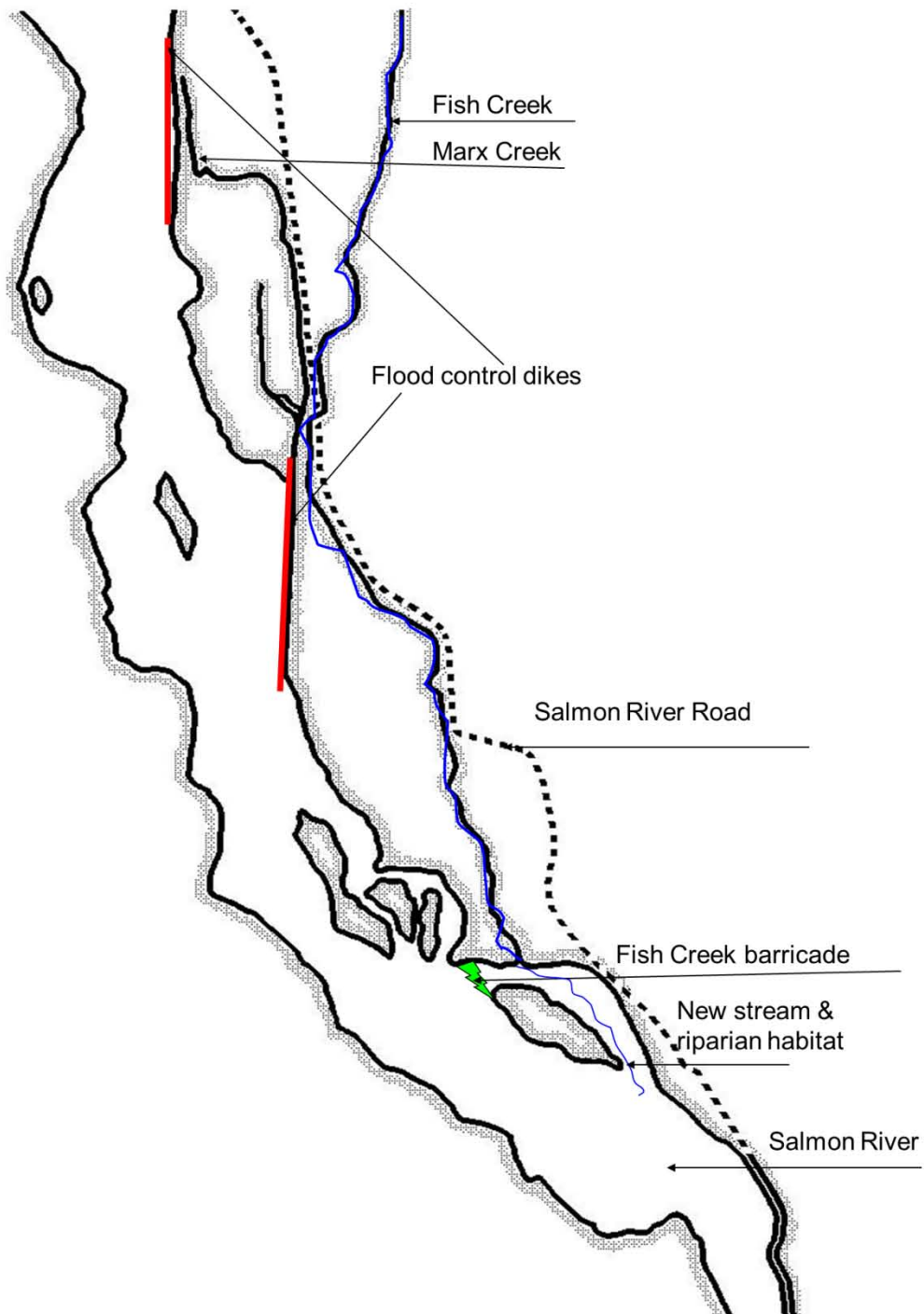
During a Flood



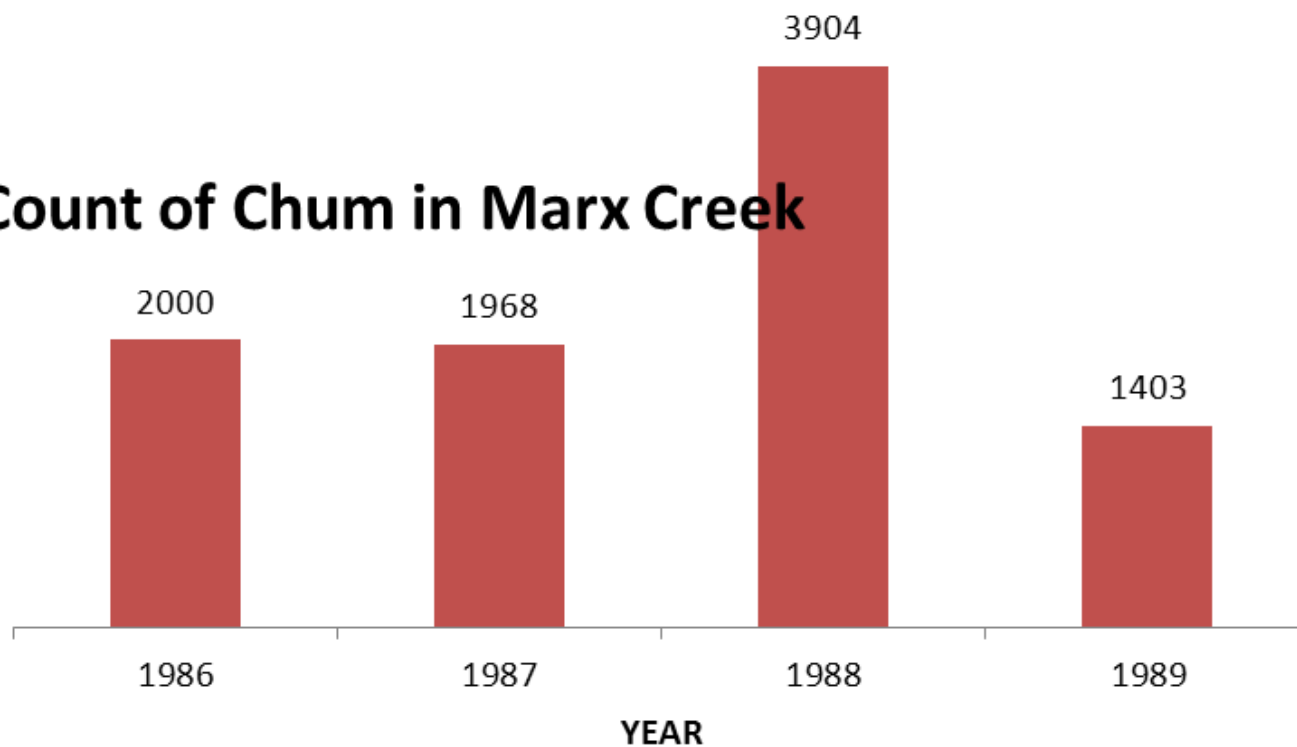
and after



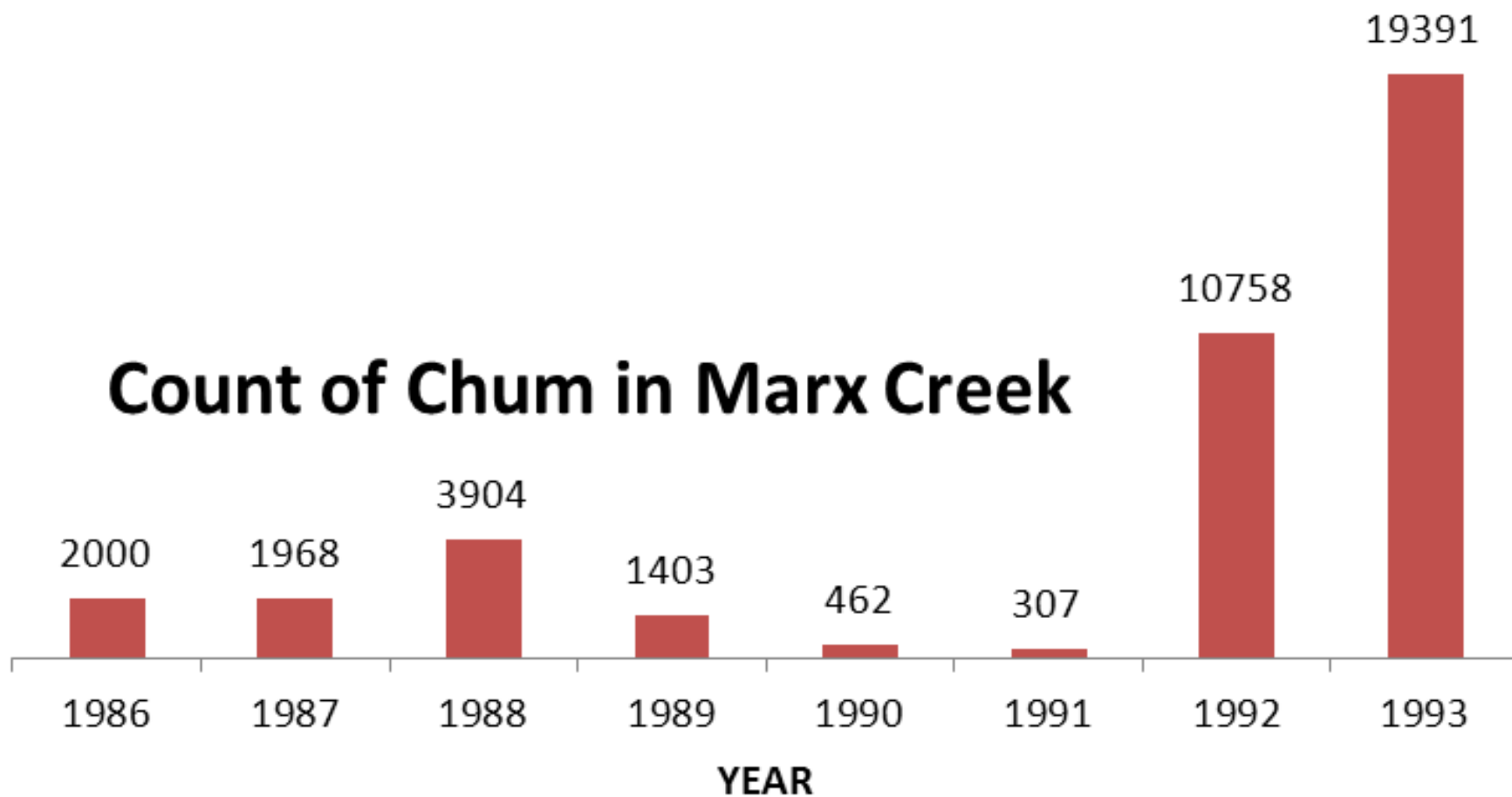
1967-
1979



Count of Chum in Marx Creek



Count of Chum in Marx Creek



2005





Upper
Marx
Creek

Proposed
Channel
Extension

Lower Marx Creek

2008



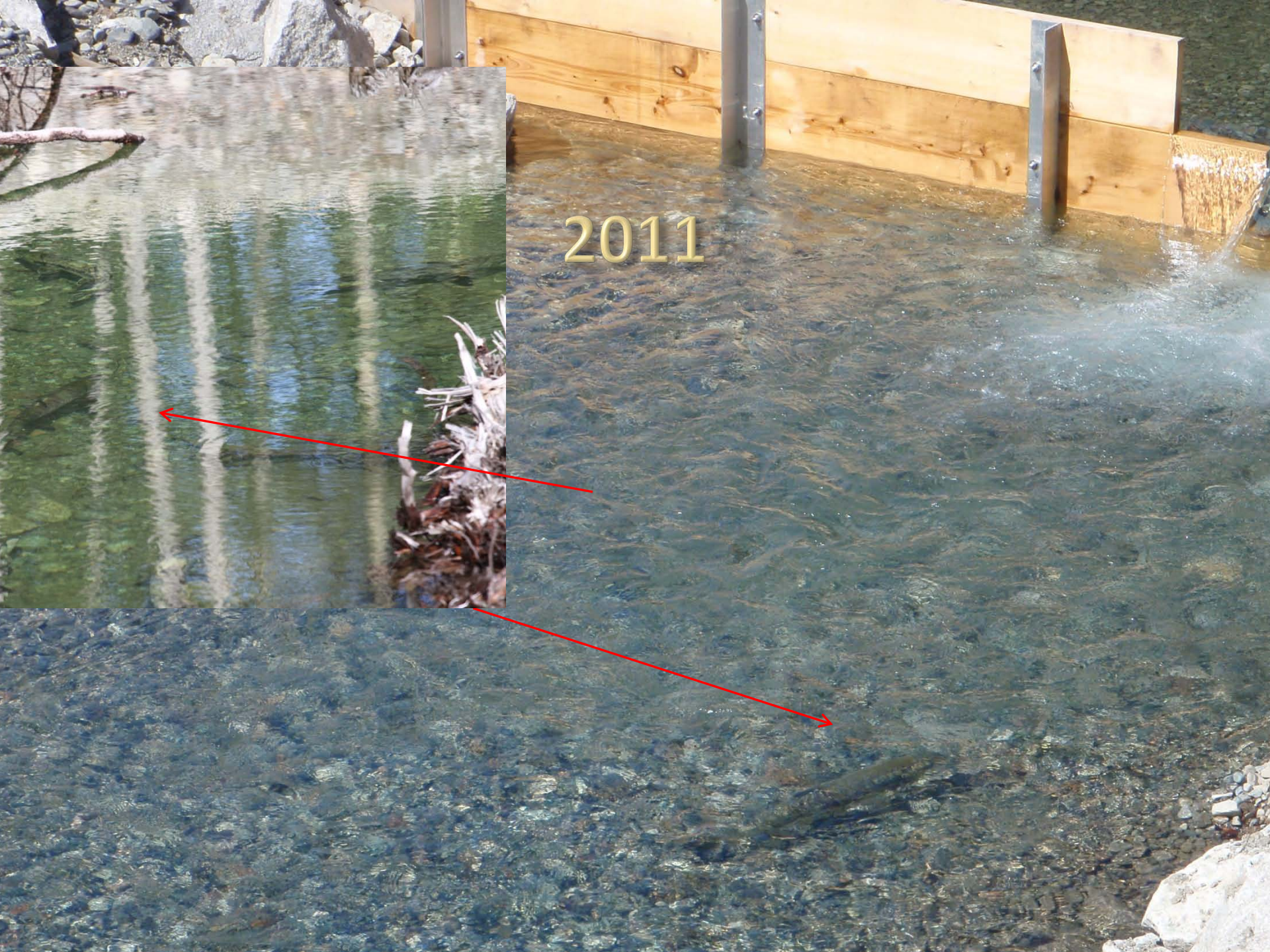




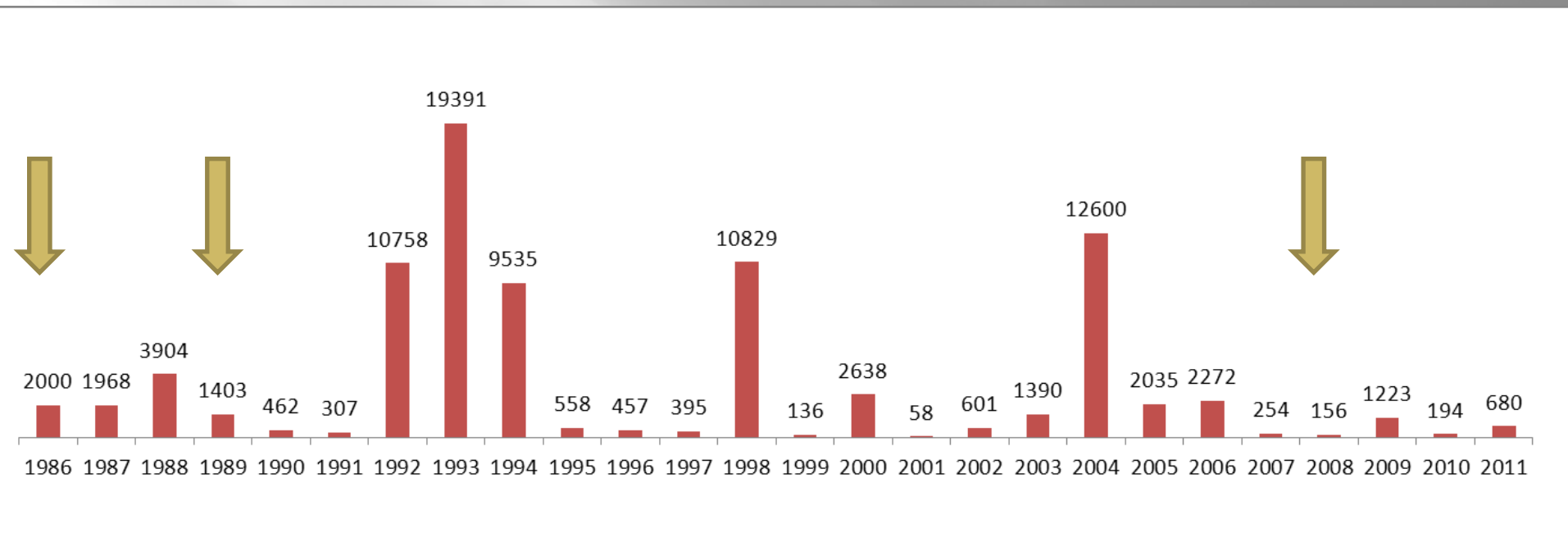


2011





2011





Questions