

PRELIMINARY 2008 POST SEASON REPORT
FOR UNITED STATES SALMON FISHERIES
OF RELEVANCE TO
THE PACIFIC SALMON TREATY

December, 2008

TABLE OF CONTENTS

1. Preliminary 2008 Southeast Alaska Fisheries	
Northern Boundary Area	- Page 1
Transboundary Area Fisheries	- Page 14
Chinook Fishery	- Page 29
Coho Fishery	- Page 31
2. Preliminary 2008 Chinook and Coho Salmon Catches in Washington and Oregon Fisheries.	- Page 33
3. Preliminary Review of 2008 Washington Chum Fisheries	- Page 43
4. Preliminary Review of 2008 U.S. Fraser River Sockeye and Pink Fisheries	- Page 47

POST SEASON REPORT

PRELIMINARY 2008 SOUTHEAST ALASKA FISHERIES NORTHERN BOUNDARY AREA FISHERIES

District 104 Purse Seine Fishery

The June 30, 1999 revision of the Pacific Salmon Treaty (PST) Agreement calls for abundance based management of the District 104 purse seine fishery. The agreement allows the District 104 purse seine fishery to harvest 2.45 percent of the Annual Allowable Harvest (AAH) of Nass and Skeena sockeye prior to Alaska Department of Fish and Game (ADFG) statistical week 31. The AAH is calculated as the total run of Nass and Skeena sockeye salmon minus either the escapement requirement of 1.1 million (200,000 Nass and 900,000 Skeena) or the actual inriver escapement, whichever is less.

The District 104 purse seine fishery opens the first Sunday in July; in 2008 the initial opening was July 6 (Week 28). The pre-Week 31 fishing plan for District 104 was based on the preseason Canadian DFO forecast returns of approximately 479,000 Nass and 1.27 million Skeena sockeye salmon.

In the 2008 treaty period, 6,262 sockeye were harvested in; an 8-hour opening in Week 28; a 10-hour opening in Week 29; and a 15-hour opening in Week 30 (Table 1). The number of purse seine vessels fishing ranged from 3 to 16 in individual openings during the treaty period. In past years 60% to 80% of treaty-period sockeye have been of Nass and Skeena origin. Thus, we would anticipate that between 3,760 and 5,010 Nass and Skeena sockeye were harvested in the District 104 purse seine fishery during the treaty period. The final number of Nass and Skeena sockeye harvested, and the actual catch by stock, will not be available until catch, escapement, and stock composition estimates are finalized for the year.

The average numbers of hours, boats and boat-days fished pre-Week 31 in District 104 since the Pacific Salmon Treaty was signed in 1985 are down 55%, 55% and 82% respectively compared to the 1980-1984 period (Table 2). The total pre-Week 31 Treaty-period sockeye harvest is also down 36% despite a 290% increase in the average sockeye catch-per-boat-day since 1984. The seine fleet moves freely between districts as various species are harvested, so seining opportunities elsewhere can affect the effort and catch in District 104.

Table 1. Catch and effort in the Alaska District 104 purse seine fishery, 2008.

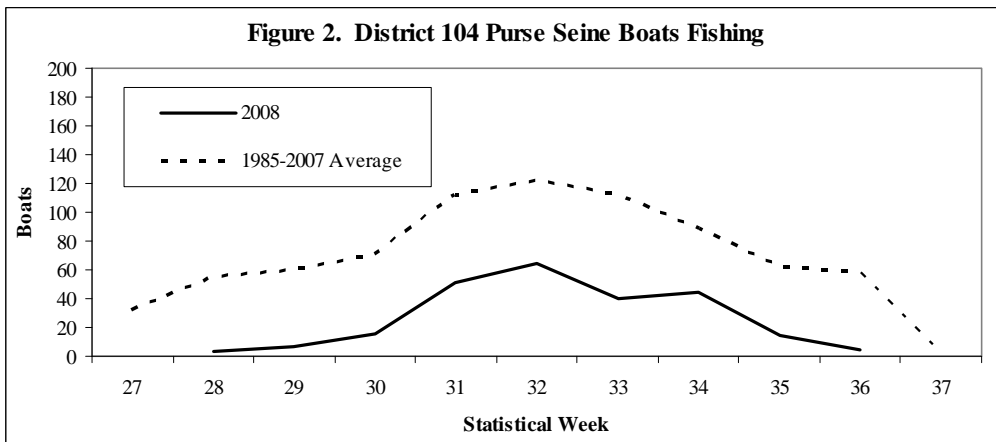
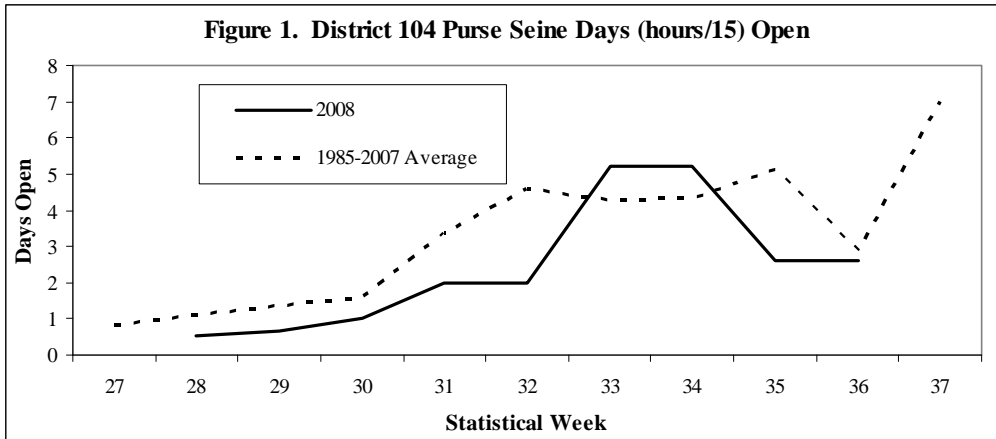
Week/ Opening	Start Date	Chinook	Sockeye	Coho	Pink	Chum	Boats	Hours
28	7/6	0	376	254	507	1,857	3	8
29	7/13	0	2,531	731	1,978	2,731	7	10
30	7/24	0	3,355	5,708	34,053	7,150	16	15
31	7/27	0	2,597	3,420	48,230	4,624	38	15
31B	7/30	0	5,655	8,490	132,674	8,264	47	15
32	8/3	0	5,799	11,436	323,969	12,607	60	15
32B	8/6	0	4,445	6,116	289,110	8,422	47	15
33	8/10	0	6,522	10,606	661,664	10,203	37	39
33B	8/14	104	3,199	6,746	517,906	13,442	27	39
34	8/18	298	2,328	8,095	421,728	12,772	38	39
34B	8/22	52	3,160	4,844	309,959	10,592	24	39
35	8/26	12	1,036	2,025	91,494	4,867	13	39
35B	8/30	0	72	218	10,881	1,019	5	39
Weeks 27-30		0	6,262	6,693	36,538	11,738	17	33
Weeks 31-35		466	34,813	61,996	2,807,615	86,812	84	294
Total Season		466	41,075	68,689	2,844,153	98,550	84	327

Table 2. Fishing opportunity, effort, and sockeye harvest prior to Week 31 in the District 104 purse seine fishery, 1980 to 2008.

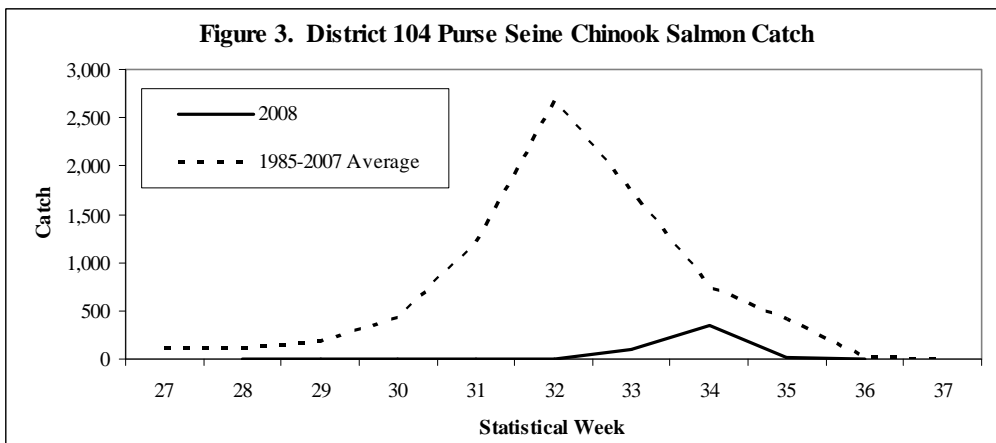
Year	Hours Fished	Boats Fishing	Fraction Days Fished (1d=15hrs)	Boat-Days Fished (Fraction Boats and Fraction Days)	Sockeye Harvest	Sockeye Catch per Boat-Day
1980	207	244	13.8	2,877	266,273	93
1981	132	212	8.8	1,108	185,188	167
1982	117	255	7.8	1,435	213,150	149
1983	108	241	7.2	1,211	170,306	141
1984	132	174	8.8	805	103,319	128
1985	84	141	5.6	502	100,590	200
1986	108	194	7.2	968	91,320	94
1987	90	134	6	457	72,385	158
1988	108	210	7.2	994	248,789	250
1989	84	135	5.6	438	157,566	360
1990	42	171	2.8	276	169,943	615
1991	41	134	2.7	243	98,583	406
1992	29	108	1.9	142	79,643	561
1993	45	171	3	343	163,189	476
1994	55	84	3.7	202	158,524	783
1995	58	109	3.9	218	71,376	328
1996	31	113	2.1	128	215,144	1,684
1997	56	159	3.7	409	572,942	1,402
1998	32	78	2.1	89	17,394	196
1999	30	38	2	44	7,664	174
2000	81	66	5.4	192	48,969	255
2001	50	95	3.3	182	203,090	1,115
2002	72	44	4.8	124	26,554	215
2003	52	40	3.5	97	84,742	875
2004	107	24	7.1	102	30,758	302
2005	68	38	4.5	93	35,690	382
2006	95	39	6.3	117	89,615	766
2007	50	68	3.3	136	112,135	824
2008	33	17	2.2	22	6,262	281
Avg. 80-84	139	225	9	1,487	187,647	136
Avg. 85-08	63	100	4	272	119,286	529
% Change	-55%	-55%	-55%	-82%	-36%	290%

In the 2008 season, the District 104 purse seine fishery harvested 2,844,153 pink salmon, 41,075 sockeye, 68,689 coho, 98,550 chum, and 466 Chinook salmon. During the 2008 season, 84 purse seine vessels fished in District 104, up from a low of 60 in 2004 but still well below the 200-300 fishing in the 1980's and early 1990's. The number of days that the fishery was open was below the treaty-

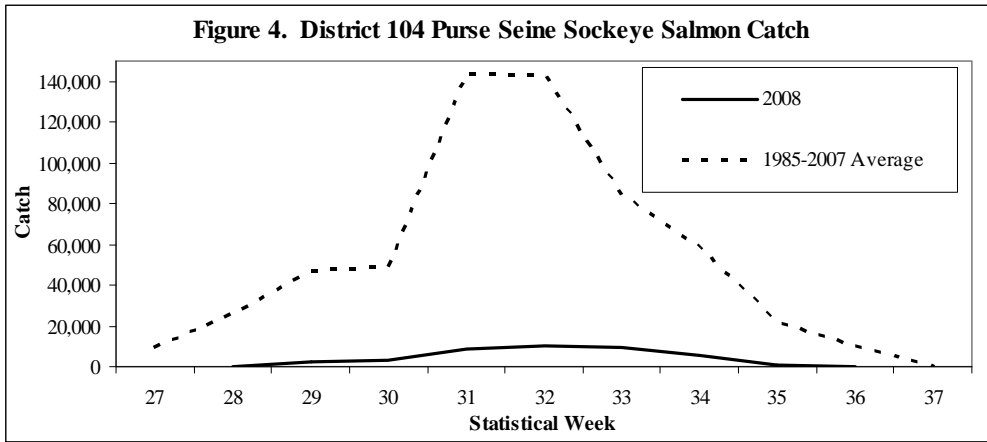
period average except in weeks 33 and 34. The number of boats fishing was below average throughout the season (Figure 2).



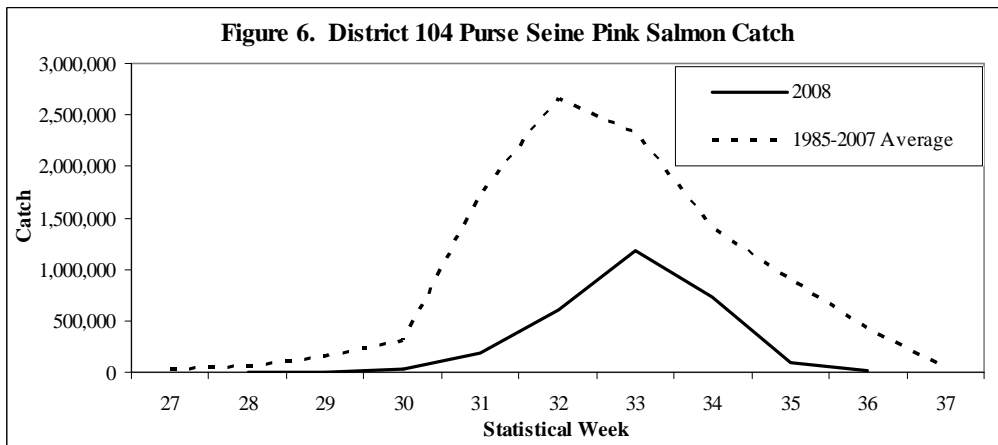
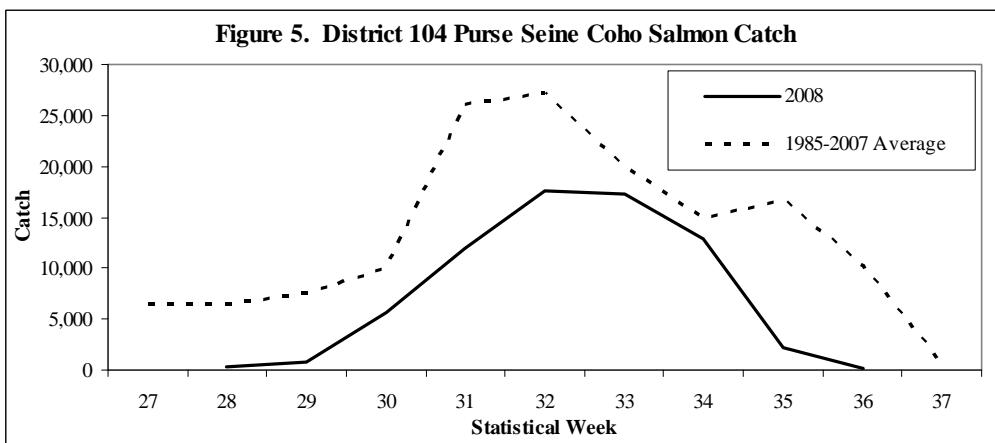
The Chinook retention period in the 2008 District 104 purse seine fishery began August 14 (week 33). Due to the low number of boats fishing during this period and the low abundance of Chinook the catches were far below average.

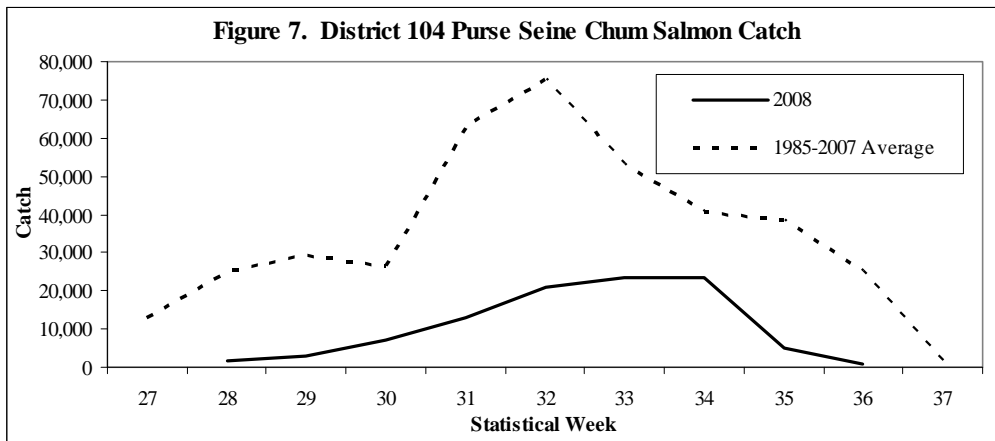


Sockeye salmon catches were far below average throughout the season (Figure 4). The treaty period (week 28-30) sockeye catch of 6,262 was the lowest since the treaty was signed in 1985 and the season's total catch of 41,075 was the second lowest.



Catches of coho, pink, and chum salmon were also below average throughout the season (Figures 5-7).





District 101 Drift Gillnet Fishery

The June 30, 1999 PST agreement calls for abundance based management of the District 101 (Tree Point) drift gillnet fishery. The agreement specifies a harvest of 13.8 percent of the AAH of the Nass River sockeye run. For the 2008 season, DFO forecast a total return of 479,000 Nass River sockeye salmon. The AAH is calculated as the total run of Nass sockeye salmon minus either the escapement requirement of 200,000 or the actual inriver escapement, whichever is less.

The District 101 drift gillnet fishery opens by regulation on the third Sunday in June. During the early weeks of the fishery, management is based on the run strength of Alaska wild stock chum and sockeye salmon and on the strength of the Nass River sockeye salmon. Beginning in the third week of July, when pink salmon stocks begin to enter the fishery in large numbers, management emphasis shifts by regulation to that species. By regulation, the District 101 Pink Salmon Management Plan sets gillnet fishing time in this district in relation to the District 101 purse seine fishing time when both fleets are concurrently harvesting the same pink salmon stocks.

A total of 34,113 sockeye salmon were harvested in the District 101 drift gillnet fishery in 2008 (Table 3). The sockeye harvest was less than 25% the 1985-2007 average of 141,841. The number of hours fished was above average. The number of boats fishing annually, while still less than half the 1985-2007 average of 122, rose from a treaty period low of 48 in 2006 to 54 in 2008. The final number of Nass River sockeye harvested at Tree Point will not be available until catch, escapement, and stock composition estimates are finalized for the 2008 season.

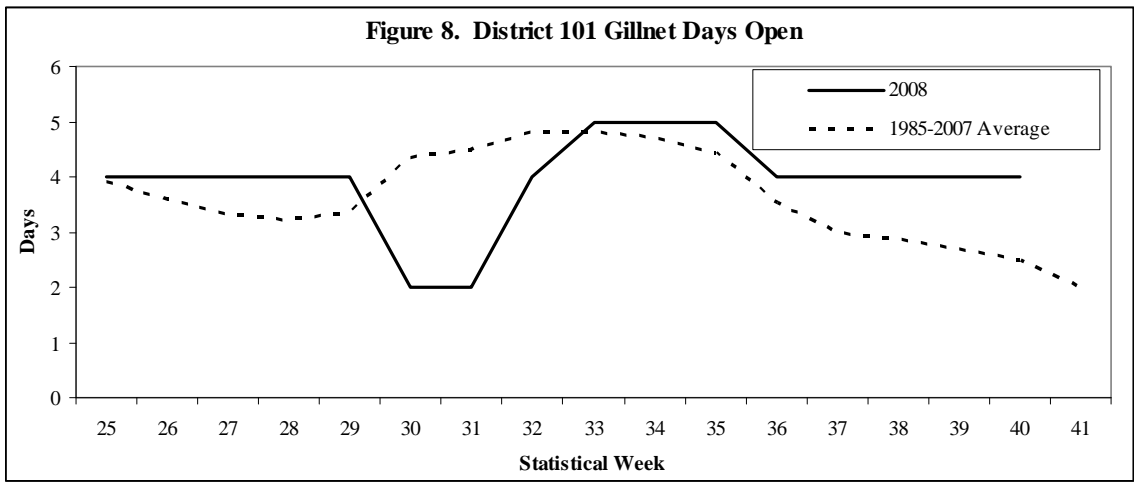
Table 3. Weekly catch and effort in the Alaska District 101 commercial drift gillnet fishery, 2008.

Week	Start Date	Chinook	Sockeye	Coho	Pink	Chum	Boats	Hours
25	15-Jun	484	3,291	864	875	4,787	32	96
26	22-Jun	506	4,540	1,613	3,031	10,575	33	96
27	29-Jun	369	4,949	2,944	6,575	19,380	37	96
28	6-Jul	182	6,175	2,776	21,152	50,540	40	96
29	13-Jul	154	3,361	4,041	12,932	45,314	42	96
30	20-Jul	65	4,733	1,745	13,367	27,533	37	48
31	27-Jul	35	1,313	3,010	11,454	14,173	37	48
32	3-Aug	45	4,394	8,983	48,669	11,624	34	96
33	10-Aug	22	552	5,372	50,483	8,009	30	120
34	17-Aug	5	382	4,222	56,212	7,028	29	120
35	24-Aug	7	273	6,233	21,206	13,502	29	120
36	31-Aug	3	141	7,404	17,730	11,270	34	96
37	7-Sep	2	2	10,465	5,704	7,135	31	96
38	14-Sep	1	5	19,685	1,231	6,129	30	96
39	21-Sep	1	2	16,399	15	2,612	28	96
40	28-Sep	0	0	143	0	26	3	96
Total		1,881	34,113	95,899	270,636	239,637	54	1,512
1985-2007 Avg.		1,472	141,841	41,656	550,524	308,861	122	1,326

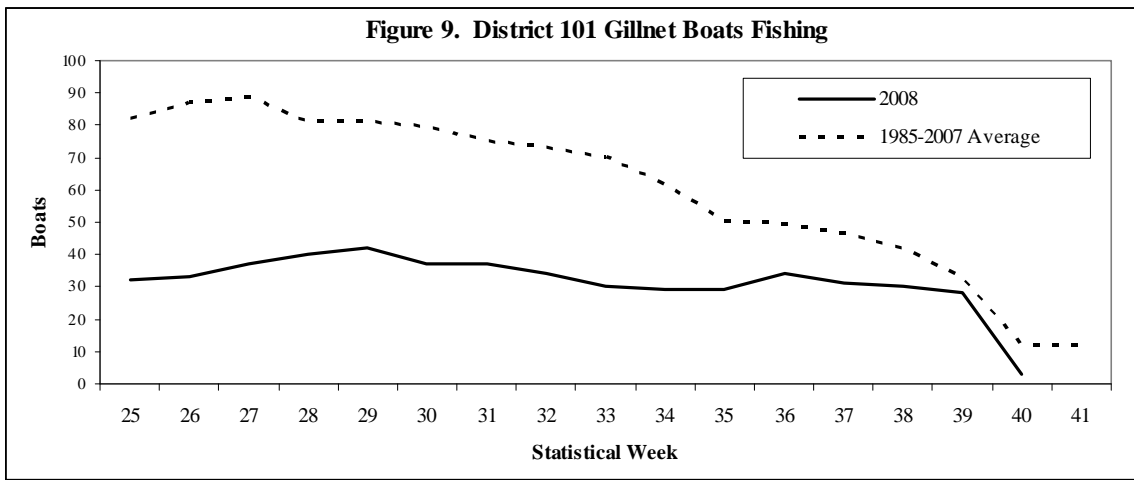
Table 4. Annual sockeye harvest in the Alaska District 101 drift gillnet fishery, 1985 to 2008, and comparison of sockeye harvest and effort (number of boats, hours, and boat-hours fished) between Statistical Weeks 26 and 35 when sockeye salmon are most abundant in this district.

Year	Total Sockeye Harvest	Catch and Effort between Weeks 26-35			Boat-Hours
		Sockeye Harvest	Boats	Hours	
1985	173,100	159,021	153	1,032	157,865
1986	145,699	143,286	198	960	190,044
1987	107,503	106,638	170	615	104,519
1988	116,115	115,888	187	756	141,338
1989	144,936	130,024	176	1,023	180,016
1990	85,691	78,131	150	840	125,969
1991	131,492	123,508	130	984	127,920
1992	244,649	243,878	118	1,080	127,416
1993	394,098	390,299	148	1,032	152,733
1994	100,377	98,725	142	984	139,700
1995	164,294	151,131	128	1,008	129,024
1996	212,403	175,569	129	1,104	142,408
1997	169,474	152,662	128	1,008	129,024
1998	160,506	159,307	124	1,044	129,454
1999	160,028	158,268	118	1,032	121,776
2000	94,651	94,399	95	912	86,640
2001	80,041	62,129	73	1,020	74,445
2002	120,353	106,360	68	1,008	68,544
2003	105,263	96,921	68	1,104	75,058
2004	142,357	141,395	61	1,104	67,332
2005	79,725	75,875	69	1,104	76,162
2006	62,770	53,048	45	840	37,791
2007	66,822	50,642	54	1,032	55,717
2008	34,113	30,672	47	936	43,983
Average 1985-2007	141,841	133,352	119	984	114,822

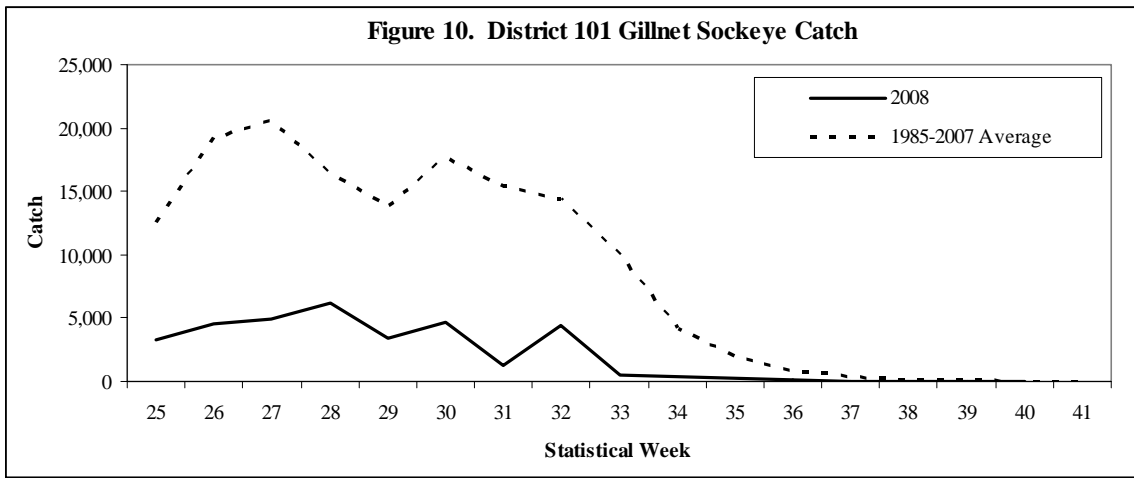
The District 101 gillnet fishery was initially opened Sunday June 15 (Week 25). The durations of weekly openings were below treaty period (1985-2007) averages in Weeks 30-31 and above average from Week 33 until the end of the season (Figure 8).



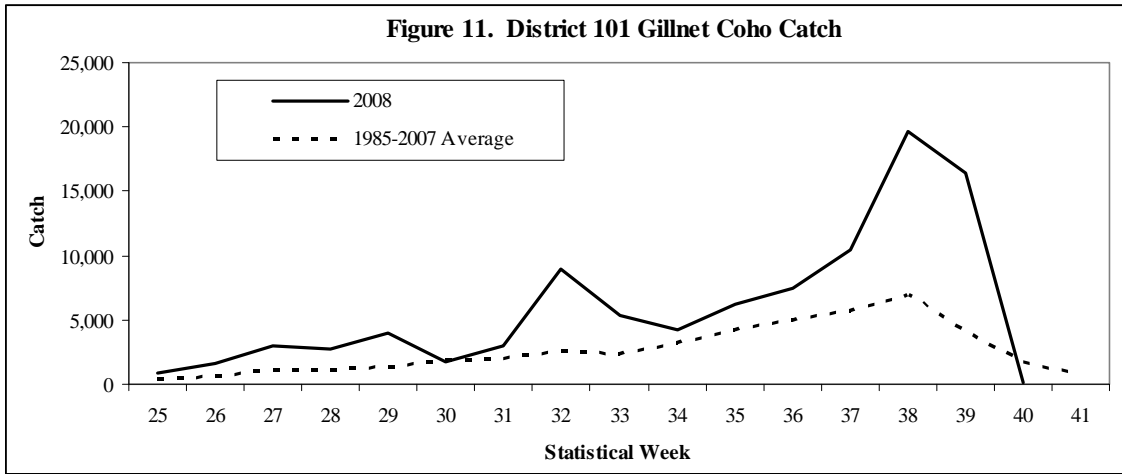
The number of gillnet boats fishing during weekly openings of the District 101 gillnet fishery remained below the 1985-2008 average (Figure 9).



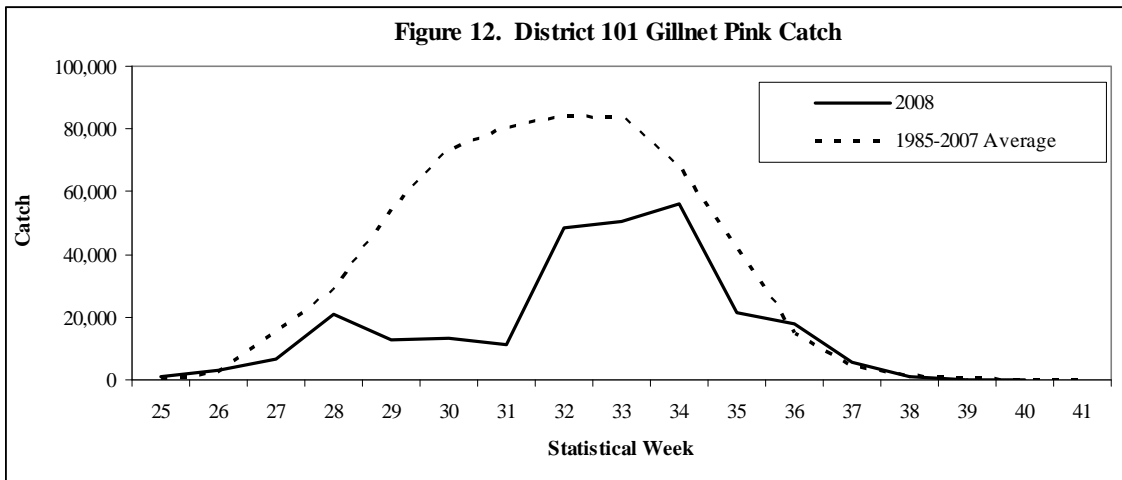
The catch of sockeye salmon was far below treaty period averages throughout the season (Figure 10). The cumulative sockeye harvest prior to the initiation of the Pink Salmon Management Plan in Week 30 was 22,316 fish, or about 65% of the season's total sockeye harvest.



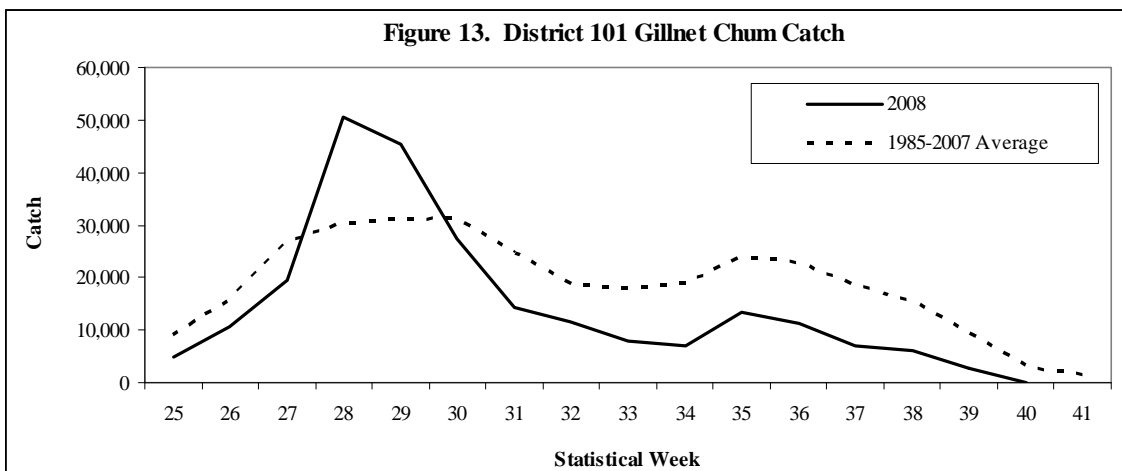
Coho catches were above average throughout the season (Figure 11).



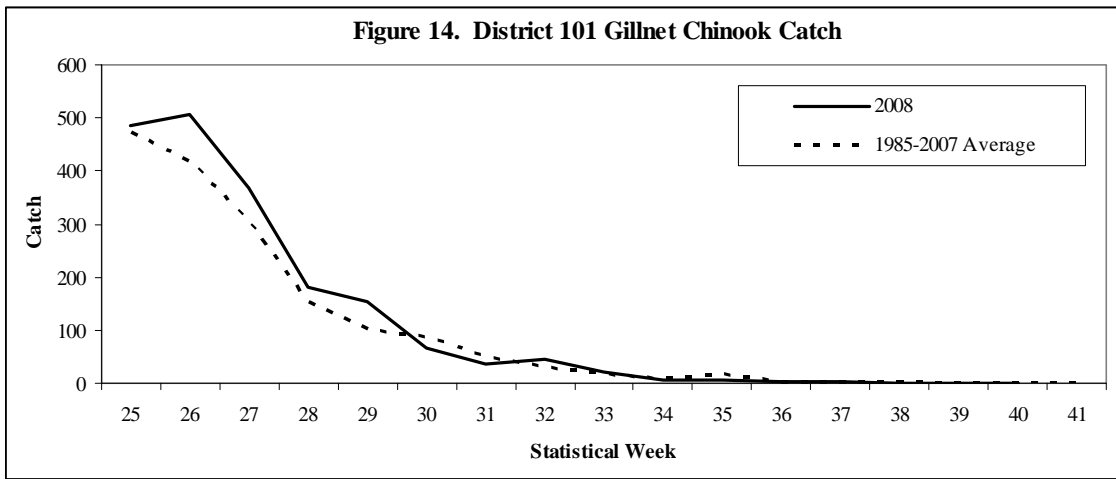
Pink salmon catches, were below the treaty period average throughout the season (Figure 12).



Chum salmon catches were above average in weeks 28 and 29 but below average the remainder of the season (Figure 13).



Chinook salmon catches were close to the treaty period average throughout the season (Figure 14).



Beginning on August 31 (week 36) the fishery was managed on the strength of wild stock fall chum and coho salmon returns. Fall coho catches were above average while fall chum catches were below average during this period.

Pink, Sockeye, and Chum Salmon Escapements

The total 2008 Southeast Alaska pink salmon escapement index of 9.6 million index fish ranked 23rd since 1960—the lowest since 1990, and just over half of the recent 10-year average of 17.1 million. Biological escapement goals are in place for three sub-regions in Southeast Alaska (Table 5). Although escapement goals were reached for Southern Southeast and Northern Southeast Outside sub-regions, runs were extremely poor in Northern Southeast Inside sub-region (inside waters north of Sumner Strait), and the escapement goal was not reached for the first time since 1988. The Southern Southeast sub-region includes all of the area from Sumner Strait south to Dixon Entrance (Districts 1–8). The pink salmon harvest of 13.6 million in the Southern Southeast sub-region was 48% below the recent 10-year average; however, the escapement index value of 6.4 million fell within the escapement goal range of 3.0 to 8.0 million index fish, and escapements indices were within or exceeded management targets for all but District 8 and for 5 of 18 pink salmon stock groups in this sub-region.

Table 5. 2008 Southeast Alaska pink salmon escapement indices and biological escapement goals by sub-region (in millions).

Sub-region	2008 Pink Salmon Index	Biological Escapement Goal ¹	
		Lower Bound	Upper Bound
Southern Southeast	6.4	3.0	8.0
Northern Southeast Inside	1.5	2.5	6.0
Northern Southeast Outside	1.8	0.75	2.50
Total	9.6		

¹ Pink salmon escapement goals were recently adjusted as a result of updates and changes to the pink salmon escapement index.

Sockeye salmon runs throughout Southeast Alaska were poor in 2008. The Hugh Smith Lake adult sockeye escapement was 3,500, which fell short of the lower end of the biological escapement goal

range of 8,000 to 18,000 adult sockeye salmon. The escapement of sockeye salmon into McDonald Lake was estimated to be 21,000 fish, based on the expanded peak foot survey count. This run has declined over the past decade and this is the 7th year in the past 8 that the escapement has been below the escapement goal range of 70,000 to 100,000 sockeye salmon.

Escapement survey information for chum salmon index streams indicated that escapements of summer-run chum salmon throughout Southeast Alaska were very poor in 2008. In southern Southeast Alaska, runs are broken into summer and fall runs. The Southern Southeast chum salmon stock group is composed of an aggregate of 13 summer-run chum salmon streams on the inner islands and mainland of southern Southeast Alaska, from Sumner Strait south to Dixon entrance, with a sustainable escapement goal of 68,000 index spawners (based on the aggregate peak survey to all 13 streams). The index of 13,000 in 2008 was only 15% of the recent 10-year average, and well below the newly recommended escapement goal (Figure 15).

Fall chum salmon runs on Prince of Wales Island appeared to be more robust than summer runs. Fall chum salmon runs are monitored in Cholmondeley Sound at Disappearance and Lagoon creeks, with a newly recommended sustainable escapement goal range of 30,000 to 48,000 index spawners (based on the aggregate peak survey to both streams). The escapement index of 47,000 was right at the 10-year average and well within the escapement goal range (Figure 16).

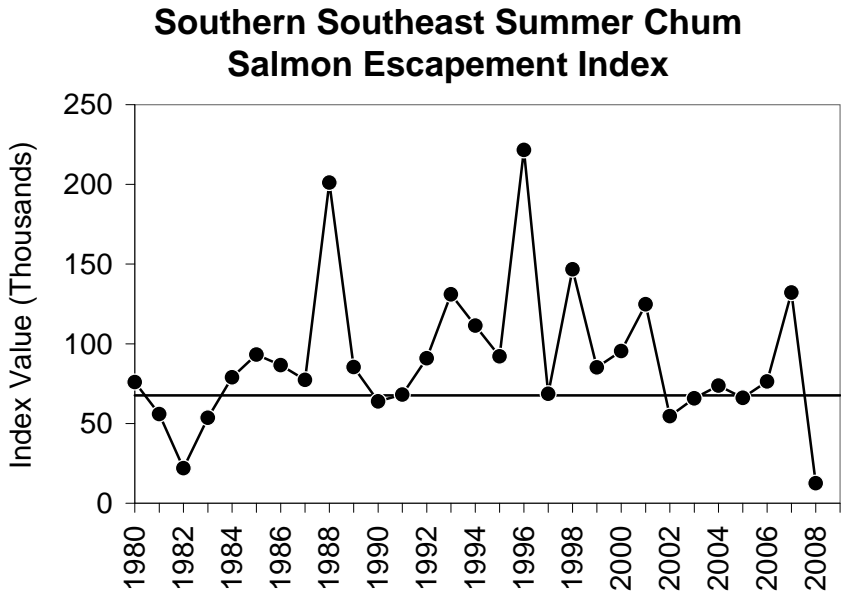


Figure 15. Observed escapement index value by year (solid circles) and recommended sustainable escapement goal threshold of 68,000 index spawners (horizontal line) for wild summer-run chum salmon in the Southern Southeast sub-region, 1980–2008.

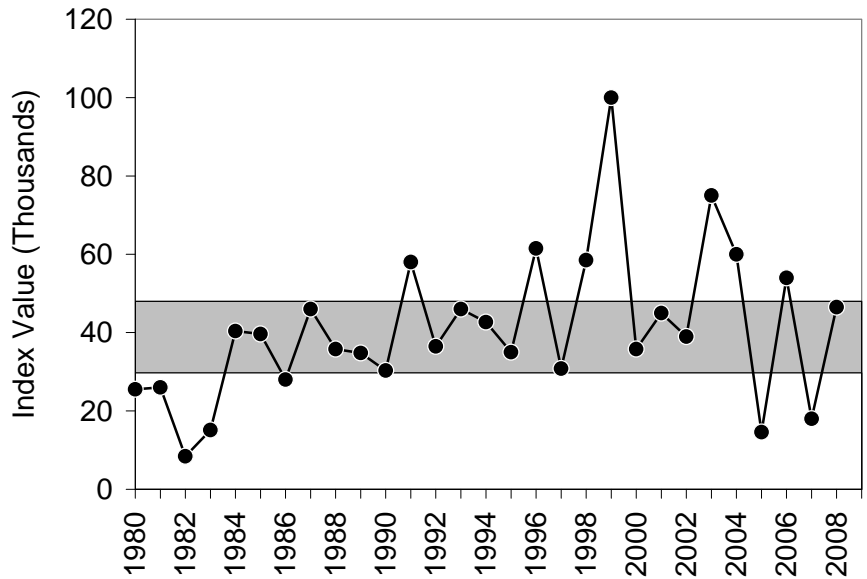


Figure 16.—Observed escapement index value by year (solid circles) and recommended sustainable escapement goal range of 30,000 to 48,000 index spawners (shaded area) for Cholmondeley Sound fall-run chum salmon, 1980–2008.

TRANSBOUNDARY AREA FISHERIES

Stikine River Area Fisheries

The 2008 harvest in the District 106 commercial gillnet fishery included 1,049 Chinook, 30,533 sockeye, 116,074 coho, 90,217 pink, and 102,156 chum salmon (Table 6). District 106 harvests of all species were below the 1998-2007 average (Figures 18-21). Lower catches can be partially attributed to a shift in effort from District 106 into District 108 to target returning Stikine and enhanced Chinook and enhanced chum, as well as effort shifting to other districts in the region with large enhanced chum returns. Overall, fishing time was slightly below the ten-year average in District 106, due mainly to conservation efforts for McDonald Lake sockeye and pink salmon, and effort was well below average (Figures 16 and 17). An estimated 44% of the coho salmon harvest was of Alaskan hatchery origin.

Table 6. Weekly salmon catch in the Alaskan District 106 commercial drift gillnet fisheries, 2008. Catches do not include Blind Slough terminal area harvests.

Week	Start Date	Chinook	Sockeye	Coho	Pink	Chum	Permits	Days	Permit Days
24	8-Jun	179	83	94	0	22	13	2	26
25	15-Jun	177	1,242	2,012	18	438	24	2	48
26	22-Jun	175	3,561	6,538	1,213	3,243	45	4	180
27	29-Jun	318	7,244	10,582	1,918	11,639	65	4	260
28	6-Jul	61	5,219	5,887	2,429	11,622	47	3	141
29	13-Jul	58	6,215	4,664	4,032	18,449	50	2	100
30	20-Jul	39	2,980	2,289	4,162	12,680	39	2	78
31	27-Jul	6	1,231	2,020	7,209	4,251	24	2	48
32	3-Aug	5	1,629	3,447	18,969	5,380	38	2	76
33	10-Aug	3	525	1,768	12,607	2,285	28	2	56
34	17-Aug	1	293	3,010	24,714	2,345	37	2	74
35	24-Aug	3	49	4,950	5,501	2,868	31	2	62
36	31-Aug	0	44	12,565	4,583	7,337	60	3	180
37	7-Sep	15	208	29,283	2,485	11,430	83	4	332
38	14-Sep	7	8	18,730	368	5,334	85	4	340
39	21-Sep	2	2	7,634	9	2,558	51	3	153
40	28-Sep	0	0	601	0	275	14	3	42
Total 2008		1,049	30,533	116,074	90,217	102,156	144	46	2,196
1998-2007 Average		1,211	105,631	160,245	376,923	255,210	164	48	3,248
2008 as % of Average		87%	29%	72%	24%	40%	88%	96%	68%

Figure 16. District 106 Gillnet Days Open

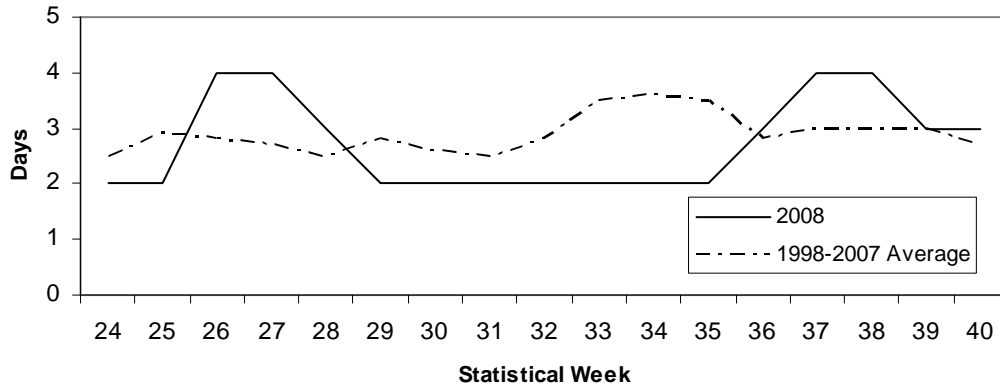


Figure 17. District 106 Gillnet Boats Fishing



Figure 18. District 106 Gillnet Sockeye Catch

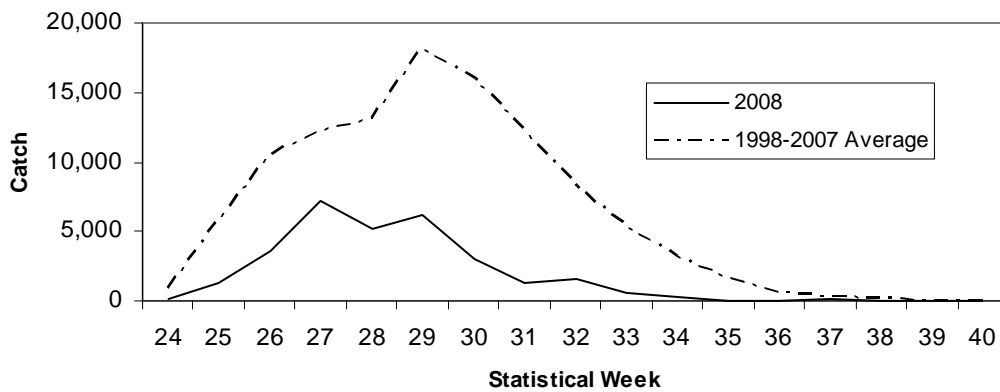


Figure 19. District 106 Gillnet Coho Catch

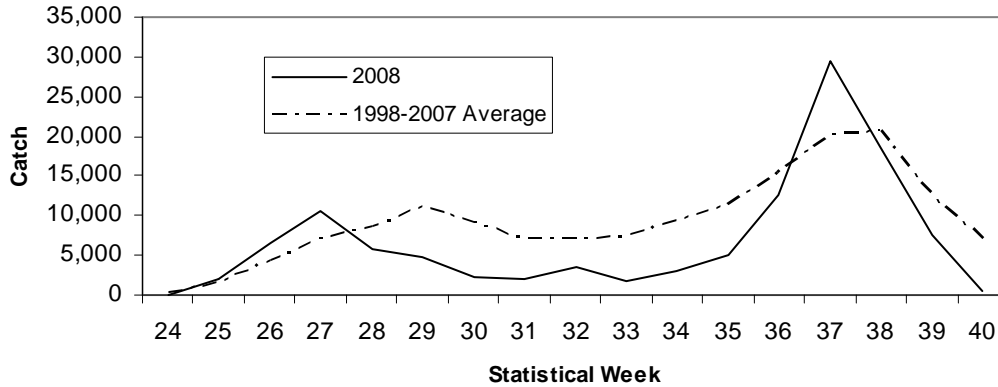


Figure 20. District 106 Gillnet Pink Catch

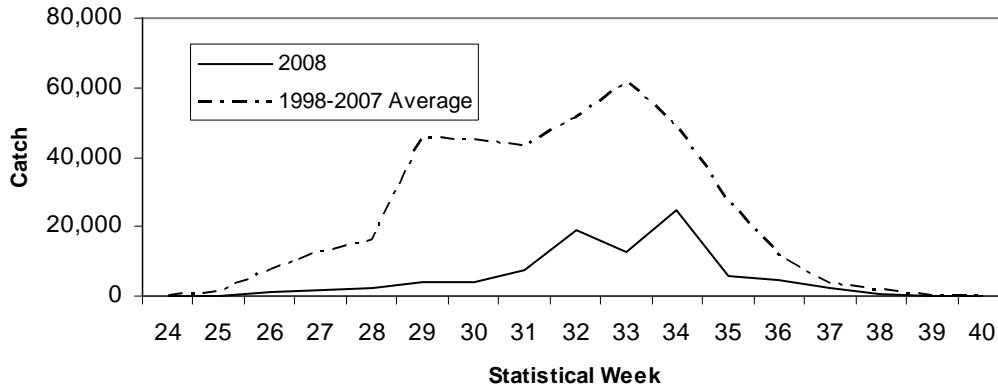
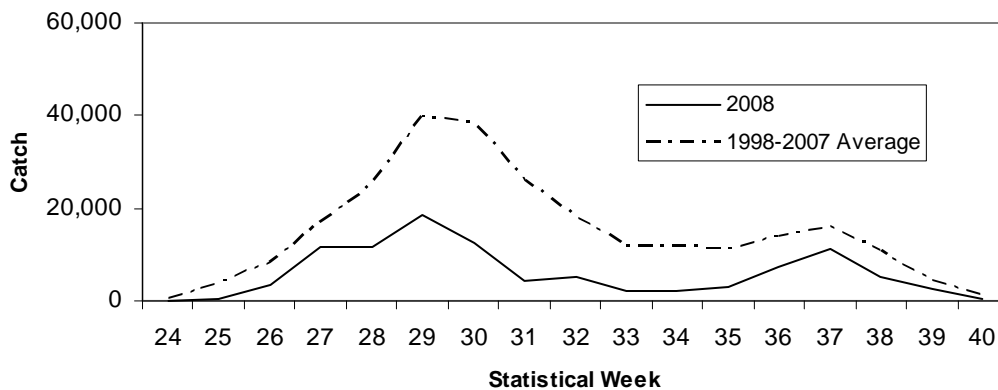


Figure 21. District 106 Gillnet Chum Catch



In the 2008 District 108 fishery, 13,049 Chinook, 35,679 sockeye, 34,479 coho, 18,105 pink, and 81,876 chum salmon were harvested (Table 7). Chinook and coho harvests were above the ten-year average while sockeye, pink, and chum harvests were below average (Figures 24-27). Overall, fishing

time and effort were above-average (Figures 22 and 23). An estimated 27% of the coho salmon harvest was of Alaskan hatchery origin.

The fourth consecutive commercial directed Stikine River Chinook drift gillnet fishery in recent years occurred in statistical weeks 19 through 23 of the 2008 season. The fishery was limited to the waters in District 108, as was the case in the previous three seasons, in order to target adult Stikine Chinook. Three two-day openings then two one-day openings occurred and openings generally began on Monday. One hundred twenty-seven vessels made landings of Chinook over the course of the fishery. The 2008 directed Stikine Chinook salmon gillnet fishery harvested a total of 12,906 large fish through statistical week 29; of this total, 7,269 large fish were treaty fish (i.e. wild Stikine fish).

Table 7. Weekly salmon catch and effort in the Alaskan District 108 commercial drift gillnet fishery, 2008. The permit days are adjusted for boats that fished only the midweek openings. 2008 Chinook % of avg. reflects the directed fishery.

Week	Start Date	Chinook	Sockeye	Coho	Pink	Chum	Permits	Days	Permit Days
19	5-May	320	0	0	0	0	31	2	62
20	12-May	769	0	0	0	1	53	2	106
21	19-May	1,591	1	0	0	0	96	2	192
22	27-May	1,396	0	0	0	0	103	1	103
23	2-Jun	1,538	1	0	0	1	103	1	103
24	8-Jun	1,267	78	1	0	12	70	2	140
25	15-Jun	2,258	2,102	260	0	69	76	2	152
26	22-Jun	2,074	10,604	696	13	873	88	4	352
27	29-Jun	903	6,850	1,495	133	2,905	75	4	300
28	6-Jul	540	6,519	822	220	7,328	65	5	216
29	13-Jul	250	6,747	1,818	1,220	18,848	61	4	166
30	20-Jul	60	1,520	354	706	14,113	38	2	76
31	27-Jul	47	712	1,022	4,686	19,429	52	2	104
32	3-Aug	7	203	726	2,511	12,103	32	2	64
33	10-Aug	4	252	2,281	4,434	2,778	42	2	84
34	17-Aug	0	38	2,961	1,239	669	35	2	70
35	24-Aug	1	37	2,914	2,111	548	36	2	72
36	31-Aug	17	9	4,133	386	444	29	3	87
37	7-Sep	4	6	8,153	440	1,175	43	4	172
38	14-Sep	0	0	4,273	5	357	40	4	160
39	21-Sep	3	0	2,441	1	217	30	3	90
40	28-Sep	0	0	129	0	6	8	3	24
Total 2008		13,049	35,679	34,479	18,105	81,876	170	58	2,329
1998-2007 Average		7,687	45,218	24,708	41,251	96,701	116	51	1,788
2008 as % of Avg.		170%	79%	140%	44%	85%	147%	114%	130%

Figure 22. District 108 Gillnet Days Open

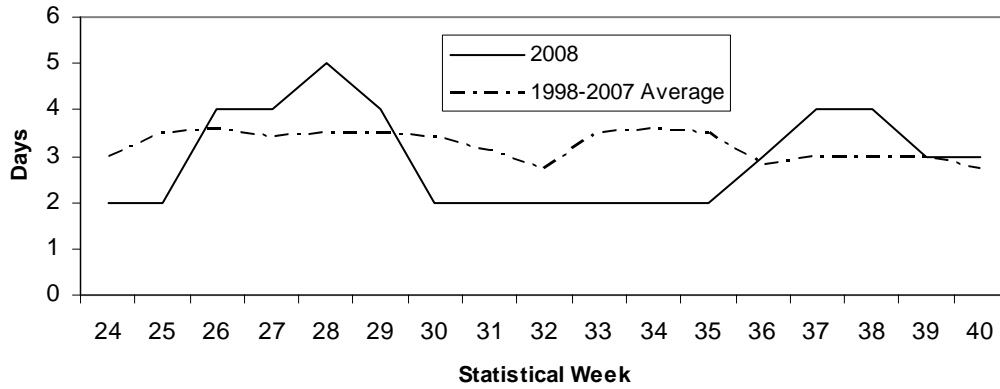


Figure 23. District 108 Gillnet Boats Fishing



Figure 24. District 108 Gillnet Sockeye Catch

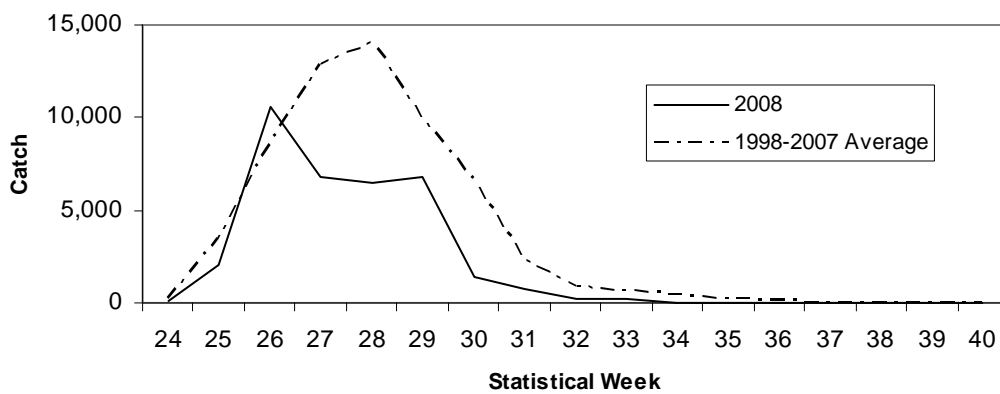


Figure 25. District 108 Gillnet Coho Catch

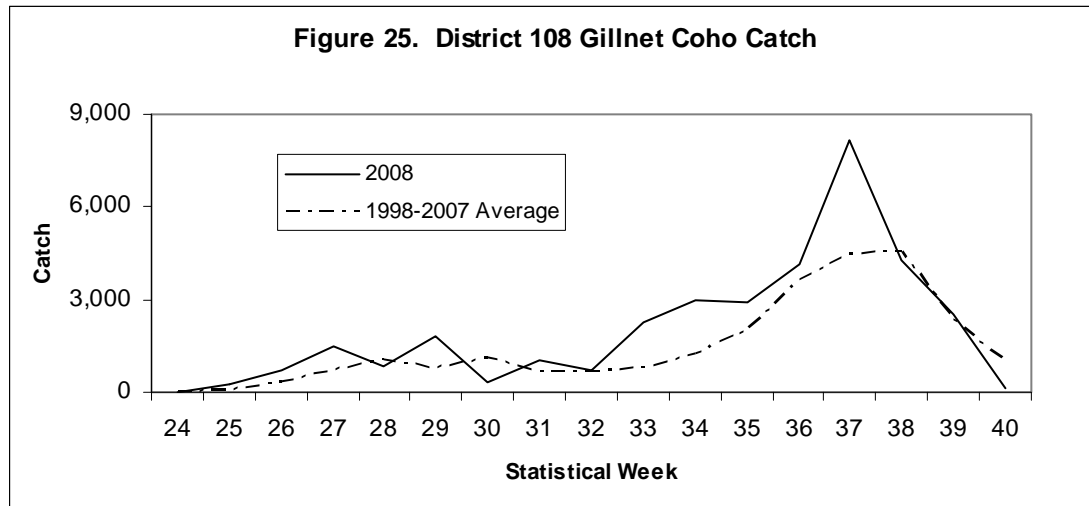


Figure 26. District 108 Gillnet Pink Catch

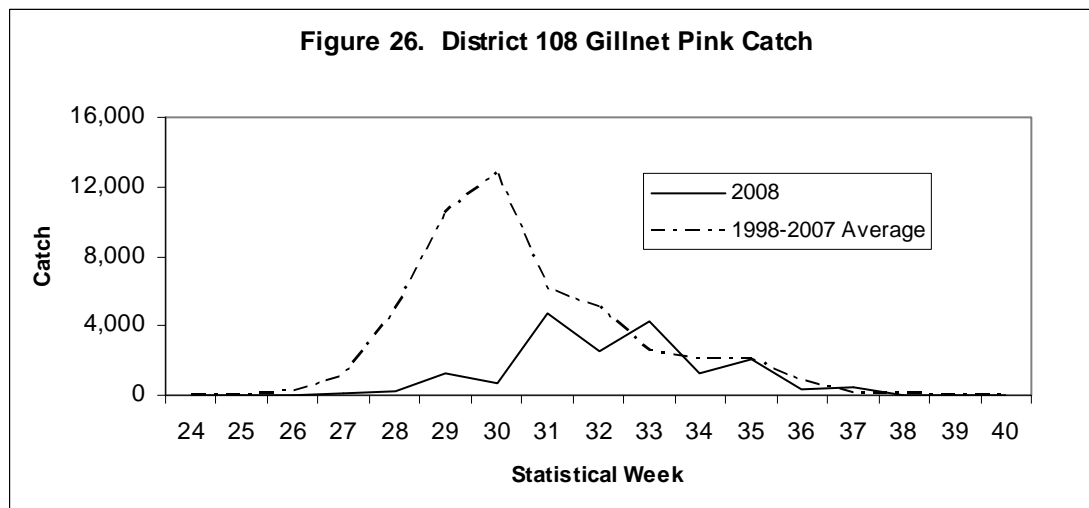
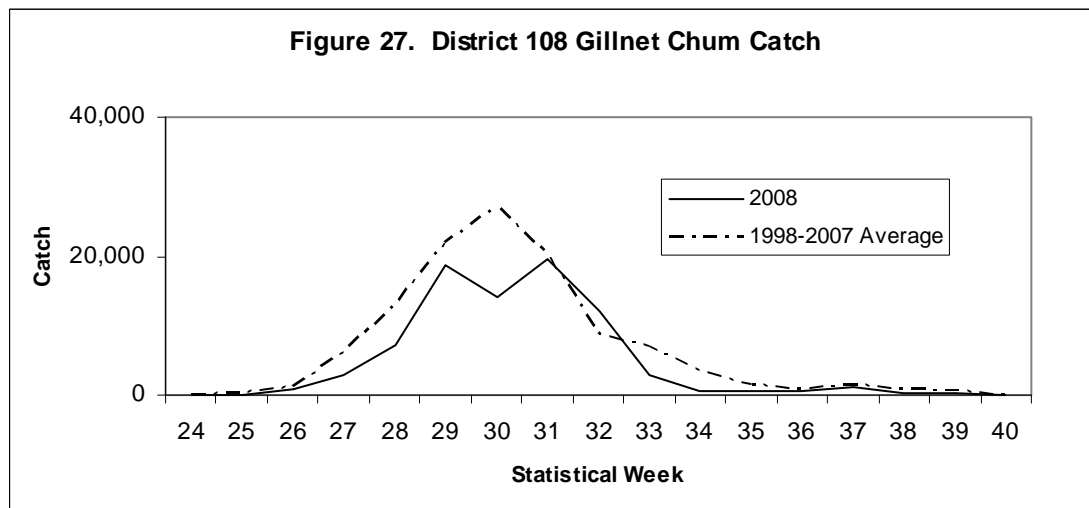


Figure 27. District 108 Gillnet Chum Catch



Harvest sharing of Stikine sockeye stocks is based on inseason abundance forecasts produced by the Stikine Management Model (SMM) (Table 8). The marine and inriver catches of planted Tuya fish were estimated from analysis of otoliths for thermal marks. Egg diameter analysis of inriver catches

was used to estimate the relative abundances of Tahltan and Mainstem fish to Tuya fish in the Stikine River. The historical average weekly stock compositions were used to estimate the harvests of Tahltan and Mainstem Stikine sockeye salmon stocks in marine harvests. Based on these analyses and ratios, the Sumner Strait fishery (subdistricts 106-41 & 42) harvested 10,000 Stikine sockeye salmon, 47% of the total sockeye harvest in those subdistricts. The Clarence Strait fishery (subdistrict 106-30) harvested an estimated 1,000 Stikine sockeye salmon, 9% of the harvest in that subdistrict. It is estimated that the District 108 fishery harvested 30,000 Stikine fish, 84% of the total sockeye harvest in that area. A total of 50 subsistence fishing permits were issued and current estimate of the sockeye subsistence harvest for the Stikine River is 400 fish; the subsistence cap for the river is 600 sockeye salmon. An estimated 41,000 Stikine sockeye salmon were harvested in commercial gillnet fisheries from both districts, representing 62% of the total sockeye catch. Of these Stikine sockeye salmon, an estimated 22,000 fish were produced by the joint U.S./Canada fry-planting projects on the Stikine River.

Preliminary postseason run reconstruction estimates (Table 9) will differ from the inseason management model estimates (Table 8).

Table 8. Weekly forecasts of run size and total allowable catch for Stikine River sockeye salmon as determined inseason by the Stikine Management Model, 2008.

Stat. Week	Start Date	Forecast Run Size	TAC			Cumulative Catches	
			Total	U.S.	Canada	U.S.	Canada
25	15-Jun	228,600	160,643	80,321	80,321	2,128	492
26	22-Jun	228,600	160,643	80,321	80,321	11,242	5,495
27	29-Jun	236,028	172,359	86,180	86,180	23,577	14,368
28	6-Jul	209,495	140,172	70,086	70,086	26,690	21,648
29	13-Jul	185,719	118,220	59,110	59,110	34,356	24,560
30	20-Jul	185,819	118,040	59,020	59,020	31,266	26,606
31	27-Jul	171,091	101,686	50,843	50,843	36,916	29,858
32	3-Aug	173,005	104,050	52,025	52,025	36,986	29,858
33	10-Aug	170,514	101,817	50,908	50,908	38,356	33,213
34	17-Aug	169,743	101,030	50,515	50,515		
Preliminary end-of-season estimate		108,840	34,558	17,279	17,279	40,797	33,612

^a Does not include test fishery catches

Table 9. Preliminary post season Stikine River sockeye salmon run reconstruction, 2008.

	Tahltan	Mainstem	Tuya	Total	Tahltan	
				Stikine	Wild	Hatchery
Escapement ^a	10,516	14,496	8,271	33,284	6,257	4,259
ESSR Catch ^b	0		1,921	1,921		
Biological Samples	100		290	390	56	44
Broodstock	2,364			2,364	1,324	1,040
Natural Spawning Excess ^c	8,052	14,496		22,548	4,877	3,175
			6,060	6,060		
Canadian Harvest						
FSC fishery	2,459	423	1,590	4,473	1,355	1,104
Upper Commercial	293	43	169	505	160	133
Lower Commercial	13,926	4,007	10,701	28,634	7,741	6,185
Total	16,678	4,474	12,461	33,612	9,256	7,421
% Harvest	48.9%	34.4%	45.7%			
Test Fishery Catch	297	599	215	1,111	174	124
Inriver Run	27,491	19,569	20,947	68,007	15,687	11,803
U.S. Harvest ^a						
106-41&42	5,034	331	4,278	9,643	2,970	2,064
106-30	404	253	181	838	364	40
108	11,803	7,885	10,221	29,909	6,345	5,458
Subsistence	198	57	152	407	110	88
Total	17,439	8,526	14,832	40,797	9,789	7,650
% Harvest	51.1%	65.6%	54.3%			
Test Fishery Catch	0	0	0	0	0	0
Total Run	44,930	28,095	35,779	108,804	25,477	19,453
Escapement Goal	24,000	30,000	0			
Terminal Excess ^d			19,349			
Total TAC	20,632	0	16,430	34,558		
Total Harveste	34,414	13,599	29,429	77,441		
Canada TAC	10,316	0	8,215	17,279		
Actual Catch ^{fg}	16,678	4,474	12,461	33,612		
% of total TAC	161.7%			194.5%		
U.S. TAC	10,316	0	8,215	17,279		
Actual Catch ^{fg}	17,439	8,526	14,832	40,797		
% of total TAC	169.0%			236.1%		

^a Escapement into terminal and spawning areas from traditional fisheries.

^b Catch allowed in terminal areas under the Excess Salmon to Spawning Requirement license.

^c Fish returning to the Tuya system are not able to access the lake where they originated due to velocity barriers.

^d The number of Tuya fish that should be passed through traditional fisheries in order to harvest the Tuya stock at the same rate as the Tahltan stock to ensure adequate spawning escapement for Tahltan fish.

^e Includes traditional, ESSR, and test fishery catches.

^f Does not include ESSR or test fishery catches.

^g U.S. harvest estimate differs from Joint Interception Committee estimate because no estimates are made for catches other than in the listed fisheries.

A number of stocks are known to contribute to the Wrangell/Petersburg area sport Chinook salmon fishery, including those from the Taku, Unuk, Chickamin, and King Salmon rivers as well as local hatchery stocks. But the major contributor of large, wild mature fish is believed to be the Stikine

River. Preliminary estimates indicate that approximately 1,350 Chinook harvested in the Wrangell/Petersburg sport fishery were of Stikine River origin during 2008 (based on coded wire tag analysis and maturity data collected from onsite surveys).

Taku River Area Fisheries

The traditional 2008 District 111 commercial drift gillnet fishery salmon harvest totaled 2,193 Chinook, 116,693 sockeye, 37,349 coho, 90,162 pink, and 774,095 chum salmon (Table 10). Harvest of Chinook, coho, pink and chum salmon was 126%, 130%, 75% and 240% of the ten-year (1998-2007) traditional sockeye fishery period (week 25-41) averages, respectively. The harvest of sockeye salmon was 75% of the ten-year average. Hatchery stocks contributed significantly to the harvest of both sockeye and chum salmon, and minor numbers to the harvest of other species.

Table 10. Weekly salmon harvest in the Alaskan District 111 traditional commercial drift gillnet fishery, 2008.

Stat. Week	Start Date	Chinook ^a	Sockeye	Coho	Pink	Chum	Boats	Days ^b	Boat Days	
25	15-Jun	779	4,030	5	0	1,469	44	2	88	
26	22-Jun	472	5,247	18	8	12,449	59	3	177	
27	29-Jun	338	6,414	121	351	113,896	77	4	308	
28	6-Jul	224	5,511	318	2,548	167,795	116	3	348	
29	13-Jul	62	20,576	300	4,261	169,915	112	2	224	
30	20-Jul	110	30,152	1,251	9,392	181,961	135	3	405	
31	27-Jul	66	27,190	2,002	18,277	81,433	141	3	423	
32	3-Aug	27	12,218	2,881	38,510	33,596	114	3	342	
33	10-Aug	26	2,819	3,453	13,349	6,198	84	2	168	
34	17-Aug	38	1,652	4,301	3,056	2,167	51	3	153	
35	24-Aug	3	451	4,999	367	1,087	32	3	96	
36	31-Aug	27	237	6,961	42	988	47	3	141	
37	7-Sep	17	86	6,486	1	989	39	3	117	
38	14-Sep	3	104	1,893	0	101	24	3	72	
39	21-Sep	0	5	2,193	0	51	13	3	36	
40	28-Sep	0	0	154	0	0	4	3	12	
41	5-Oct	Confidential information, less than 3 boats fishing.							3	
Total		2,193	116,693	37,349	90,162	774,095	181	49	3,112	
1998-2007 Average ^c		1,740	156,349	28,711	120,942	322,797	165	57	3,370	
2007 as % of 10 year average		126%	75%	130%	75%	240%	110%	86%	92%	

^a Chinook salmon catch includes Harvest Code 411 (jacks).

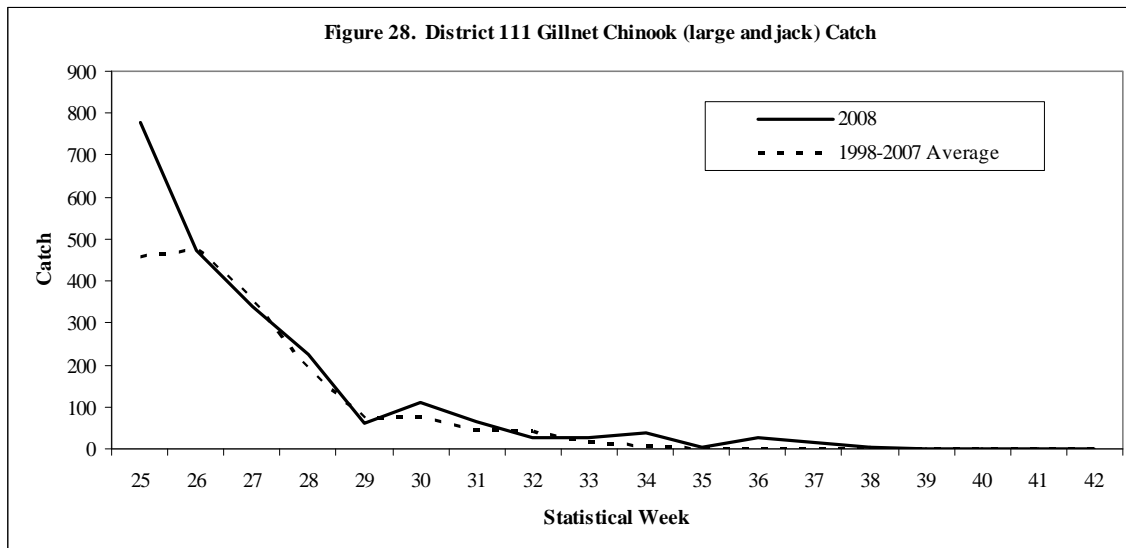
^b The days open listed in this table reflect open fishing periods for all waters of District 11 except Speel Arm THA (111-33).

^c The 1998-2007 averages are for the traditional sockeye fishery period (week 25-41) only.

The Speel Arm Terminal Harvest Area (THA) was not open to commercial fishing in 2008.

The District 111 directed Chinook salmon fisheries in May and early June were not open in 2008 due to the low pre-season forecast and subsequent inseason abundance estimates that did not provide any US Allowed Catch (AC). The traditional District 111 gillnet fishery on all species opened Sunday, June 15 (week 25).

The total Chinook salmon harvest in the 2008 traditional District 111 drift gillnet fishery was 2,193 fish. Chinook harvests for weeks 25-41 were 126% of the 1,744 fish ten year average for this period. Preliminary coded wire tag (CWT) analysis indicate Alaska hatcheries contributed approximately 930 fish, or 42% of the total 2008 District 111 Chinook salmon harvest.



In the 2008 District 111 traditional drift gillnet fishery approximately 83% of the Chinook salmon (including jacks) were harvested from Taku Inlet, and 17% were harvested from Stephens Passage. The preliminary 2008 estimate of large Taku River Chinook salmon escapement is 21,300 fish, 56% of the ten-year (1998-2007) average of 38,002. The current escapement goal range is from 30,000 to 55,000 large Chinook salmon.

The total 2008 Taku River sockeye salmon run was estimated at 170,550 fish (Table 11). Based on the escapement goal midpoint of 75,000 wild Taku River sockeye, the TAC was 95,550 fish. The U.S. TAC was 72,380 Taku River sockeye (75% of the TAC). It is estimated that the total U.S. harvest of Taku River sockeye salmon was 80,656 fish, 84% of the TAC. Sockeye salmon produced from a joint U.S./Canada fry-planting program at Tatsamenie Lake contributed an estimated 10,140 fish, or 12.8% of the total US sockeye catch. An estimated 31,800 Snettisham Hatchery sockeye salmon were harvested in common property traditional fisheries in District 111.

The preliminary 2008 estimated above-border in-river wild Taku River sockeye run, based on mark-recapture estimates at Canyon Island, was 80,769 wild sockeye plus 9,125 salmon from Tatsamenie fry plants, for a total of 89,894 sockeye salmon. Subtracting the Canadian catch of 17,437 wild sockeye salmon (in addition to an estimated harvest of 1,807 planted Tatsamenie fish) the escapement was 63,400 wild fish, with an additional 7,300 enhanced fish for a total of 70,650 sockeye escaped past all fisheries, approximately equal to the lower bound of the 71,000 - 80,000 fish escapement goal range. Because a normal test fishery was not conducted during weeks 34-42 for second event sampling, the above border sockeye contribution for this time period was estimated from Canyon Island fish wheel CPUE data. Preliminary 2008 Taku River sockeye escapements for enumerated systems were approximately: Trapper Lake 3,818; Kuthai Lake 1,543; Tatsamenie Lake 8,976, and King Salmon Lake 894 fish. Escapements of sockeye salmon to Port Snettisham systems were poor, with 1,763 counted through a weir at Speel Lake, below the lower bound of the 4,000-13,000 fish escapement goal. The Crescent Lake sonar reported a net upstream count of approximately 1,903 fish,

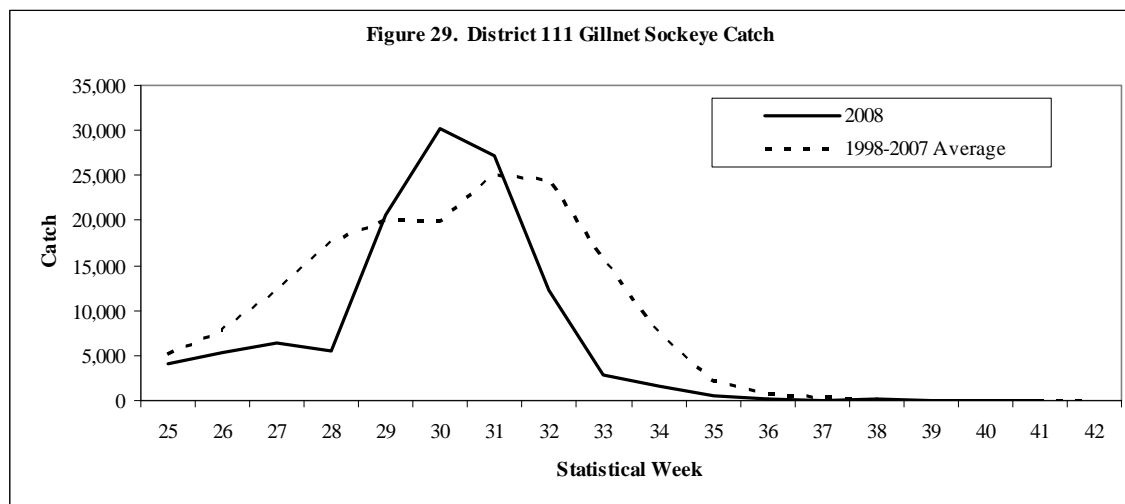
which was not separable by species. It is known that all species of Pacific salmon do enter Crescent Lake; however sockeye is the predominant species.

Table 11. Preliminary Taku sockeye salmon run reconstruction, 2008. {Estimates do not include spawning escapements below the U.S./Canada border.}

Estimated Taku Inriver Run	89,894
Estimated U.S. Catch Taku Fish	80,656
Total Run	170,550
Escapement Goal	75,000
Escapement	70,650
TAC	95,550
U.S. TAC	72,380
U.S. Harvest Share (catch/total TAC)	0.844
Canada TAC	23,170
from .18 of total TAC	23,170
from .20 of inriver run >100,000	0
Estimated Canada Catch	19,244
Canada Harvest Share (catch/total TAC)	0.201

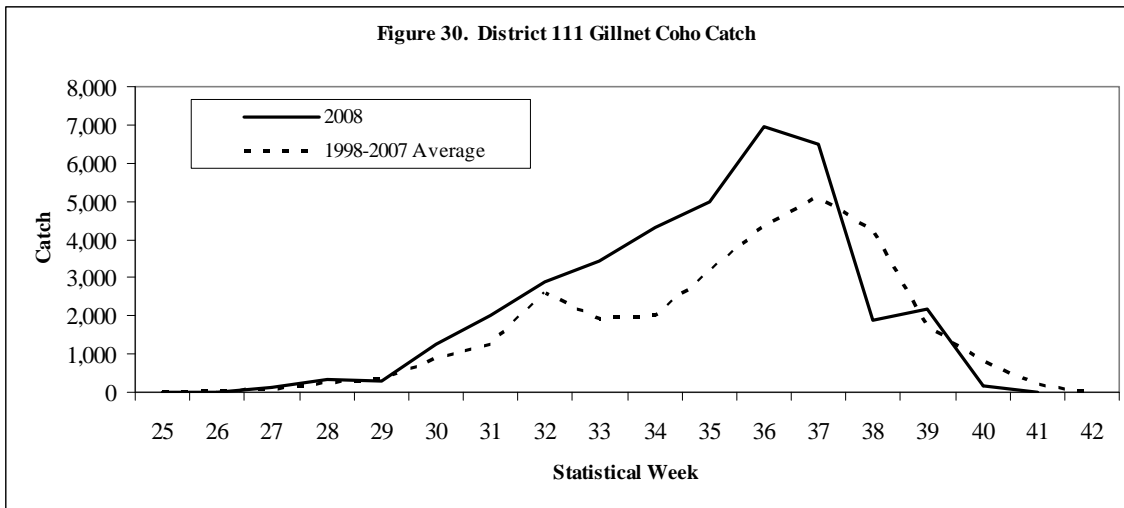
^a United States and Canada TAC computations based on harvest sharing arrangement described in Annex IV, Chapter 1, (3)(b)(1)(i).

The 2008 sockeye catch in the District 111 drift gillnet fishery was 116,693 which is 75% of the 1998-2007 average. Sockeye catches were below average throughout the season (Figure 29).

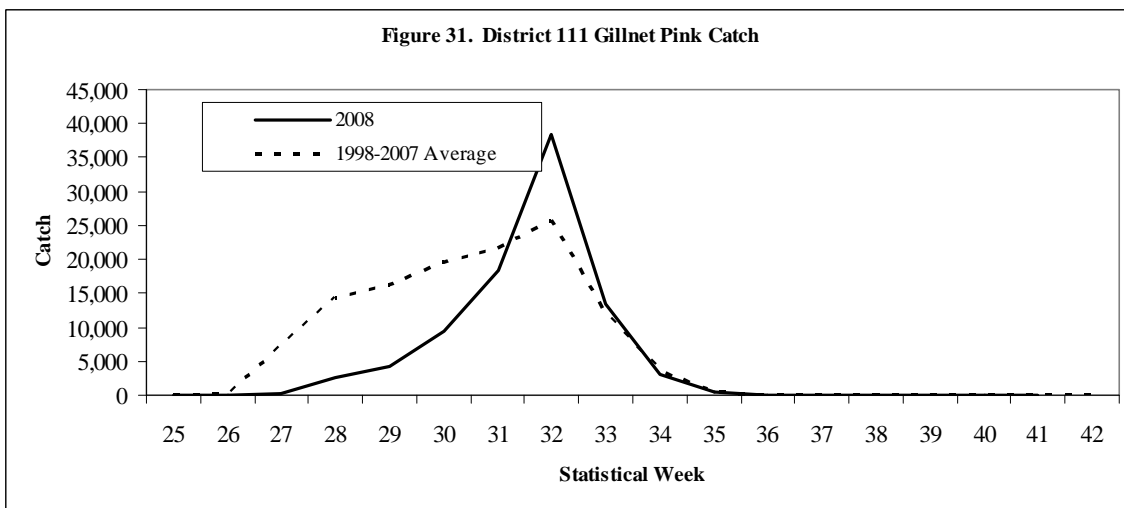


Coho stocks harvested in District 111 include runs to the Taku River, Port Snettisham, Stephens Passage, and local Juneau area streams as well as Alaskan hatcheries. The 2008 coho harvest of 37,349 fish was 130% of the 10-year (1998-2007) average (Figure 30). Approximately 80% of the coho were harvested in Taku Inlet (equaling the ten-year average of 81%); and 20% were harvested from Stephens Passage. Alaskan hatchery coho salmon contributed 2,450 fish or 7% of the District 111 harvest. Weekly coho harvests were generally above average throughout the season with the exception of weeks 26, 45, 40, and 41. The week 36 harvest of 6,961 fish was the peak week of coho harvest for the 2008 drift gillnet fishery. For most of the season, weekly estimates of Taku River coho abundance indicated a below average run size. The inriver abundance estimate of coho salmon above Canyon Island was 89,350, 79% of the ten-year (1998-2007) average of 113,300. The cumulative

Canadian coho harvest was approximately 3,770 fish. The coho escapement for the Taku River was estimated to be approximately 85,600 fish, surpassing the minimum in-river goal of 38,000.

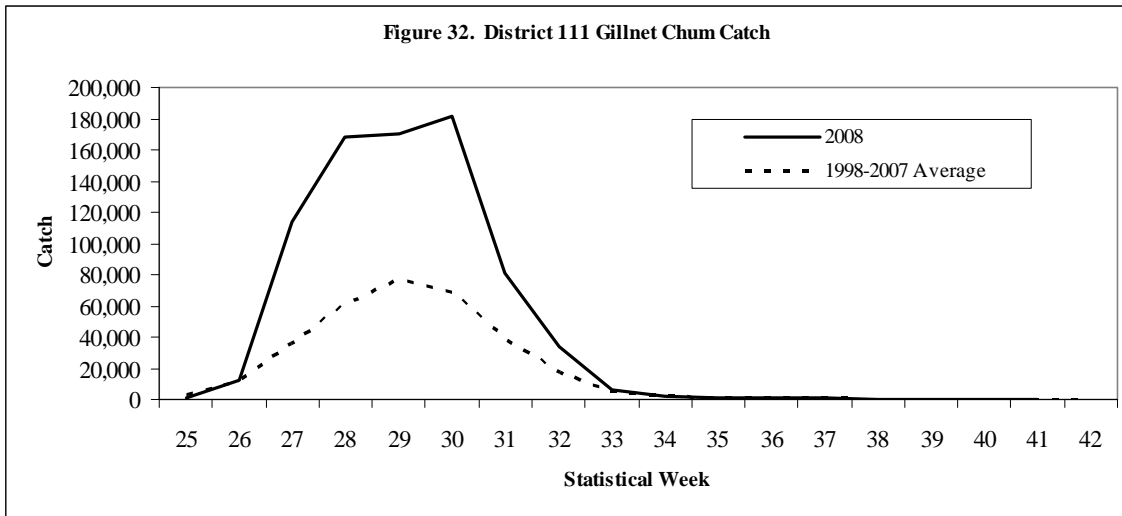


The District 111 pink salmon harvest of 90,162 fish was 75% of the ten-year (1998-2007) average (Figure 31). The 2008 pink salmon escapement to the Taku River was unknown; however, the number of pink salmon passing through the fish wheels at Canyon Island was used as an index of escapement. The 2006 (parent year) Canyon Island pink salmon fish wheel catch was 21,725 fish. The 2008 Canyon Island pink salmon fish wheel catch of 4,704 was 22% of the 1986-2006 even-year average.



The catch total of 774,095 chum salmon was 240% of the ten-year (1998-2007) average, and was comprised almost entirely of summer run fish (99%) (Figure 32). The summer chum run is considered to last through mid-August (week 33) and is comprised mostly of domestic hatchery fish with small numbers of wild stock fish contributing. Chum salmon returning both to DIPAC hatcheries in Gastineau Channel and to the DIPAC remote release site at Limestone Inlet contributed a major portion of the harvest, but quantitative contribution estimates are not available. Approximately 65% of the District 111 chum harvest was made in Taku Inlet, and 35% in Stephens Passage. The harvest of 5,383 fall chum salmon (i.e. chum salmon caught after week 33) was 131% of the ten-year (1998-2007) average. Most of these chums are probably of wild Taku and Whiting River origin. Escapement numbers to the Taku River chum are unknown; however, the numbers of fall chum passing through the

fish wheels at Canyon Island were used as an index of escapement. The index number for 2008, 330 chum salmon is 105% of the 1998-2007 average.



Several other fisheries in the Juneau area harvested Taku River salmon stocks in 2008. Personal use permits were used to harvest an estimated 1,500 Taku River sockeye salmon. A number of stocks are known to contribute to the Juneau area sport fishery, including those from the Taku, Chilkat, and King Salmon rivers, and local hatchery stocks, but the major contributor of large, wild mature fish was believed to be the Taku River. Preliminary estimates indicate that approximately 1,530 of the Chinook harvested in the Juneau sport fishery were of Taku River origin (based on coded wire tag analysis and maturity data from onsite survey data).

TRANSBOUNDARY RIVER JOINT ENHANCEMENT ACTIVITIES

The transport of sockeye fry back to the Canadian lakes took place between May 28 and June 16, 2008. This season saw a very late ice-out on the Canadian lakes and had many weather delays. Close to 6 million fry were released in the Canadian Tahltan, Tuya, Tatsamenie and Trapper Lakes. Fry transported were released directly from the aircraft into the lakes with one exception. An extended rearing project in net pens at Tatsamenie Lake was funded by the Pacific Salmon Commission Northern Fund. There were 100,000 fry which were to be held until August with an expected growth to 4 grams. Unfortunately all fry were lost to IHN Virus.

Table 12 Summary of numbers and survival rates of brood year 2007 sockeye salmon fry released May-June 2008. Fish were raised at Snettisham Hatchery as part of the Transboundary River Salmon Enhancement Project.

Brood Stock	Release Site	Number of Trips	Survival Rate to Eyed Stage	Survival Rate to Release	Number Released
Tahltan	Tahltan	3	75.6%	69.7%	1,536,887
Tahltan	Tuya	3	85.6%	83.0%	1,539,675
Tatsamenie	Tatsamenie	6	88.5%	68.7%	2,522,024
Trapper	Little Trapper	1	60.4%	39.3%	353,175
Average/Totals		13			5,951,761

Brood Year 2008 Activities

Brood year 2008 TBR egg takes were initiated on September 7th at Tahltan Lake, and September 22nd at Tatsamenie Lake. An estimated total of 8.1 million green eggs were collected from the two donor lakes. Due to lowered adult escapement into Little Trapper Lake, only 100,000 eggs were collected from this stock, those eggs were planted in Tunjony Creek, a tributary of Big Trapper Lake.

Tahltan Lake eggtakes were completed on September 25th with an estimated 3.16 million eggs. The receipt of one lot of Tahltan eggs was delayed by 2 days, and two others by 1 day, due to unfavorable weather conditions. Tatsamenie Lake eggtakes were completed on October 23rd with an estimated 5.0 million eggs. The receipt of one lot of Tatsamenie eggs was delayed by 2 days, and three others by 1 day, also due to unfavorable weather conditions.

During the 2008 season the ADFG thermal mark lab processed 14,037 sockeye otoliths collected by ADFG and DFO staff as part of the U.S./Canada fry-planting evaluation program. These collections came from commercial and test fisheries in U.S. waters and in Canadian fisheries on the Taku and Stikine Rivers over a 14-week period. In addition, several escapement samples were examined. The laboratory provided estimates on hatchery contributions for almost 90 distinct sampling collections. Estimates of the percentage of hatchery fish contributed to commercial fishery catches were provided to ADF&G and DFO fishery managers 24 to 48 hours after samples arrived at the lab.

Alsek River Area Fisheries

Although harvest sharing arrangements of Alsek salmon stocks between Canada and the U.S. have not been specified, Annex IV of the Pacific Salmon Treaty does call for a cooperative attempt to rebuild depressed Chinook and early-run sockeye stocks. Preseason expectations were for slightly above average returns of sockeye and Chinook salmon. These expectations were based on parent-year escapements to the Klukshu River. The Alsek River commercial fishery opened on the first Sunday in June, statistical week 23 (June 1). The initial opening remained at 24 hours. Sockeye salmon CPUE remained very poor throughout the season, and fishing times remained at one day for the first eight weeks of the season. The Alsek was closed to commercial fishing for statistical weeks 31 and 32 as a conservation measure, and when it reopened during statistical week 33 fishing time remained at one day. Coho salmon are targeted from mid-August on and effort becomes minimal. Fishing times remained at three days per week for the entire coho salmon season. The Alsek River remained open through the second week in October, and the river was not fished during the last week of the season.

The 2008 Dry Bay commercial set-gillnet fishery harvested 128 Chinook, 2,870 sockeye, and 2,668 coho salmon. No pink and 2 chum salmon were harvested. A test fishery was conducted on the Alsek River for Chinook salmon in 2008, and that fishery produced another 465 Chinook and 55 sockeye salmon, for a total harvest of 593 Chinook and 2,870 sockeye salmon (Table 13). The Chinook salmon harvest was slightly above the 1998-2007 average, the sockeye salmon harvest was below average. The coho salmon harvest was slightly below average. Very little effort was recorded during the coho season due to market conditions, although the coho salmon harvest was the highest recorded in the past five years. The number of fishing days was 33. The total effort expended in the fishery was 201 boat-days, which was below average.

Table 13. Weekly catch and effort in the U.S. commercial fishery in the Alsek River, 2008.

Statistical Week	Start Date	Catch						Effort Permit		
		Chinook	Sockeye	Coho	Pink	Chum	Permits	Days	Days	
23	1-Jun	99	11	0	0	0	13	1	13	
24	8-Jun	142	83	0	0	0	13	1	10	
25	15-Jun	195	229	0	0	0	10	1	10	
26	22-Jun	45	238	0	0	0	13	1	13	
27	29-Jul	15	761	0	0	0	14	1	14	
28	6-Jul	1	521	0	0	0	14	1	14	
29	13-Jul	1	785	0	0	0	13	1	13	
30	20-Jul	1	107	0	0	0	9	1	9	
31-32	27-Jul	CLOSED								0
33	10-Aug	0	34	11	0	0	3	1	3	
34	27-Sep	0	21	351	0	0	6	3	18	
35	24-Aug	0	74	428	0	2	6	3	18	
36	31-Aug	0	2	582	0	0	6	3	18	
37	7-Sep	0	0	590	0	0	4	3	12	
38-41	14-Sep	0	1	706	0	0	3	12	36	
Total ^a		593	2,870	2,668	0	2	20	33	201	
1998-2007 Average		574	14,559	3,268	2	20	21	53	304	
2008 as % of Avg.		103%	20%	82%	0%	10%	95%	62%	66%	

^aTotals include fish taken in test fishery prior to statistical week 24.

SOUTHEAST ALASKA CHINOOK SALMON FISHERY

All Gear Harvest

The 2008 postseason Chinook salmon target harvest level was determined using the preseason abundance index of 1.07 generated with the CTC model calibration #0807. The corresponding target harvest of 169,950 was identified using Table 1 of Chapter 3. The preliminary estimated Chinook salmon harvest by all Southeast Alaska fisheries was 236,439 fish (Table 14). The treaty harvest (total minus the add-on and terminal exclusion harvest) was 164,108 fish, 3.4% below the target harvest of 169,950.

Table 14. Chinook all-gear harvests¹ in Southeast Alaska, 1987 to 2008, and deviation from the ceiling for years for which there were ceilings. Harvests are in thousands.

Year	Total Harvest	Add-on and Exclusion Harvest	Target Treaty Harvest	Treaty Harvest	Deviation Number	Deviation Percent
1987	282.4	17.1	263.0	265.3	2.3	0.9%
1988	279.3	22.5	263.0	256.8	-7.8	-3.0%
1989	291.0	21.5	263.0	269.5	6.5	2.5%
1990	366.9	45.9	302.0	321.0	19.0	6.3%
1991	359.5	61.5	273.0	298.0	25.0	9.2%
1992	258.8	36.8	227.4	222.0	-5.4	-2.4%
1993	304.1	32.9	263.0	271.2	8.2	3.1%
1994	264.4	29.2	240.0	235.2	-4.8	-2.0%
1995	235.7	58.8		176.9		
1996	236.3	81.3		155.0		
1997	343.0	56.3		286.7		
1998	270.6	27.4	260.0	243.2	-16.8	-6.5%
1999	251.0	52.2	184.2	198.8	14.6	7.9%
2000	263.3	76.8	178.5	186.5	8.0	4.5%
2001	265.7	78.8	250.3	186.9	-63.4	-25.3%
2002	426.5	69.4	371.9	357.1	-14.8	-4.0%
2003	443.2	59.9	439.6	380.1	-56.3	-12.8%
2004	503.0	82.2	418.3	428.8	2.5	0.6%
2005	502.8	106.1	416.4	386.7	9.2	2.4%
2006	443.9	80.8	354.5	354.8	8.5	2.4%
2007	410.2	79.7 ²	259.2	317.2	71.2	27.5%
2008 ¹	236.4	72.3 ²	170.0	164.1	-5.8	-3.4%

¹ The actual target harvest and deviation cannot be calculated until the CTC completes the postseason calibration.

² The 2007 and 2008 exclusion harvests are still preliminary pending genetic stock composition estimates of the District 108 fishery

Troll Fishery

The winter troll fishery harvested 21,824 Chinook salmon from October 11, 2007 through April 30, 2008. A total of 2,865 fish were from Alaska hatcheries with 2,455 fish counting toward the Alaska hatchery add-on.

Spring fisheries were conducted prior to the July general summer opening. The spring troll fisheries are designed to increase the harvest of Alaskan hatchery-produced Chinook salmon and occur primarily in inside waters near hatchery release sites or along migration routes of returning hatchery fish. Terminal fisheries are a portion of the spring fisheries and occur directly in front of hatcheries or at remote release sites. While there is no ceiling on the number of Chinook salmon harvested in the spring fisheries, the take of Treaty Chinook salmon is limited according to the percentage of the Alaskan hatchery fish taken in the fishery. The troll harvests in 2008 were: 4,994 fish in the terminal fisheries, 36,620 fish in the general spring fisheries and a preliminary estimate of 1,295 in the Stikine exclusion fisheries. A total of 48% (17,680) of the Chinook salmon landed in these fisheries were from Alaska hatcheries of which 15,150 counted toward the Alaska hatchery add-on.

In the 2008 summer troll season there were two Chinook salmon retention periods: July 1-5 and August 16-21. The fishery harvested 88,886 Chinook salmon of which 3,873 fish (4.4%) were from Alaska hatcheries (3,319) counting toward the Alaska hatchery add-on).

The total harvest for the troll fishery in the 2008 accounting year was 151,906 Chinook salmon, with 125,772 counting as Treaty harvest.

Net Fisheries

With the exception of directed gillnet harvests of Chinook in SEAK terminal area regulatory districts 108 and 111 targeting Chinook as provided in the transboundary river agreement, harvests of Chinook salmon in the net fisheries are primarily incidental to the harvest of other species and only constituted a small fraction (<1.0%) of the total net harvest of all species. The directed District 108 Stikine Chinook fisheries were conducted in 2008, but the District 111 Taku Chinook fisheries did not occur due to low returns. In 2008, the net fisheries harvested approximately 46,162 Chinook salmon of which approximately 12,674 counted as Treaty harvest. These numbers are very preliminary at this time due to the ongoing genetic stock composition analysis that has not yet been completed.

Recreational Fisheries

The 2008 recreational fishery had an estimated preliminary harvest of 38,371 Chinook salmon of which 25,662 counted as Treaty harvest. The final total and Treaty harvest in the sport fishery for 2008 will be available in late fall of 2009. Comparisons of the 2008 recreational fishery harvest with recent years indicate that the preliminary harvest of 38,371 fish is 55% below the recent five-year average and 49% below the recent ten-year average. The freshwater recreational fishery for Chinook salmon 20 inches or greater in length in the Situk River near Yakutat was set to catch and release only during the 2008 season due to low projected escapement levels for that system.

Due to the extremely low preseason abundance index generated for the SEAK AABM fishery in spring 2008 (and resulting low all-gear quota), severe harvest restrictions were implemented on the sport fishery in an effort to keep harvests below the harvest ceiling as directed by the SEAK King Salmon Management Plan. Management measures resulted in Treaty harvests near zero after July 15th due to a 48 inch minimum size restriction invoked on non-resident anglers. Also during 2008, genetic samples were collected from 2,925 large Chinook salmon (28 inches or greater in Total Length), 91 genetic samples from small Chinook salmon (under 28 inches in TL) in Terminal Harvest Areas (THAs), and 346 genetic samples were collected from small Chinook salmon harvested outside of THAs.

SOUTHEAST ALASKA COHO SALMON FISHERIES

Attachment B of the June 30, 1999 U.S.-Canada Agreement relating to the Pacific Salmon Treaty specifies provisions for inseason conservation and information sharing for northern boundary coho salmon. In 2007, troll CPUE in Area 6 in the early weeks of the fishery averaged 27.2, which is above the highest boundary area conservation trigger of 22. The mid-July projection of region-wide total commercial harvest was greater than the 1.12 million trigger for an early region-wide troll closure, specified in Alaska Board of Fisheries regulation and the PST conservation agreement.

The 2008 all-gear catch of coho salmon totaled 2.25 million fish of which 2.05 million (91%) were taken in commercial fisheries (Table 15). The troll catch of 1.29 million fish was well below the 10-year average of 1.61 million fish and accounted for 63% of the commercial catch. Average weekly power troll CPUE averaged 21% lower than the 10-year average. Overall region wild stock abundance appeared slightly below the 10-year average. The average dressed weight of 7.4 lbs. for fish landed by power trollers was 10% above average and was the 4th largest average weight in the past 34 years. While the harvest of coho salmon in seine fisheries (225,800 fish) was only 62% of the 10-year average, the drift gillnet harvest of 377,500 fish was 110% of the 10-year average. Runs were relatively strong in the Yakutat area and the set gillnet harvest of 153,700 fish was near the 10-year average. A very preliminary estimate of the Southeast Alaska sport catch of 200,600 fish was only 71% of the 10-year average.

Wild production accounted for 1.66 million fish (81%) in the commercial catch compared with a recent 10-year average of 1.98 million fish (80%). Of the estimated hatchery contribution of 393,000 fish, over 99% originated from facilities in Southeast Alaska. Marine survival rates were near average for most indicator systems. Moderate exploitation rates resulted in escapements that were within or above goal throughout the region. Combined peak spawner counts in the Ketchikan area reached a record 19,042 spawners for the 14 streams in the index, far above the goal of 4,250-8,500 spawners. The high aggregate escapement index was influenced by extremely high counts in two streams in eastern Behm Canal, the Blossom River (7,100 spawners) and Humpback Creek (2,600 spawners). The total escapement of 1,741 spawners to Hugh Smith Lake ranked 7th highest in 27 years and was above the recently revised biological goal range (500-1,600 spawners).

Exploitation rate estimates for indicator stocks were mostly below-average while troll fishery exploitation rates were all well below-average. The troll fishery exploitation rate of only 19% for the Hugh Smith Lake stock was the second lowest rate on record and well below the 1982-2007 average of 37%. However, drift gillnetters accounted for an exploitation rate on the stock of about 22%, one of the highest rates on record for that gear group. Returning adults were large and mature-appearing. Much of the Hugh Smith Lake run departed outer coastal waters and entered the Tree Point gillnet fishery and the spawning stream earlier than usual which may have accounted for the below-average exploitation rate and a larger harvest by gillnet fisheries compared with hook-and-line fisheries. The all-gear exploitation rate on the stock (52%) was well below the 1982-2007 average of 65%.

The 2008 region-wide summer troll coho fishery began on July 1 and ended on September 20, with a mid-season closure from August 11-15. A season extension to September 30 was not implemented because of below-average abundance throughout most of the region.

Table 15 . Coho salmon harvest in Southeast Alaska in 2008 by gear type (preliminary).

Gear Type	Harvest
Troll	1,293,000
Purse Seine	225,800
Drift Gillnet	377,500
Set Gillnet	153,700
Sport (marine and freshwater)	200,600
Total	2,250,600

PRELIMINARY 2008 CHINOOK AND COHO SALMON CATCHES
IN WASHINGTON AND OREGON FISHERIES

Introduction

The 2008 season was conducted under the renewed Annex IV arrangements of the Pacific Salmon Treaty. This report covers the fisheries that occur between Cape Falcon and the U.S./Canadian border. These fisheries are subject to the Chinook Individual Stock Based Management (ISBM) obligations contained within the 1999 Agreement and the Southern Coho Management Plan adopted in 2002.

Descriptions of the preseason planning process, various regional fisheries, their general management constraints, and preliminary estimates of landed catch are listed in the following subsections. Tables 1 and 2 contrast preseason projections of catches with the preliminary estimates of landed catch for Chinook and coho in the various 2008 fisheries of interest to the Pacific Salmon Commission. For historical perspective, catches for those fisheries since 1998 are also presented. Complete 2008 fishery catch reports (e.g., Puget Sound recreational catch estimates) and preliminary estimates of spawning escapements are not available at this time.

Preseason Planning

Southern U.S. regional management coordination occurs within the preseason Pacific Fisheries Management Council process commonly referred to as "North of Falcon". Within this process, participants evaluate the biological and social/economic consequences of options for the outside (ocean) and inside (marine and freshwater) fisheries. The final product is a total fishery package that achieves both domestic and Pacific Salmon Treaty obligations evaluated by analysis of pre-season stock-specific abundance estimates and the expected performance of fisheries.

Chinook Salmon Management:

Under the 1999 Pacific Salmon Treaty Agreement, Council fisheries are subject to the Individual Stock Based Management provisions of Annex IV, Chapter 3. These provisions require the adult equivalent harvest rate by all U.S. fisheries south of the U.S./Canada border to be reduced by 40% from the 1979-1982 base period for Chinook stocks failing to achieve escapements at or above established escapement goals. Fishing levels and patterns were defined to meet provisions of the U.S. Endangered Species Act (ESA) for threatened and endangered Chinook salmon stocks originating from Puget Sound and the Columbia River. The 2008 U.S. ocean fishery seasons in the area north of Cape Falcon, Oregon, were constrained primarily by the need to meet management objectives for the ESA listed lower Columbia River natural tule fall Chinook stocks. Puget Sound fisheries were constrained by the need to meet management objectives for ESA listed Puget Sound Chinook, including Stillaguamish River Chinook.

Coho Salmon Management:

All U.S. natural spawning coho management units defined by the Southern Coho Management Plan were forecasted to be in low or moderate status, so exploitation rate caps for U.S. fisheries on U.S. management units constrained southern U.S. mix-stock fisheries. Seasons and quota levels for U.S. ocean fisheries were constrained primarily by the management objectives of ESA listed lower Columbia River natural coho. As with seasons since 2003, the Interior Fraser management unit was a key stock of concern with an exploitation rate cap of 10% for the southern U.S. fisheries.

North of Cape Falcon Ocean Fisheries

Chinook fisheries in this area are managed to meet objectives for ESA listed stocks, depressed Columbia River natural stocks and brood stock needs for hatchery fall Chinook. Within these constraints, ocean fishing seasons are defined that meet legal requirements of Indian fishing treaties and allocations between non-Indian commercial and recreational fisheries. Ocean fishery seasons are also constructed to ensure a balance of opportunity for harvest with inside (marine and freshwater) fisheries. Lower Columbia River and Bonneville Pool hatchery fall Chinook have historically been the major stocks contributing to catches of ocean fisheries in the North of Cape Falcon area.

Chinook and coho salmon catch quotas were defined for the 2008 ocean Treaty Indian, Non-Treaty commercial and recreational fisheries. Quotas for Chinook salmon were defined principally by management objectives for ESA-listed lower Columbia River natural tule fall Chinook stocks. Quotas for coho salmon in 2008 were defined principally by management objectives of lower Columbia River wild coho.

Non-Treaty Troll Fishery

Pre-season non-Tribal troll had quota levels of 20,000 Chinook and 4,000 coho (with healed ad-clip); the coho quota was reduced in-season to 3,000 following a transfer to the Area 1 recreational fishery. The preliminary estimates of non-Tribal harvest in the 2008 North of Falcon troll fishery are 14,024 Chinook, (70% of the quota), and 2,071 coho (69% of the revised quota). Trollers harvested 11,114 Chinook in the May 1 - June 30 Chinook-only fishery and the remaining 2,910 Chinook were harvested in the all-species fishery between July 1 and September 16. The coho catch represents harvest in a mark-selective fishery (healed adipose fin-clips).

Recreational Fisheries

Pre-season quotas for the recreational fishery were 20,000 Chinook and 24,350 coho (with healed ad-clip), including 4,000 marked coho allocated to an Area 4B add-on fishery. Total catches for the ocean recreational fisheries north of Cape Falcon were 15,541 Chinook (78% of the coastwide quota) and 20,932 coho (86% of the coastwide quota). A description of the resulting season structure and catches by management area follows.

Columbia River Ocean Area (including Oregon)

Ocean Area 1 (Columbia Ocean Area) opened for recreational Chinook-only fishing on Sunday, June 1 on a preseason guideline of 5,300 Chinook. The fishery closed on its automatic closure date, June 28. The total catch is estimated at 344 Chinook (6% of the guideline). Recreational all-species salmon fishing opened in the area on Sunday, June 29 with a quota of 10,180 marked coho (revised inseason to 11,380 following a transfer from the non-Treaty troll fishery) and the remainder of the 5,300 Chinook guideline from the Chinook-only fishery. The fishery closed on August 17 upon attainment of the coho quota. The catch estimates for Area 1 during the all-species fishery are 3,341 Chinook (67%) and 10,845 coho (95% of the revised quota). The Chinook minimum size limit was 24 inches, with a sub-area closure in the Columbia Control Zone.

Westport

Ocean Area 2 (Westport) opened for recreational Chinook-only fishing on Sunday, June 1 on a preseason quota of 8,200 Chinook total for Ocean Areas 2 – 4 (Leadbetter Point to U.S./Canada border). The fishery closed on its automatic closure date, June 28. The catch in Area 2 is estimated at 1,113 Chinook, and the total catch in Areas 2 – 4 is estimated at 1,498 (18% of the quota). Recreational all-species salmon fishing opened on Sunday, June 29 with a quota of 7,520 marked coho and a pre-season guideline of 5,100 Chinook (increased to 10,270 following rollover of remaining quota from the Chinook-only fishery). The fishery closed on its automatic closure date, September 13. The catch estimates for Area 2 during the all-species fishery are 8,637 Chinook (84% of the revised quota) and 7,485 coho (100% of the quota). The Chinook minimum size limit was 24 inches. Grays Harbor Control Zone was closed beginning August 1.

La Push

Ocean Area 3 (La Push) opened for recreational Chinook-only fishing on Sunday, June 1 on a preseason quota of 8,200 Chinook total for Ocean Areas 2 – 4 (Leadbetter Point to U.S./Canada border). The fishery closed on its automatic closure date, June 28. The catch in Area 3 is estimated at 80 Chinook, and the total catch in Areas 2 – 4 is estimated at 1,498 (18% of the quota). All-species recreational salmon fishing opened in the Area on Tuesday, July 1 with a quota of 590 coho and a pre-season guideline of 450 Chinook (increased to 495 following rollover of remaining quota from the Chinook-only fishery). The fishery closed on its automatic closure date, September 13, and reopened September 20 through October 5. The catch estimates for Area 3 during the all-species fishery are 657 Chinook (9% over the revised quota) and 542 coho (92% of the quota). The Chinook minimum size limit was 24 inches.

Neah Bay

Ocean Area 4 (Neah Bay) opened for recreational Chinook-only fishing on Sunday, June 1 on a preseason quota of 8,200 Chinook total for Ocean Areas 2 – 4 (Leadbetter Point to U.S./Canada border). The fishery closed on its automatic closure date, June 28. The catch in Area 4 is estimated at 305 Chinook, and the total catch in Areas 2 – 4 is estimated at 1,498 (18% of the quota). All-species recreational salmon fishing opened in the Area on Tuesday, July 1 with a quota of 6,060 marked coho (including 4,000 allocated to an Area 4B add-on fishery to open upon attainment of the ocean quota of 2,060) and a pre-season guideline of 950 Chinook (increased to 1,435 following rollover of remaining quota from the Chinook-only fishery). The fishery closed on August 25 upon attainment of the ocean coho quota of 2,060 and reopened in Area 4B only on August 26 operating under the quota of 4,000 marked coho. The Area 4B add-on fishery closed on its automatic closure date, September 13. The catch estimates for Area 4 during the all-species ocean fishery and the Chinook non-retention 4B add-on fishery are 1,075 Chinook (75%) and 2,191 coho (36% of the quota). The Chinook minimum size limit was 24 inches.

Treaty Troll Fishery

The Treaty troll fishery was constrained by a Chinook quota of 37,500 and a coho quota of 20,000. The season was comprised of a May/June Chinook directed fishery and a July 1 through September 15 all species fishery. The season concluded with a catch of 21,100 Chinook (56% of the quota) and 14,400 coho (72% of the quota).

Washington Coastal Terminal Fisheries

North Washington Coastal Rivers

Net and sport fisheries directed at salmon in this region were implemented based upon pre-season, Tribal-State agreements and subject to in-season adjustment. The north coastal rivers net harvest (all by Tribal fisheries) includes catch for the Quillayute, Hoh, Queets, and Quinault rivers. The 2008 commercial net fisheries in north coastal rivers have harvested an estimated 3,800 Chinook and 24,700 coho. Recreational fishery harvest estimates are unavailable at this time.

Grays Harbor

Net and sport fisheries directed at salmon in Grays Harbor are implemented based upon pre-season, Tribal-State agreements and subject to in-season adjustment. Harvest for Grays Harbor includes catch from both the Humptulips and Chehalis rivers. The 2008 Tribal net fisheries have harvested an estimated 1,300 Chinook salmon and 7,800 coho salmon. Non-Indian commercial fisheries have harvested 566 Chinook salmon and 7,770 coho salmon. Recreational fishery harvest estimates are unavailable at this time.

Columbia River Fisheries

Treaty-Indian and non-Indian commercial and sport fisheries for Chinook and coho in 2008 occurred during the winter/spring (February-June 15), summer (June 16-July) and fall (August-October) periods. All fisheries were constrained by impacts on ESA-listed stocks. Winter/spring fisheries were primarily constrained by impacts on ESA-listed upper Columbia River, Snake River spring/summer Chinook and wild winter steelhead. Summer

fisheries were constrained by impacts to ESA-listed Snake River sockeye and wild Snake River steelhead. Fall fisheries were constrained by impacts to ESA-listed wild Snake River and wild Lewis River bright fall Chinook.

Winter-Spring Fisheries

Non-Indian Commercial

Winter sturgeon fisheries were conducted during January 8 through February 29. A total of 14 fin-clipped Chinook were landed. The non-Indian winter/spring salmon fishery was conducted as a mark-selective fishery using tangle nets (4 ¼ inch mesh) during April 1, April 8 and April 15. A total of 5,529 adipose fin-clipped Chinook were harvested in mainstem fisheries. Select Area Fisheries (SAFE) also occurred outside of the mainstem Columbia River. SAFE harvest includes fin-clipped and non fin-clipped Chinook and totaled 3,469 fish.

Recreational

The 2008 mainstem recreational fishery operated under mark-selective fishery regulations. In the area below Bonneville Dam, nearly 103,000 angler trips resulted in 20,040 adipose fin-clipped Chinook being landed. The fishery below Bonneville Dam was open January 1 - April 20 with specific area and time restrictions in place. The majority of the catch occurred during April. Mark-selective recreational fisheries also occurred in the area from Bonneville Dam upstream to the Highway 395 Bridge (near Pasco, Washington), in the Snake River and on the bank of the mainstem Columbia River near the Ringold Hatchery. Harvest from these fisheries totaled 1800, 500 and 25 respectively. Recreational fisheries are also conducted in the Select Area (SAFE) sites. 2008 harvest is estimated at 200 Chinook. SAFE harvest includes fin-clipped Chinook.

Treaty Indian

No spring Chinook were harvested in the commercial winter season surgeon fishery (February through March 21). Ceremonial and subsistence (C&S) fisheries harvested 6,867 spring Chinook. The spring commercial season consisted of one 3½-day period during May 5-8. Harvest is estimated at 12,100 Chinook. An additional 1,500 Chinook were landed from mainstem platform/hook and line fisheries. All harvest includes fin-clipped and non fin-clipped Chinook.

Summer Fisheries

Non-Indian Commercial

Three 10- hour fishing periods occurred during June 24 through July 8. A total of 1,280 Chinook were harvested. In addition, one 6-hour sockeye directed fishery occurred on June 30 in the 2S area (Sandy River upstream to Beacon Rock). Landings included 213 sockeye two Chinook jacks. Select Area Fisheries (SAFE) also occurred outside of the mainstem Columbia River and harvest totaled 1,017 fish. Mainstem and SAFE harvest includes fin-clipped and non fin-clipped Chinook.

Recreational

The summer season below Bonneville Dam consisted of an eight-day fishery during June 21-28. An estimated 30,500 angler trips resulted in 2,050 kept Chinook. The area from Bonneville Dam upstream to Priest Rapids Dam was open during June 16 through July 1 with a catch estimate of 800 Chinook. Recreational fisheries were also conducted in the Select Area (SAFE) sites. 2008 harvest is expected to be minimal, likely less than 50 Chinook. Mainstem and SAFE harvest includes fin-clipped and non fin-clipped Chinook.

Treaty Indian

Six weekly (2.5 days to 3.5 days) commercial fishing periods were conducted during June 23 through July 31. Harvest totaled 8,400 Chinook. Platform/ hook & line fisheries also occurred throughout the summer season in the mainstem Columbia River. Harvest from these fisheries account for an additional 700 Chinook. All harvest

includes fin-clipped and non fin-clipped Chinook.

Fall Fisheries

Non-Indian Commercial

Early fall mainstem fisheries consisted of seven fishing periods during the month of August. Preliminary harvest estimates total 14,400 Chinook and 78 coho. Late fall mainstem fisheries consisted of 23 fishing periods during September 18 through October 31. The majority of the season occurred above the mouth of the Lewis River (Zones 4-5) to protect ESA listed Chinook and coho. Preliminary harvest estimates total 13,662 Chinook and 13,029 coho. Select Area Fisheries (SAFE) also occurred outside of the mainstem Columbia River throughout the fall season. Harvest from Select Areas totaled 3,469 Chinook. Mainstem and SAFE harvest includes fin-clipped and non fin-clipped Chinook.

Recreational

The 2008 Buoy 10 fishery (from the mouth upstream to the Tongue Point/Rocky Point line) was open for Chinook retention during August 1 – 24 and open for adipose fin-clipped coho retention during August 1-31. Preliminary harvest estimates total 8,275 Chinook and 6,055 adipose fin-clipped coho from 28,700 angler trips. The mainstem Columbia River (from the Tongue Point/Rocky Point line upstream to Hwy 395 Bridge at Pasco) opened for Chinook and coho on August 1. Non-adipose fin-clipped coho were released downstream from Hood River Bridge. In the lower Columbia River (downstream of Bonneville Dam) Chinook retention was allowed only during September 1-16 and with sanctuaries in place to protect ESA listed Chinook. The fishery re-opened to Chinook retention September 20 as a result of run size upgrades. Preliminary harvest estimates below Bonneville Dam total 11,930 Chinook and 1,000 adipose fin-clipped coho from 80,000 angler trips. The fishery will remain open through December for Chinook and adipose fin clipped coho retention. Recreational fisheries are also conducted in the Select Area (SAFE) sites. 2008 harvest is estimated at 100 Chinook. Recreational fisheries occurring between Bonneville Dam and the Hwy 395 Bridge are estimated to have kept 1,660 Chinook and an additional 4,630 Chinook were kept from the Hanford reach fishery. For the first time in 20 years a fishery occurred in the Snake River. This fishery was took place between September 25 and October 15. The Snake River fishery only allowed the retention of adipose fin clipped Chinook. Landing estimates from the Snake River fishery are estimated at less than 500 fish.

Treaty Indian

The subsistence fishery began August 1 and runs through the end of the year. The commercial fishery consisted of weekly fishing periods during August 19 through October 23. Preliminary catch data indicate 114,380 Chinook and 17,000 coho were harvested, including commercial, ceremonial and subsistence catches. Harvest includes fin-clipped and non fin-clipped Chinook and coho.

Puget Sound Fisheries

Puget Sound marine fisheries of interest to the Pacific Salmon Commission in 2008 were regulated to meet conservation and allocation objectives for Chinook, coho, chum and sockeye salmon stocks, per Tribal-State agreement. For Puget Sound Chinook listed under the ESA, fisheries were managed according to the State and Tribal joint resource management plan, the Puget Sound Chinook Harvest Management Plan. This management plan defines limits to total exploitation rates for natural stocks and was determined by the National Marine Fisheries Service to be consistent with requirements specified under the ESA 4(d) Rule.

Release requirements were applied to many recreational and commercial fisheries for Chinook, coho and chum salmon, the latter to protect ESA-listed Hood Canal and Strait of Juan de Fuca summer chum.

Puget Sound fisheries were constrained by the need to meet management objectives for ESA listed Puget Sound Chinook, including Stillaguamish River Chinook. For the 2008 season, the low status of the Interior Fraser River and Hood Canal coho management units represented the primary coho stocks of concern.

Strait of Juan de Fuca Recreational

Areas 5 and 6 were open to Chinook retention (non-selective) from February 16 through April 10. Recreational fishing regulations allowed retention of Chinook or coho with no adipose fin beginning July 1 in the Strait of Juan de Fuca (Areas 5 & 6). The Chinook selective fishery began on July 1 and continued through August 9 without a quota. Additional sub-areas were also closed, with the intention of providing protection of local Chinook stocks. The fishery continued through September 30 with Chinook non-retention. A coho mark selective fishery occurred from July 1 to September 15 in Areas 5 and from July 1 to September 30 in Area 6. From September 16 to 31 retention of wild coho was legal in Area 5. Chinook retention was legal in Area 5 from November 1 through November 30, and Area 6 from October 1 through October 30 with a 2 fish daily limit, including not more than one Chinook salmon.

Area 5 recreational catch for the creel survey period of July 1 through September 15 totaled 2,634 Chinook (July 1-August 9) and 6,328 coho. Catch record card estimates for salmon taken at times other than noted above are not yet available.

Strait of Juan de Fuca Treaty Troll (Area 4B, 5, and 6C)

The preliminary estimates of the 2008 Strait of Juan de Fuca Treaty troll fishery are 1,664 Chinook and 94 coho. The Tribal catch estimates from this area do not include catches from Area 4B during the May-September PFMC management period, which have been included in the North of Cape Falcon troll summary.

Strait of Juan de Fuca Net

Preliminary estimates of the 2008 catch in Strait of Juan de Fuca Tribal net fisheries are 4,500 Chinook and 600 coho salmon. The Chinook catches exceeded the preseason expectation of 800 Chinook. The coho catches were less than the preseason expectation of 4,600 coho.

San Juan Islands Net (Areas 6, 7, and 7A)

Preliminary estimates of the 2008 catch in San Juan Island net fishery directed at sockeye or chum salmon totaled 29 Chinook and 278 coho salmon for the non-Indian fishery, compared with pre-season expected landings of 1,300 Chinook and 1,300 coho. Tribal fishery landings from this area totaled 55 Chinook and 86 coho compared with pre-season expected landings of 4,700 Chinook and 8,300 coho.

San Juan Islands Recreational

Chinook retention was allowed in the entire area for the period February 1 – April 15 but mark-selective only during the month of February.

The southern and southeastern (Rosario Strait) portions of this catch area were again closed in 2008 to protect migrating, mature Puget Sound Chinook salmon. The remaining area was opened for retention of Chinook and coho salmon from July 1 to October 31. Release of unmarked coho salmon was required for the months of August and September. The month of October was opened for Chinook. Additional sub area closures are described in the Washington State Sport Fishing Rules Pamphlet. Catch estimates for this area are not available at this time.

Inside Puget Sound (Areas 8-13) Recreational

Catch and angler effort estimates are available for mark-selective recreational fisheries directed at hatchery Chinook in Areas 8.1 & 8.2, 9, and 10 during the winter period, and summer period fisheries conducted in Areas 9, 10, 11 and 13. Detailed reports of the conduct of these fisheries, including catch, effort and results of sampling and monitoring programs, are available from the Washington Department of Fish and Wildlife.

Puget Sound Marine Net (Areas 8-13)

To achieve conservation objectives for Puget Sound Chinook and coho, very limited commercial fishing opportunities directed at abundant returns of hatchery Chinook and both hatchery and natural returns of coho were planned for 2008.

Puget Sound Terminal Fisheries

Tribal net and sport fisheries directed at salmon in this region were implemented based upon pre-season, Tribal-State agreements and subject to in-season adjustment. The Puget Sound rivers net harvest (all by Tribal fisheries) includes catch from river systems in the Strait of Juan de Fuca, Hood Canal, and Puget Sound.

Table 1. Preliminary 2008 landed Chinook catches for Washington and Oregon fisheries of interest to the Pacific Salmon Commission (nearest 100).

Fisheries	2008 Preseason Total Mortality	2008 Preseason Landed 2/	2008 Preliminary Landed	2007	2006	2005	2004	2003	2002	2001	2000	1999
Ocean Fisheries												
Troll (see text for quota information)												
C Flattery&Quillayute (Areas 3/4/4B) 3/	51,800	44,600	23,300	28,300	41,900	57,500	73,400	72,400	61,400	35,700	16,200	40,500
Columbia. R & Grays Harbor (Areas 1&2)	17,300	12,900	11,800	10,400	15,400	19,600	11,700	19,000	32,300	14,300	1,700	4,400
Sport (see text for quota information)												
Neah Bay (4) 4/	1,700	1,500	1,400	1,500	1,400	2,800	5,500	4,700	5,200	1,500	400	
La Push (Area 3)	800	700	700	600	1,700	1,700	1,800	1,900	2,000	600	200	1,000
Grays Harbor/ Westport (Area 2)	13,900	12,500	8,600	5,200	5,800	22,400	11,300	21,800	42,600	15,700	6,300	6,600
Col. R./Ilwaco (Leadbetter Pt. to Cape Falcon)	5,900	5,300	3,300	2,200	2,300	9,600	6,200	5,800	8,000	5,100	1,500	2,300
Inside Fisheries												
Sport												
Juan de Fuca (Area 5&6) 5/	7,400	4,000	2,600	6,900	5,300	2,400	5,000	5,000	2,900	4,300	1,300	1,400
San Juan Is. (Area 7) 8/	4,500	2,500	Na	5,000	3,300	2,100	2,300	3,300	5,500	6,600	3,400	2,700
Puget Sound (Areas 8-13) 8/	54,300	27,800	Na	38,500	20,900	18,200	19,900	22,500	22,300	33,500	18,900	21,800
Puget Sound Rivers	11,900	11,500	Na	19,800	17,200	12,200	5,800	10,900	13,600	11,800	5,000	8,600
North WA Coastal Rivers	na	na	Na	400	400(1)	400(1)	800(1)	800(1)	800(1)	1,000	700	0
Grays Harbor (Areas 2A-2D)	na	na	Na	700	1,100(1)	400(1)	6,300(1)	1,300(1)	3,600(1)	3,800	2,300	100
Columbia River Sport 6/ - Spring	na	na	21,800	9,700	13,000	13,600	26,700	20,800	23,800	25,800	300	0
Columbia&Trib Sport / - Summer/Fall	na	na	29,400	19,000	23,200	38,100	43,900	52,300	50,700	28,600	17,700	30,500
Commercial												
North WA Coastal Rivers	na	na	3,800	5,500	13,900	16,000	23,000	11,400	14,500	8,000	5,300	8,300
Grays Harbor (Areas 2A-2D) 7/	na	na	1,900	3000	3,700	2,600	3,600	900	1,500	6,100	4,700	2,000
Columbia River Net- Winter/Spr 9/	na	na	26,000	9,800	12,800	11,400	30,700	23,300	47,900	60,100	11,300	2,000
Columbia River Net – Sum/Fall 9/	na	na	123,500	4,200	92,600	121,100	136,000	127,900	131,800	104,600	52,300	84,800
Strait of Juan de Fuca(4B winter ,5/6C)	10,800	9,000	6,181	4,400	1,900	5,500	21,200	1,200	2,800	2,500	800	1,100
Net&Troll												
San Juan Islands (Areas 6, 7 & 7A)	6,100	5,000	100	12,100	4,400	4,400	5,100	4,800	1,900	1,000	1,000	0

Table 1. Preliminary 2008 landed CHINOOK catches for Washington and Oregon fisheries of interest to the Pacific Salmon Commission.

Footnotes:

1/ Preliminary data. Estimates represent landed catch only and do not include non-retention mortality.

2/ This column shows the 2008 Chinook troll quotas (Non-Treaty troll quota 20,000 and Treaty troll quota of 37,500) as distributed by ocean area; the Recreational Chinook quota 20,000 is also shown as distributed by area specific guidelines.

3/ Includes Area 4B catch during the PFMC management period (May 1 - September 30); Area 4B Treaty troll catch outside PFMC period included under Strait De Fuca Net and Troll. .

4/ Includes Area 4B catch

5/ 2008 catches represents July 1 through September 15 in Area 5 only, since CRC annual estimates are not yet available. Data after March of 2003 are still preliminary.

6/ Mainstem only (mouth upstream to Hwy 395 Bridge for spring and mouth upstream to Priest Rapids Dam for summer and fall).

7/ Includes catch from the upper Chehalis (River+2A+2D) and Humptulips (River+2C). .

8/ Data after March of 2003 are still preliminary.

9/ Mainstem retained catch only

Table 2. Preliminary 2008 landed Coho catches for Washington and Oregon fisheries of interest to the Pacific Salmon Commission.

Fisheries	2008 Preseason Total Mortality	2008 Pre-season Landed /2	2008 Preliminary Landed	2007	2006	2005	2004	2003	2002	2001	2000	1999
Ocean Fisheries												
Troll												
Cape Flattery & Quillayute (Areas 3/4) 3/	22,600	20,300	14,200	40,100	32,500	24,100	62,700	11,800	17,900	58,800	21,800	33,800
Columbia R & Grays Harbor (Area 2)	6,300	3,800	2,300	17,300	1,800	1,700	7,900	4,700	200	7,400	5,900	700
Sport												
Neah Bay (Area 4) 3/	7,700	6,100	2,200	10,600	5,800	10,200	29,400	19,700	8,400	17,900	11,600	5,400
LaPush (Area 3)	800	600	500	2,800	1,900	2,300	3,200	3,400	1,700	3,300	1,900	2,600
Grays Harbor (Area 2)	9,600	7,500	7,500	23,000	8,800	10,500	29,300	39,300	19,100	69,400	28,800	12,600
Col. R. (Leadbetter Pt. to Cape Falcon)	12,200	10,200 7/	10,800	65,800	24,900	28,700	51,000	76,700	45,000	77,500	25,800	19,600
Inside Fisheries												
Sport												
Juan de Fuca (Areas 5 & 6) 4/	28,600	12,900ok	6,300	44,000	12,600	30,700	47,300	50,800	33,700	71,000	32,600	8,700
San Juan Islands (7) 6/	2,400	2,100	na	600	100	1,000	1,500	2,000	3,300	4,900	2,600	500
Puget Sound Sport (Areas 8-13) 6/	32,700	27,200	na	32,800	17,000	30,400	39,300	48,000	29,500	117,600	39,700	12,800
Puget Sound Rivers 6/	24,800	23,600	na	31,700	13,500	32,000	34,200	47,500	35,500	66,800	20,000	11,500
North WA Coastal Rivers	3,700	3,500	na	580(1)	700(1)	1,500(1)	1,600(1)	1,100(1)	1,500(1)	2,000	900	0
Grays Harbor (Areas 2A-2D)	4,900	4,700	na	700(1)	1,400(1)	3,300(1)	10,400(1)	12,600(1)	15,400(1)	21,700	6,900	900
Columbia River Buoy 10	4,700	4,000	6,100	8,400	3,700	6,900	15,200	54,400	6,200	132,000	21,500	9,000
Commercial												
North WA Coastal Rivers	31,700	31,100	24,700	26,900	30,800	98,400	54,100	57,300	80,100	73,300	30,100	45,500
Grays Harbor (Areas 2A-2D) 5/	20,800	20,400	15,600	11,800	9,600	29,200	24,400	16,500	21,900	14,200	16,700	14,600
Strait of Juan de Fuca (Areas 4B winter, 5/6C) Net&Troll	4,600	4,500	718	5,800	2,700	8,100	8,100	2,800	6,900	5,300	2,500	1,400
San Juan islands (Areas 6, 7 & 7A)	9,600	8,800	400	5,900	800	22,900	22,900	9,000	3,700	700	1,600	0

Table 2. Preliminary 2008 landed COHO catches for Washington and Oregon fisheries of interest to the Pacific Salmon Commission.

Footnotes:

1/ Preliminary data. Estimates represent landed catch only and do not include non-retention mortality. 2/ This column shows the 2008 coho troll quotas (Non-Treaty troll marked coho quota 3,000 (after in-season reduction) and Treaty troll quota of 20,000) as distributed by ocean area. Recreational marked coho quotas are as shown.

3/ Excludes Area 4B catch outside the PFMC management period (Oct 1 - Apr 30).

4/ 2008 catch represents selective fisheries July 1 through September 15 in Area 5 only, since CRC annual estimates are not yet available. Data after March 2003 are preliminary.

5/ Includes catch from the upper Chehalis and Humptulips Rivers.

6/ Data after March 2003 are preliminary.

7/ Quota adjusted to 11,380 in-season.

PRELIMINARY REVIEW OF THE 2008 WASHINGTON CHUM FISHERIES OF INTEREST TO THE PACIFIC SALMON COMMISSION

November 17, 2008

This summary report provides a preliminary review of the 2008 chum fishing season and is subject to correction and revision as additional information becomes available. Washington chum fisheries, in a number of areas, particularly in Washington Areas 7 and 7A, are still underway and some fish ticket data from recent weeks may not be in the catch reporting system at this time. The harvest and abundance information provided are based on preliminary data reported through November 15. This summary report is limited to only those fisheries of concern, under the Annex IV, Chapter 6 of the Pacific Salmon Treaty. This includes mixed-stock fisheries in United States (U.S.) waters of the western Strait of Juan de Fuca (Areas 4B, 5 and 6C), the San Juan Islands (Area 7) and the Point Roberts area (Area 7A). Other chum fisheries in Washington waters are primarily terminal area fisheries targeting local stocks.

MIXED STOCK FISHERIES

Areas 4B, 5 and 6C

As in previous years, the chum fishery in Areas 4B, 5 and 6C was restricted to Treaty Indian fishers using gill nets. The fall chum fishery opened the week of October 5, with a schedule of five days per week. At the end of the first week, the fishery schedule expanded to seven days per week in order to provide further opportunity to the few participants and concluded on November 8.

Incidental catches of chum salmon, prior to the chum directed fishing season, were very limited in 2008, mostly because of the limited effort and open periods, during the passage of summer chum and the early portion of the fall run which overlaps the coho season. Only 266 summer chum, including those caught in test fisheries, were recorded through September 15. During the subsequent fishery, directed at coho salmon, an additional 384 chum salmon were caught. During the fall chum fishery, 4,207 chum were harvested from October 5, to the end of the season, resulting in an annual catch total, for this fishery, of 4,857 (Table 1).

Areas 7 and 7A

Chum fisheries in Areas 7 and 7A were regulated in compliance with the provisions of Chapter 6 of Annex IV of the Pacific Salmon Treaty. More specifically, this chapter calls for a flat exploitation rate limit on chum fisheries in Johnstone Strait, and specifies a fixed harvest ceiling in U.S. Areas 7 and 7A, unless a critically low level of abundance is identified for the runs returning through Johnstone Strait. The base harvest ceiling for the Areas 7 and 7A fishery, in 2008 was 130,000 chum plus 46,000 chum from an accumulated historical difference, plus 15,000 chum from a 2007 shortfall, below the base catch level, for a total target catch of 191,000 chum. Canada did not provide a preseason forecast, nor an in-season estimate of the total Inside chum abundance, but

indicated inseason, on the basis of Inside area test catches and fisheries, that the Inside area run size was not at a critical level. Chapter 6 of the Annex also specifies that chum fisheries in Areas 7 and 7A may not be initiated prior to October 10 and that, if the Fraser River chum run is updated inseason to levels lower than 900,000 fish, the U.S. would take actions to limit fishery impacts on Fraser chum. The initial in-season Fraser chum run size estimate exceeded 2 million, so this provision was not applicable to the 2008 management actions.

Non-Treaty reef net fisheries targeting marked coho salmon were conducted from the end of Fraser Panel control until October 9 and remained open, targeting chum salmon from October 10 through November 15. Chum salmon by-catch in this fishery, between October 1 and October 10, was 466 fish.

The Treaty Indian gillnet and purse seine fishery opened after the start of the fall chum management period, on October 11, and remained open until November 15. The Non-Treaty fleet opened for one day of combined gillnet and purse seine fishing on October 10.

For the week beginning October 12, the Non-Treaty fishing opened for a combined gillnet and purse seine fishery on October 15 and remained open until November 15.

Catches per vessel were low in the first weeks of the fishery, dropping off quickly in the latter part of the period. Effort remained relatively low throughout the fishery primarily because of the availability of alternate fishing opportunities in other Puget Sound areas, as well as because of intervening periods of inclement weather. In the last three weeks of the fishery, there was very little catch and effort. Chum prices have improved over the past several years, but this fishery did not reach its base catch ceiling in 2008.

There were no summer chum reported caught in Areas 7 and 7A prior to September 16. The total chum catch by all gears in Areas 6, 7, and 7A, reported through November 15, was 73,036. Catch distribution, between Areas 7 and 7A, was 68.5% and 31.5% respectively. However, it should be noted that these catch reports are likely incomplete (Table 2).

During the fall chum fisheries in Areas 7 and 7A, there was a reported bycatch of 219 coho salmon and 2 steelhead. The reported steelhead bycatch during the chum fishery in Areas 4B, 5, 6C was 52 steelhead.

Chum and coho tissue samples were collected for genetic analysis from this fishery in 2008.

PUGET SOUND TERMINAL AREA FISHERIES AND RUN STRENGTH

Preseason forecasts for chum returns to Puget Sound were for a moderate fall chum run totaling approximately 1.85 million fish. Current in-season estimates indicate that the returns to Hood Canal and Stillaguamish - Snohomish may be approximately as forecast and those to Skagit and South Puget Sound below forecast. Some Puget Sound chum fisheries are still underway and additional in-season estimates of abundance may occur. At this time, spawning escapements are underway and therefore estimates are not available.

TABLE 1. PRELIMINARY 2008 CHUM HARVEST REPORT FOR WASHINGTON CATCH REPORTING AREAS 4B, 5, 6C

Areas 4B, 5, 6C	
Treaty Indian, GN only	
Time Periods	GN
Through 9/15	266
9/16 – 10/4	384
10/5 – 10/11	197
10/12 – 10/18	442
10/19 – 10/25	2,344
10/26 – 11/1	1,014
11/2 – 11/8	210
11/9 – 11/15	0
Total	4,857

TABLE 2. PRELIMINARY 2008 CHUM HARVEST REPORT FOR WASHINGTON
CATCH REPORTING AREAS 6, 7, 7A

Time Periods	Area 6	Area 7				Area 7A			Area 6, 7, 7A
	GN	PS	GN	RN	Area total	PS	GN	Area total	Total
Through 9/15	0	0	0	0	0	0	0	0	0
9/16 – 10/4	0	0	0	30	30	0	0	0	30
10/5 – 10/11	0	2,746	315	436	3,497	2,886	125	3,011	6,508
10/12 – 10/18	129	13,223	792	0	14,015	2,130	4,209	6,339	20,483
10/19 – 10/25	93	27,441	2,359	0	29,800	3,988	7,526	11,514	41,407
10/26 – 11/1	0	1,786	592	0	2,378	0	1,429	1,429	3,807
11/2 – 11/8	0	0	158	0	158	0	643	643	801
11/9 – 11/15	0	0	0	0	0	0	0	0	0
Total	222	45,196	4,216	466	49,878	9,004	13,932	22,936	73,036
10/10 – 11/15 Period Bycatch		Coho: 219; Steelhead: 2							

Preliminary Review of 2008 United States Fraser River Sockeye and Pink Salmon Fisheries

Introduction

The 2008 Fraser River Panel season was the tenth implemented under the renewed Annex IV of the Pacific Salmon Treaty (PST). The treaty establishes a bilateral (U.S. and Canada) Fraser River Panel (Panel) that develops a pre-season management plan and approves in-season fisheries within Panel Area waters directed at sockeye and pink salmon bound for the Fraser River (Figure 1). In partial fulfillment of Article IV, paragraph 1 of the PST, this document provides a season review of the 2008 U.S. Fraser River salmon fisheries as authorized by the Panel. Catch and abundance information presented is considered preliminary.

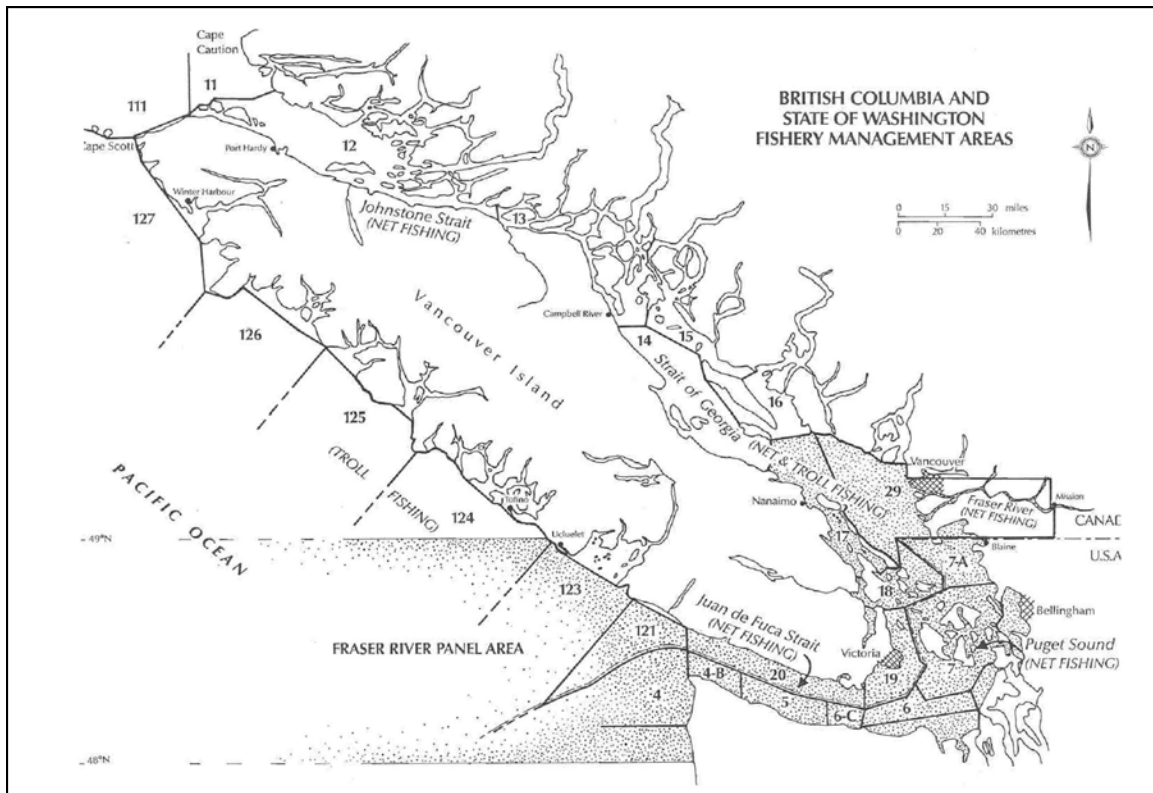


Figure 1. British Columbia and State of Washington Fishery Management Areas, 2008. The shaded area in the figure represents the marine waters managed by the Fraser River Panel.

Preseason Expectations and Plans

Forecasts and Escapement Goals

The Department of Fisheries and Oceans, Canada (DFO) provided the Panel pre-season run size forecasts and escapement goals by stock group (run) at various probability levels. Table 1 shows the 2008 pre-season sockeye forecasts at the 50 percent probability level, which represents the mid-point of the range of possible run sizes. These are the forecasts agreed upon by the Panel for use in pre-season fishery planning. Table 1 also provides the escapement goals for timing groups based on the pre-season forecasted abundance. The escapement goals for all timing groups can change in-season as the run size estimates change.

Table 1. 2008 Pre-season Fraser River Sockeye Forecasts and Escapement Goals, by Stock Group.

	Early Stuart	Early Summer	Summer	Late	Total
Forecast of Abundance	35,000	349,000	1,810,000	705,000	2,899,000
Escapement Goal	35,000	145,000	724,000	431,000	1,335,700

Diversion

Diversion is defined as the percentage of Fraser sockeye salmon migrating through Johnstone Strait (rather than the Strait of Juan de Fuca) in their approach to the Fraser River. Diversion through Johnstone Strait was forecasted pre-season to be 29% for sockeye. Diversion was modeled on a daily basis starting at 0% (100% migration through the Strait of Juan de Fuca) in late June and climbing to 40% in steady increments by early August.

Management Adjustment (MA) and Environmental Conditions

Management Adjustments reflect the expected difference between escapement estimates at Mission (minus catch above Mission) and actual spawning escapements. If the adjustments are adopted by the Panel, they are added to the gross escapement goal, effectively increasing the goal for an impacted run. For 2008, the Management Adjustment was modeled using discharge and temperature predictor variables and relationships between differences between estimates and run timing. Table 2 provides the preseason projected MA's that were used for planning fisheries. In-season management adjustments use MA models that are based on both measured and forecasted temperatures and discharges, and inseason estimates of run timing. A management adjustment was not used for the Late runs. Due to conservation concerns for some of the

Late Run stocks the management approach was to keep impacts limited to a fishery exploitation rate of no more than 20%.

Table 2. 2008 Pre-Season Management Adjustments

Early Stuart		Early Summer		Summer	
Difference Between Estimates	Management Adjustment	Difference Between Estimates	Management Adjustment	Difference Between Estimates	Management Adjustment
45%	31,000	20%	36,000	0%	0

Run Timing

Run timing is temporal information about the presence of a salmon stock in a specific area during the time the stock is migrating through that area. Run timing is an important variable when planning fisheries and predicting run size inseason. The following Area 20 50% dates (the dates when 50% of the stock or run group is forecasted to have passed through Area 20) were predicted pre-season for the major Fraser sockeye run groups. These run timing predictions were earlier than normal for all timing groups.

Table 3. 2008 Area 20 Pre-Season 50% Run Timing Dates

Run Group	Area 20 50% Run Timing Date
Early Stuart	June 30
Early Summers	July 22
Summers	July 30
Birkenhead	August 6
True Lates	August 7

U.S. Total Allowable Catch (TAC)

Pre-season, the U.S. TAC was established at 175,000 sockeye, but only about 153,000 were expected to be taken by the U.S. fisheries due to constraints on available harvest of Early Summer and Late run components, which substantially overlap in timing with the more abundant Summer runs.

Preseason Management Plans

During the preseason planning process the Fraser Panel evaluates and adopts management approaches for Fraser sockeye salmon that address conservation, and harvest objectives for each major stock group. The Fraser River Panel develops fishing plans and in-season decision rules with the objective to meet management goals. Managing Fraser River sockeye involves a trade-off between catching abundant stocks and meeting escapement objectives for less abundant stock groups.

In 2008 the Panel adopted a management plan that recognized that fishing opportunities would be constrained by Early Summer runs at the beginning of the season and Late-Run stocks later in the season. There was no TAC predicted to be available for Early Stuart sockeye in 2008, and commercial fisheries were not contemplated on this timing group.

The early entry behavior of Late Run sockeye, observed in recent years, which results in an apparent high loss of fish prior to reaching the spawning grounds, was expected to continue in 2008. A management approach was adopted preseason to allow for a Late Run fishery exploitation rate of only 20%.

The Panel developed a preseason fishing plan that balanced the competing objectives of maximizing the Summer run catch (which made up a large portion of the TAC, and had the highest allowable exploitation rate) and meeting the gross escapement goals for Early Summer runs and Late-Runs. For the major U.S. fisheries this meant that sockeye openings would likely be constrained to the last week of July and the first week of August, and an approximate preseason fishing schedule was developed for that window of opportunity. The total number of days of fishing in U.S. waters was expected to be relatively small given the predicted low diversion rate.

In-Season Management

In-season, the Pacific Salmon Commission staff analyzes a variety of information to produce best estimates of diversion, management adjustments, run-timing, abundance, and harvest by stock group. These estimates are created using stock ID information, test fishing data, counts of escapements past Mission, harvest data and environmental information.

Run Assessment

The final inseason abundance estimates for 2008 (Table 4) indicate that the Early Stuart and the Early Summer runs returned somewhat larger than expected preseason, while the Summer and Late run timing groups, which were expected to provide the bulk of the harvest, returned much lower than predicted.

These very poor returns relative to expectations for the Summer and Late run components are indicative of poor marine survival. These low returns provided very limited opportunities for commercial harvest.

Preseason, run timing was expected to be quite early for all timing groups and in-season timing proved to be even earlier than expected. In some cases, return timing was the earliest ever observed on this cycle.

Table 4. Comparison of Preseason vs. Inseason Abundance Estimates for Fraser River Sockeye Salmon by Stock Group (run).

Stock Group	PreSeason 50% Probability Forecast	InSeason Run Size Estimate	Comparison: InSeason vs. Pre-Season Forecast
Early Stuart	35,000	40,000	114%
Early Summer	349,000	450,000	114%
Summer	1,810,000	980,000	54%
Late	705,000	245,000	35%
Total	2,899,000	1,715,000	59%

Table 5. 2007 Preliminary 50% Run Timing Dates in Area 20

Run Group	Pre-season 50% Run Timing Date	In-season 50% Run Timing Date
Early Stuart	June 30	June 28
Early Summer	July 22	July 15
Summer	August 6	July 25
Late	August 7	July 31

Season Description

Week ending July 26:

At the beginning of the week the Early Stuart run appeared to have cleared the fishing areas and the Early Summer runs appeared to be returning earlier and larger than expected preseason. Relatively low impact U.S. treaty Indian fisheries commenced in areas 4B/5/6C on July 19, two days earlier than provided for in the preseason fishing plan. As the week progressed the runs still appeared to be returning earlier than expected and the Early Summer run size was formally updated by the Panel to 500,000 from the preseason forecast of 394,000 sockeye. The diversion rate was also very low, estimated throughout the week at between 5 and 10%. At the end of the week a Non-Treaty commercial fishery for purse seine and gillnet gear was opened in areas 7/7A. The opening of fisheries in areas 7/7A was 3 days earlier than expected in the preseason fishing plan.

Week ending August 2:

Treaty Indian fisheries in areas 4B/5/6C were open continuously until 6:00 PM on August 1st. Treaty Indian fisheries were opened in areas 6/7/7A on July 28th and ran nearly continuously through July 31st. Non-Treaty reef nets fished areas 7/7A on July 27th, and all Non-Treaty gear was open in areas 7/7A from July 29th through July 31st. Catches were generally very good in areas 4B/5/6C but much less than expected in areas

6/7/7A, largely due to a very heavy plankton bloom that fouled net gear, preventing effective fishing. As the week progressed it became apparent that the previous week's abundance estimate for the Early Summer runs was too high and the Panel lowered the run size estimate to 425,000 sockeye. Similar concerns were emerging for the Summer runs and the Panel adopted the 75p forecast of 1.18 million for management purposes. By the end of the week, more concerns emerged for the abundance of the Summer and Late runs and these run sizes were further reduced by the Panel to 800,000 for the Summer runs and 369,000 for the Late runs. With these run size estimates there was no U.S. allowable catch share remaining, and no U.S. fisheries were scheduled after August 1st.

Harvest

Between July 19 and August 1 the United States caught a total of 49,700 Fraser River sockeye in Panel area waters (Table 6)¹. During this period the Treaty Indian fisheries in Areas 4B/5/6C were open for a total of 14 days and in Areas 6/7/7A for 5 days. The Non-Indian fishery in Areas 7/7A was open for a total of 4 days for reef net, gillnet and purse seine gear. The number of days fished was similar to what was planned preseason, but the overall catches were much less than expected due to much smaller run sizes for the Summer and Late Run components, and a very large plankton bloom that affected gear efficiency in areas 7/7A.

Table 6. Preliminary estimates of 2008 U.S. catches of Fraser River sockeye salmon in Panel area waters.

	Treaty Indian	Non-Indian
C and S	1,400	0
Catch Areas 4B/5/6C	32,400	0
Catch Areas 6/7/7A	6,800	9,100
Total	40,600	9,100

¹ Catch data reported by PSC staff as of 9/22/08.